

Batoum Gardens, London, W6

£500,000 Share of Freehold

A charming top-floor, two bedroom apartment set within a Victorian building, ideally located in the heart of Brook Green.

Reception Room | Kitchen | 2 Bedrooms | Bathroom | 526.84 Sq Ft / 48.95 Sq M | Council Tax Band D | EPC Rating Band C

Winkworth

winkworth.co.uk

for every step...



LOCATION

Batoum Gardens occupies a prime position at the heart of Brook Green, a highly desirable enclave celebrated for its outstanding schools, independent boutiques, and green spaces. Proximity to transport links are excellent with the closest Underground station being Hammersmith and there are a number of bus routes nearby.

DESCRIPTION

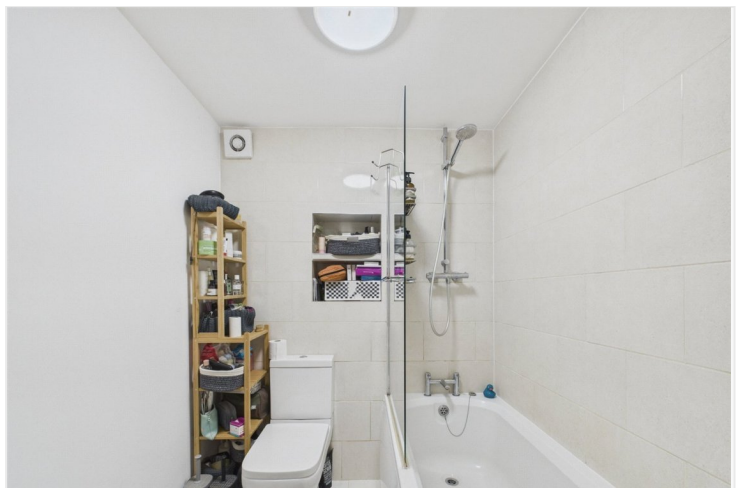
This well-proportioned top-floor apartment is presented in good order and features two bedrooms, a well-appointed bathroom, and a bright kitchen and living space.

Offered chain-free, the property also benefits from a share of the freehold and reasonable service charge costs.

Lease: 889 years remaining

Service Charge: £1,200 p.a

Ground Rent: N/A





LOCAL AUTHORITY
Hammersmith & Fulham

TENURE
Share of Freehold 889 years

PRICE: £500,000 Share of Freehold



Score	Energy rating	Current	Potential
92+	A		
81-91	B		
69-80	C	72 C	79 C
55-68	D		
39-54	E		
21-38	F		
1-20	G		



The displayed square footage is taken from the floor plans with measurements created using the Royal Institute of Chartered Surveyors' Code of Practice for Measuring. These measurements are approximate and included for illustrative purposes only. Winkworth does not make any representation as to the accuracy of these measurements and you should seek to verify them for yourself. Winkworth accept no liability for any loss you may suffer if you rely on these measurements.

Hammersmith | 0207 371 4466 | hammersmith@winkworth.co.uk

Winkworth

Under the Property Misdescriptions Act 1991, these Particulars are a guide and act as information only. All details are given in good faith and are believed to be correct at time of publication. Potential purchasers or tenants must satisfy themselves by inspection or otherwise as to their correctness. No employee of Winkworth has authority to make or give any representation.

for every step...