



McGregor Road, W11

£565 per week (£2,448.33 PCM) *Part Furnished*



A LOVELY AND VERY CHARMING ONE DOUBLE BEDROOM FLAT ON THE FIRST FLOOR OF THIS PERIOD BUILDING.



Notting Hill Lettings

0207 727 3227 | nottinghill@winkworth.co.uk

Winkworth

for every step...

A lovely and very charming one double bedroom flat on the first floor of this attractive period building. The flat benefits from original stripped wooden floors, fantastic high ceilings and large south facing sash windows making the open plan kitchen and living area extremely light. The flat is available part-furnished and viewings are highly recommended.

Utilities:

Electricity – Mains

Water – Mains

Sewerage – Mains

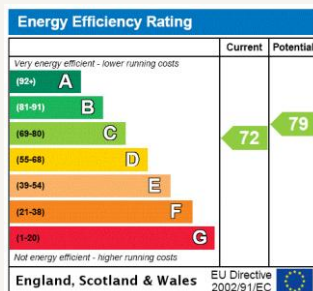
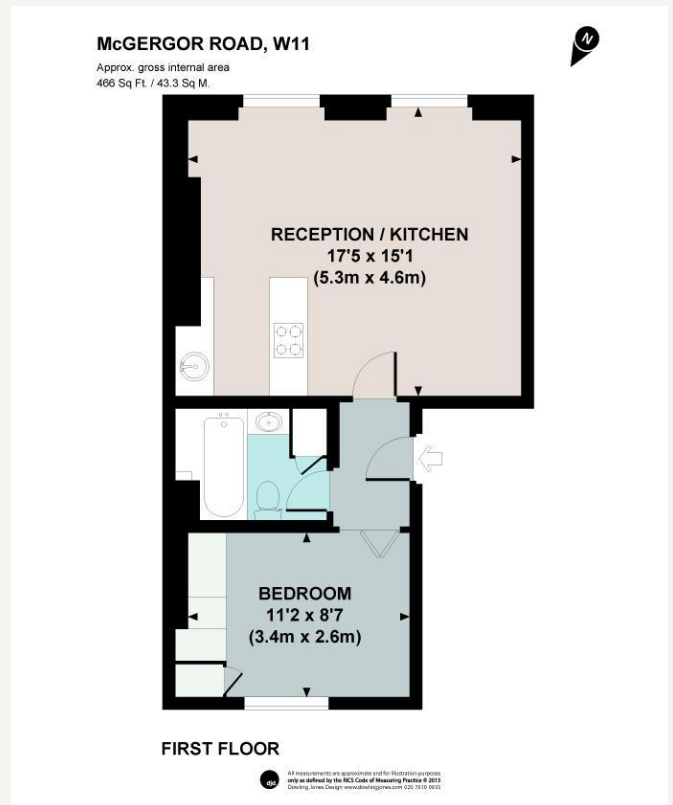
Heating – Gas

Broadband <https://checker.ofcom.org.uk/en-gb/broadband-coverage>

Mobile Coverage <https://checker.ofcom.org.uk/en-gb/mobile-coverage>

LOCATION

McGreggor Road is located close to Portobello and runs East to West between St Lukes and All Saints Road. The property is convenient for the local market and the tube station and multiple bus routes along Ladbroke Grove, only a little further away is the popular stretch of Westbourne Grove with its abundance of boutiques, cafes and restaurants.



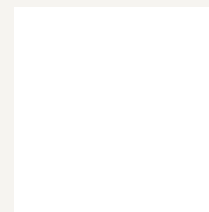
MATERIAL INFO

Deposit: £2,825

Holding Deposit: £565

Council Tax Band: D (RBKC)

For more information, scan the QR code or visit the link below



<https://www.winkworth.co.uk/rent/property/NHS130219>

Where no figures are shown, we have been unable to ascertain the information. All figures that are shown were correct at the time of printing.

Notting Hill Lettings

0207 727 3227 | nottinghill@winkworth.co.uk

Winkworth

for every step...

Winkworth wishes to inform prospective buyers and tenants that these particulars are a guide and act as information only. All our details are given in good faith and believed to be correct at the time of printing but they don't form part of an offer or contract. No Winkworth employee has authority to make or give any representation or warranty in relation to this property. All fixtures and fittings, whether fitted or not are deemed removable by the vendor unless stated otherwise and room sizes are measured between internal wall surfaces, including furnishings.