



## THE LODGE, CORRINGHAM COURT, LONDON, NW11 £350,000 LEASEHOLD (SHARE OF FREEHOLD)

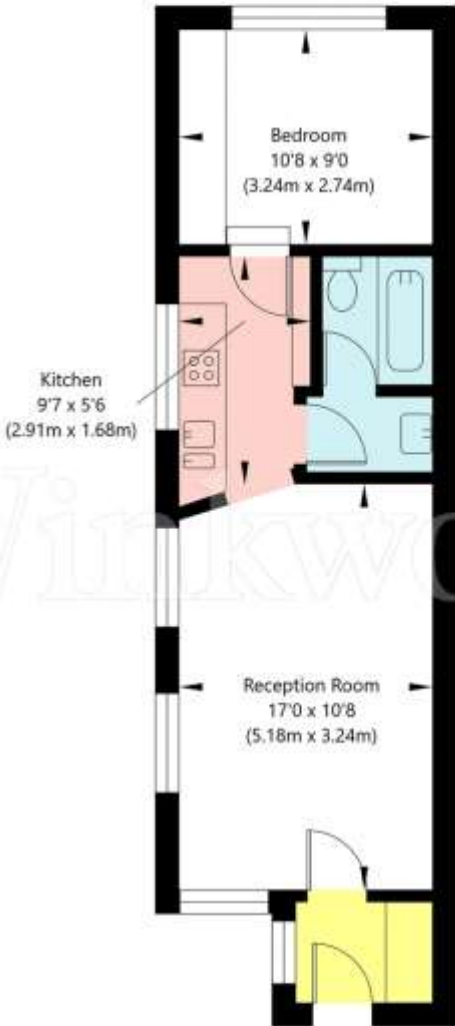
Originally designated as the Porters Lodge, we are delighted to offer this 1 bedroom ground floor detached property located within the grounds of Corringham Court, Corringham Road. Sitting adjacent to the Heath Extension, this is a wonderful opportunity to purchase either a starter home, a rental investment or even a bijou pied & terre.

1 BEDROOM/ DETACHED BUILDING/ COMMUNAL GARDENS/ LONG LEASE/  
PARKING AVAILABILITY/ CHAIN FREE/ EPC RATING: E/ COUNCIL TAX BAND:  
BARNET - G

DESCRIPTION:

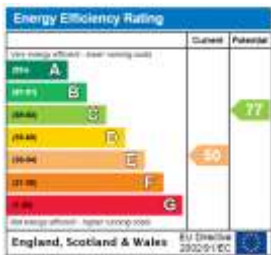
Corringham Court, Corringham Road, London, NW11 7BY

Ground Floor  
GROSS INTERNAL FLOOR AREA  
APPROX. 38.06 SQ M / 410 SQ FT



APPROXIMATE GROSS INTERNAL FLOOR AREA 38.06 SQ M / 410 SQ FT  
THIS FLOOR PLAN IS FOR ILLUSTRATIVE PURPOSES ONLY AND  
SHOULD BE USED FOR THIS PURPOSE BY PROSPECTIVE APPLICANTS AS ITS NOT TO SCALE.

(c) AMBERSHORE PIX LIMITED / PHOTO - VIDEO - FLOOR PLANS / 0800 999 1577 / WWW.AMBERSHOREPIX.CO.UK



Leasehold 999 years from 29<sup>th</sup> September 1975

Service Charge & Reserve Fund - £5,226.8 p/a