



LANFREY PLACE, W14
£1,000,000 FREEHOLD

A beautifully presented modern house with a south-facing garden located on a quiet cul-de-sac.

Fulham & Parsons Green | 020 7731 3388 | fulham@winkworth.co.uk

Winkworth

for every step...

winkworth.co.uk



This lovely bright house has been opened up the ground floor and converted the garage to create a smart reception room. Towards to the rear is a newly refurbished kitchen with modern appliances, plenty of preparation space and ample storage. Double doors leads through the kitchen onto the low maintenance, sunny garden.

On the first floor is a stylish second reception room with large windows creating a modern fresh feel. With views over the garden is a double bedroom and a modern shower room. The house comprises a further two double bedrooms served by a large family bathroom.

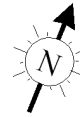
Lanfrey Place is situated moments from both West Kensington and Barons Court tube stations, in the heart of Barons Court/West Kensington. An array of restaurant and local shops can be found across North End Road and there is a Waitrose, literally on the doorstep. Kensington High Street and Earls Court are located nearby, offering extensive shopping and multiple further transport links.



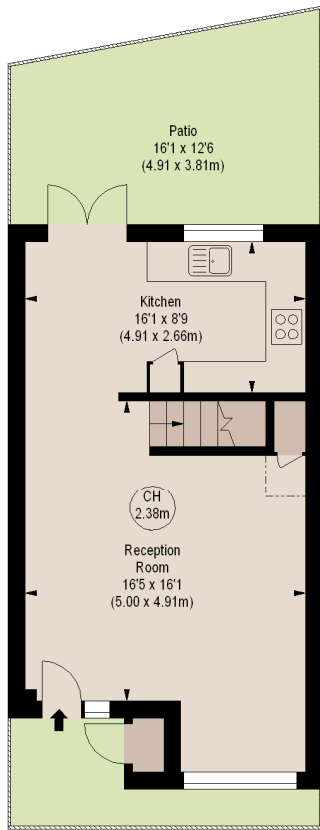


LANFREY PLACE, W14

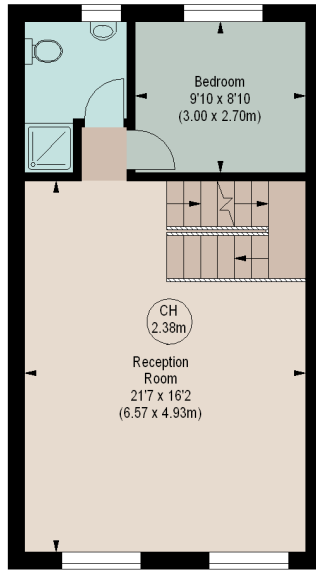
Approximate gross internal area
1415 sq ft / 131.45 sq m



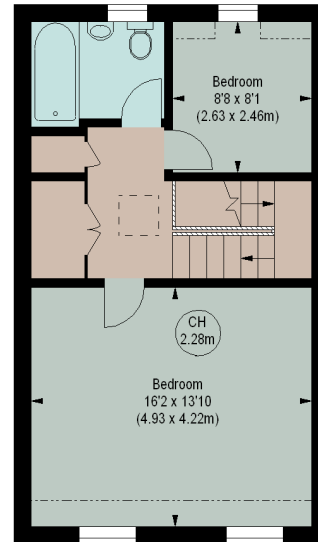
Key :
CH - Ceiling Height



GROUND FLOOR
(454 sq ft.)



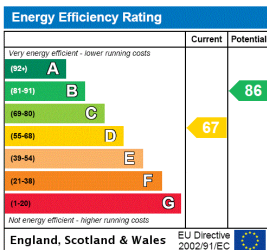
FIRST FLOOR
(491 sq ft.)



SECOND FLOOR
(470 sq ft.)

The floor plan is not to scale and measurements and areas shown are approximate and therefore should be used for illustrative purposes only. The plan has been prepared in accordance with the RICS code of Measuring Practice and whilst we have confidence in the information produced, it must not be relied on. If there is any aspect of particular importance, you should carry out or commission your own inspection of the property.
Copyright of FeaturePRO.

This floorplan is for illustration purposes only and is not to scale. The position and size of doors, windows, appliances and other features are approximate.



Fulham & Parsons Green | 020 7731 3388 | fulham@winkworth.co.uk



for every step...

winkworth.co.uk

Winkworth wishes to inform prospective buyers and tenants that these particulars are a guide and act as information only. All our details are given in good faith and believed to be correct at the time of printing but they don't form part of an offer or contract. No Winkworth employee has authority to make or give any representation or warranty in relation to this property. All fixtures and fittings, whether fitted or not are deemed removable by the vendor unless stated otherwise and room sizes are measured between internal wall surfaces, including furnishings.