



BRANKSOME WAY, HARROW, HA3
OFFERS IN EXCESS OF £500,000 FREEHOLD

THREE BEDROOM SEMI-DETACHED HOUSE IN A PRIME YET PEACEFUL LOCATION

DESCRIPTION

SOLD AS SEEN. This three-bedroom semi-detached house of 1930s property is a perfect blank canvas for growing family looking for a property to put their personal mark on and create their forever home or suited equally well for a developer or buy to let investor seeking a refurbishment opportunity. This property currently comprises of through lounge, kitchen, three bedrooms, and with a family bathroom. Off street parking too a share driveway and a garage with a generous rear garden, with further potential to extend into the loft subject to planning. Located in this sought after residential location in the Lindsay Drive Estate, close by to local schools, transport, and shops. Offered for sale chain free, viewing advised.

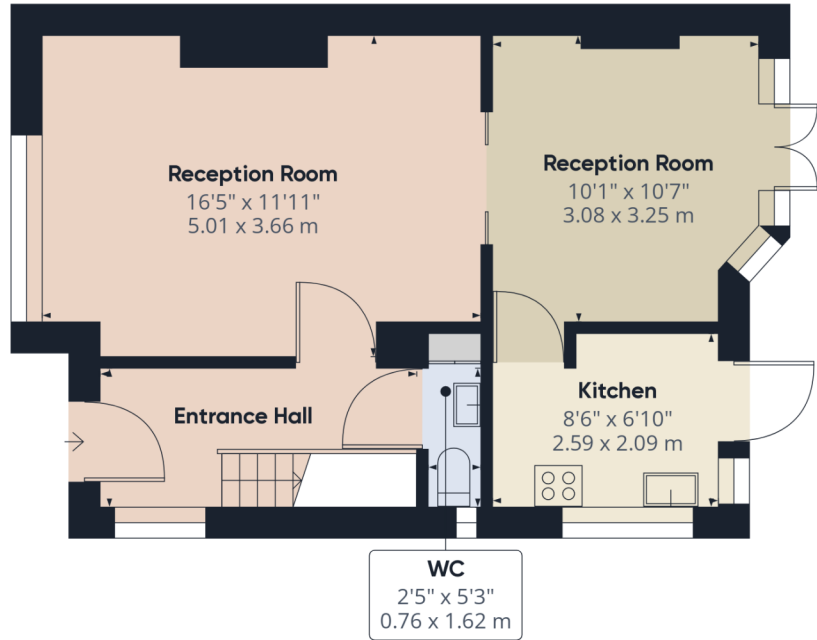
Kingsbury | 020 8204 0000 | kingsbury@winkworth.co.uk

AT A GLANCE

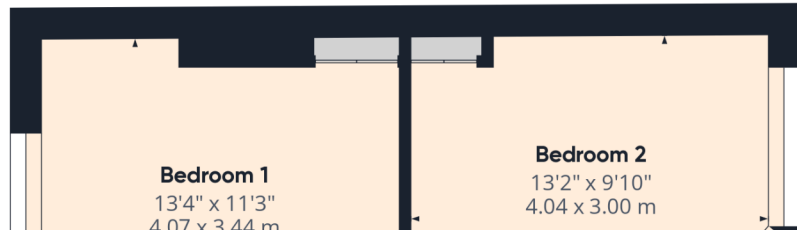
- CHAIN FREE
- GARAGE
- IDEAL DEVELOPMENT PROJECT
- CATCHMENT AREA FOR LOCAL SCHOOLS
- 3 BEDROOMS SEMI DETACHED
- CHAIN FREE

Winkworth

for every step...



Ground Floor



This floorplan is for illustration purposes only and is not to scale. The position and size of doors, windows, appliances and other features are approximate.

Energy Efficiency Rating		Current	Potential
Very energy efficient - lower running costs			
(92)	A		90
(81-91)	B		
(69-80)	C		
(55-68)	D	62	
(39-54)	E		
(21-38)	F		
(1-20)	G		
Not energy efficient - higher running costs			
England, Scotland & Wales		EU Directive 2002/91/EC	



Kingsbury | 020 8204 0000 | kingsbury@winkworth.co.uk

for every step...

winkworth.co.uk

Winkworth wishes to inform prospective buyers and tenants that these particulars are a guide and act as information only. All our details are given in good faith and believed to be correct at the time of printing but they don't form part of an offer or contract. No Winkworth employee has authority to make or give any representation or warranty in relation to this property. All fixtures and fittings, whether fitted or not are deemed removable by the vendor unless stated otherwise and room sizes are measured between internal wall surfaces, including furnishings.