



WOOLWICH ROAD, GREENWICH, LONDON, SE10  
GUIDE PRICE £300,000-£315,000 SHARE OF FREEHOLD

WE ARE PLEASED TO OFFER THIS WELL PRESENTED  
GROUND FLOOR, ONE BEDROOM, VICTORIAN  
CONVERSION FLAT, THAT FEATURES A SUPERB  
PRIVATE GARDEN AND MEASURES CIRCA 595 SQ FT!

Greenwich | 02030533033 | greenwich@winkworth.co.uk

**Winkworth**

*winkworth.co.uk*

See things differently



## DESCRIPTION:

Guide Price £300,000-£315,000. We are pleased to offer this well presented ground floor, one bedroom, Victorian conversion flat, that features a superb private garden and measures circa 595 sq ft!

Whilst in good condition its worth mentioning that the property would benefit from an update. The accommodation is larger than average and comprises a lovely front reception room, with bay window and feature fireplace. This then opens onto an 11ft kitchen breakfast room which is well fitted and has a feature open brick wall and also access to the garden. There is a good sized double bedroom and a bathroom, plus separate WC. The rear garden is south facing, completely paved and has a large shed.

Woolwich Road is located in East Greenwich and is within the Halstow School Catchment area. The picturesque local Pleasaunce is also close by, as are local shops and Westcomb Park mainline rail. The town centre sits a short walk to the west of the property, as does The Royal Park with its Observatory.

## AT A GLANCE

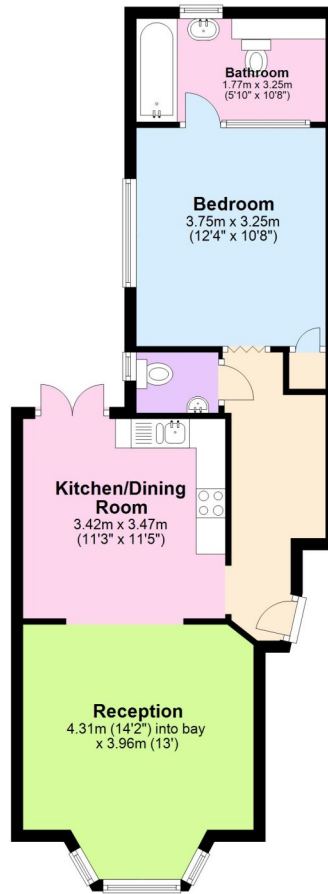
- one bedroom flat
- Victorian conversion
- ground floor
- private paved garden
- circa 595 sq ft
- share of freehold
- kitchen breakfast room
- separate WC
- East Greenwich location
- close to mainline rail





### Ground Floor

Approx. 55.3 sq. metres (595.7 sq. feet)



Total area: approx. 55.3 sq. metres (595.7 sq. feet)

This floorplan is for illustration purposes only and is not to scale. The position and size of doors, windows, appliances and other features are approximate.

Greenwich | 02030533033 | greenwich@winkworth.co.uk

**Winkworth**

*winkworth.co.uk*

See things differently

Winkworth wishes to inform prospective buyers and tenants that these particulars are a guide and act as information only. All our details are given in good faith and believed to be correct at the time of printing but they don't form part of an offer or contract. No Winkworth employee has authority to make or give any representation or warranty in relation to this property. All fixtures and fittings, whether fitted or not are deemed removable by the vendor unless stated otherwise and room sizes are measured between internal wall surfaces, including furnishings.