

WATLINGTON STREET, BERKSHIRE, RG1 4AY
£1,300 PER MONTH FURNISHED

ONE BEDROOM 7TH FLOOR APARTMENT IN THIS MODERN TOWN CENTRE DEVELOPMENT

Reading | 0118 4022 300 | reading@winkworth.co.uk

Winkworth

for every step...

winkworth.co.uk



DESCRIPTION:

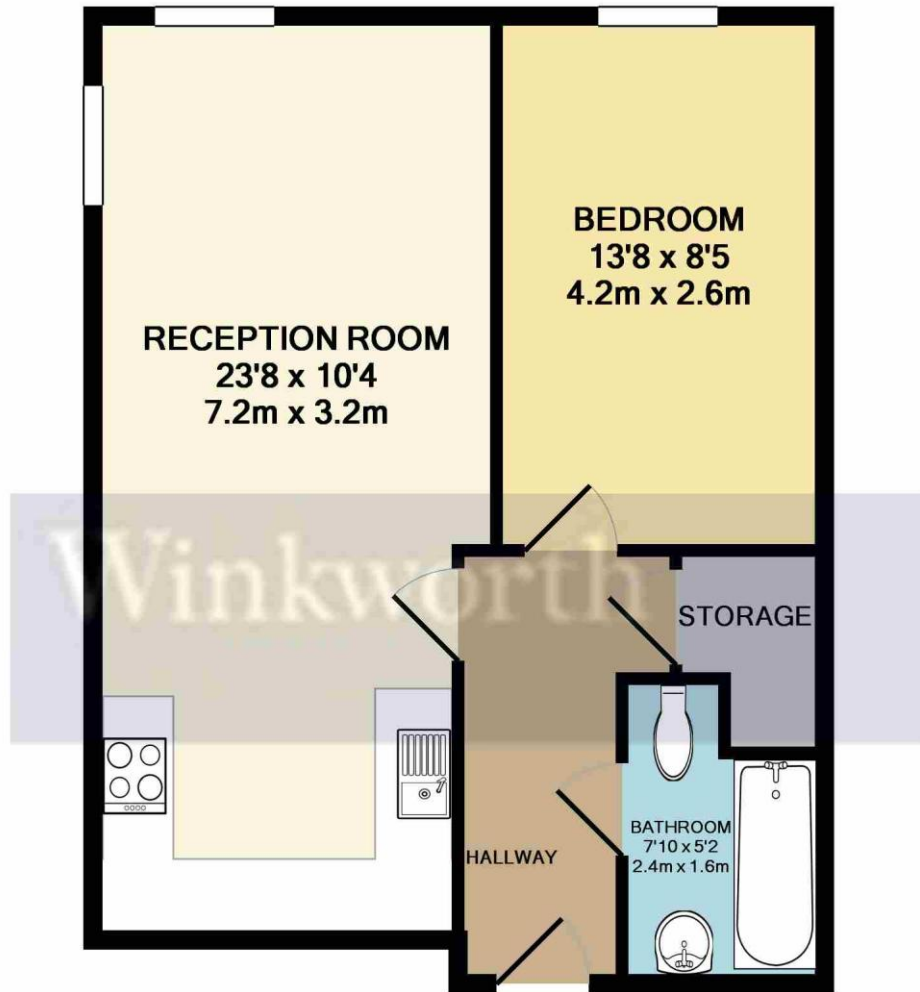
Set in the Eldon Road conservation area a short walk to Reading Station and The Oracle shopping and entertainment complex is this smart 7th floor town centre apartment. This one bedroom apartment built by Crest Nicholson in 2007 is a on the upper floors of this development with lift access and offers far reaching views over Reading. Living accommodation comprises; a double bedroom, an open plan living space with a contemporary fitted kitchen complete with a range of integrated appliances and a modern three piece bathroom. The property also offers use of a communal roof terrace. Available 21st July 2025. Furnished.

AT A GLANCE

- One Bedroom Town Centre Apartment
- 7th Floor With Lift
- Open Plan Living Space
- Council tax band C
- No parking
- Available 21st July
- Furnished





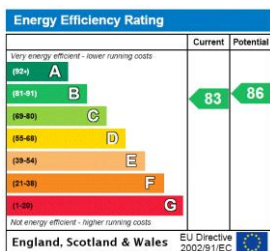


TOTAL APPROX. FLOOR AREA 454 SQ.FT. (42.1 SQ.M.)

Whilst every attempt has been made to ensure the accuracy of the floor plan contained here, measurements of doors, windows, rooms and any other items are approximate and no responsibility is taken for any error, omission, or mis-statement. This plan is for illustrative purposes only and should be used as such by any prospective purchaser. The services, systems and appliances shown have not been tested and no guarantee as to their operability or efficiency can be given

Made with Metropix ©2019

This floorplan is for illustration purposes only and is not to scale. The position and size of doors, windows, appliances and other features are approximate.



Deposit: £1,500.00

Holding Deposit: £300.00

Council Tax Band: C

Where no figures are shown, we have been unable to ascertain the information. All figures that are shown were correct at the time of printing.

Reading | 0118 4022 300 | reading@winkworth.co.uk

Winkworth

for every step...

winkworth.co.uk

Winkworth wishes to inform prospective buyers and tenants that these particulars are a guide and act as information only. All our details are given in good faith and believed to be correct at the time of printing but they don't form part of an offer or contract. No Winkworth employee has authority to make or give any representation or warranty in relation to this property. All fixtures and fittings, whether fitted or not are deemed removable by the vendor unless stated otherwise and room sizes are measured between internal wall surfaces, including furnishings.