



ST. ALBANS CRESCENT, N22

£665,000 FREEHOLD

DESCRIPTION:

This Chain-Free three-bedroom, Victorian property with secluded rear garden can be found on a peaceful Crescent within a short stroll of Wood Green Underground Station. (Piccadilly-Line Zone 3)

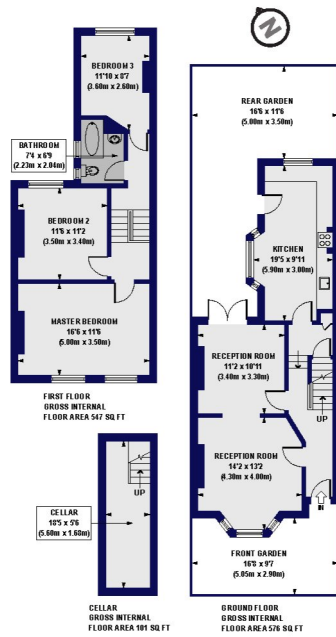
Harringay | 020 8800 5151 | harringay@winkworth.co.uk

Winkworth

for every step...

winkworth.co.uk

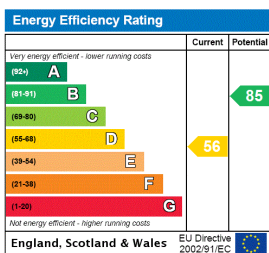
St. Albans Crescent, N22
Approx. Gross Internal Floor Area 1224 sq. ft / 113.74 sq. m



All measurements of walls, doors, windows, fittings and appliances, including gas and electricity, are given in feet and inches and do not constitute any warranty or representation by the seller, their agent or Winkworth. Any intended repairs must be noted in these plans. Dimensions are for illustration purposes only and should be verified in person by prospective purchasers.

Winkworth

This floorplan is for illustration purposes only and is not to scale. The position and size of doors, windows, appliances and other features are approximate.



Harringay | 020 8800 5151 | harringay@winkworth.co.uk

Winkworth

for every step...

winkworth.co.uk

winkworth wishes to inform prospective buyers and tenants that these particulars are a guide and act as information only. All our details are given in good faith and believed to be correct at the time of printing but they don't form part of an offer or contract. No winkworth employee has authority to make or give any representation or warranty in relation to this property. All fixtures and fittings, whether fitted or not are deemed removable by the vendor unless stated otherwise and room sizes are measured between internal wall surfaces, including furnishings.