



Palace Court, London, W2

£895 per week (£3,878.33 PCM) *UNFURNISHED*



A BEAUTIFUL AND SPACIOUS TWO BEDROOM FLAT WITH FANTASTIC LATERAL LIVING SPACE



Notting Hill Lettings

0207 727 3227 | nottinghill@winkworth.co.uk

Winkworth

for every step...

*Tenant fees may apply. Details of tenant fees are available on the Winkworth website and the link can be found with the displayed rent for the property. Tenants should ensure they are fully conversant with any fees before making an offer to rent and your local Winkworth office can provide written details upon request.



DESCRIPTION

This beautiful and very spacious two large double bedroom, two-bathroom flat is a fantastic lateral living space in a sought after and impressive secure portered building. The flat has lift access, plenty of built in storage and boasts period features such as the high ceilings, large windows and beautiful fireplace in the living room. Located a short walk from both the tube station and the local shops and restaurants on Westbourne Grove. Available unfurnished and viewings are highly recommended.

Palace Court is in an extremely convenient location a short walk from the many transport links and amenities of Notting Hill Gate and from Kensington Gardens.

Utilities:

Electricity – Mains

Water – Mains

Sewerage – Mains

Heating – Gas

Broadband <https://checker.ofcom.org.uk/en-gb/broadband-coverage>

Mobile Coverage <https://checker.ofcom.org.uk/en-gb/mobile-coverage>



For more information, scan the QR code or visit the link below

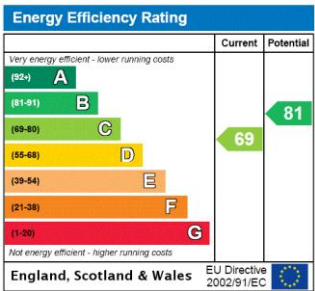


<https://www.winkworth.co.uk/rent/property/NHL110113>

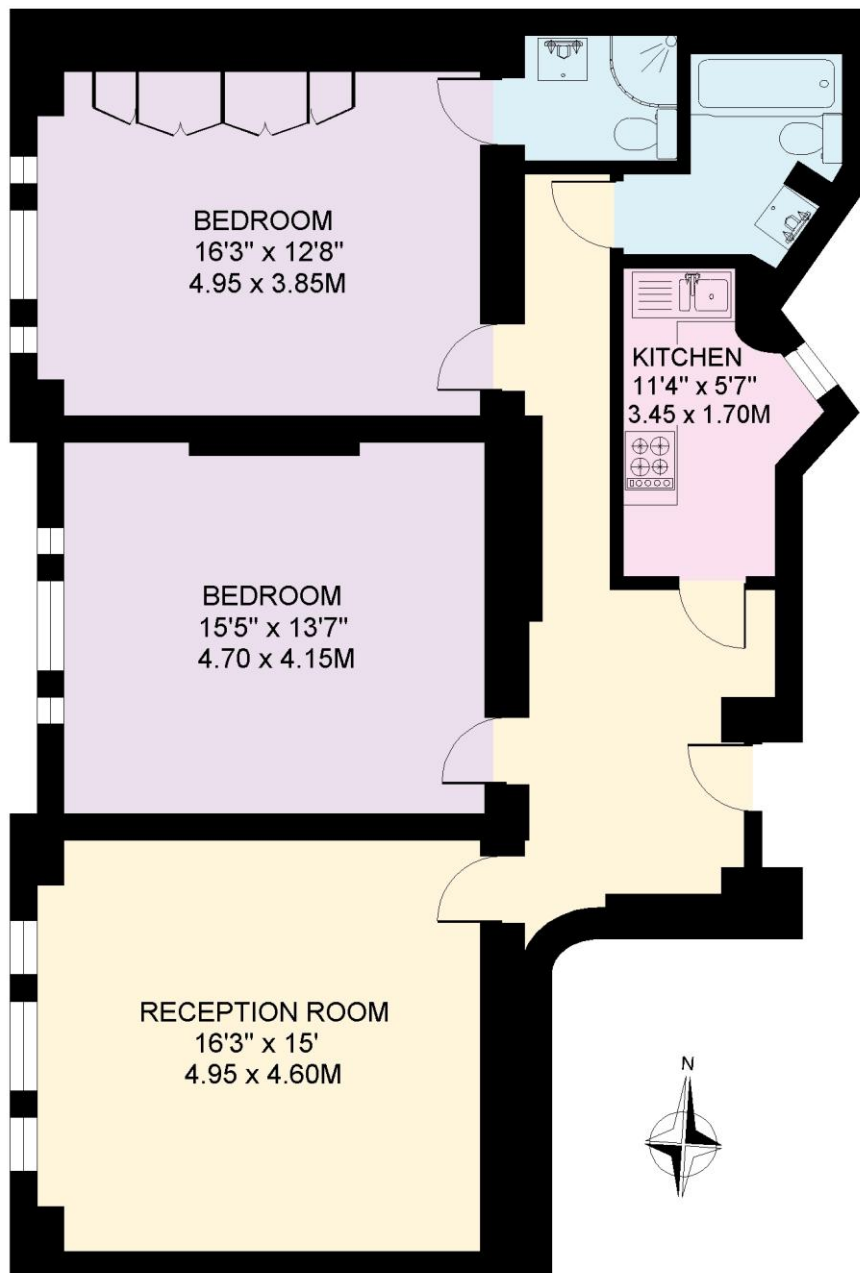
Where no figures are shown, we have been unable to ascertain the information. All figures that are shown were correct at the time of printing.

MATERIAL INFO

Deposit: £4,475
Holding Deposit: £895
Council Tax Band: G (Westminster)



PALACE COURT, HEREFORD ROAD
NOTTING HILL, LONDON W2
APPROXIMATE INTERNAL FLOOR AREA
1028 SQ.FT / 95.5 SQ.M.



LOWER GROUND FLOOR

COPYRIGHT
FLOORPLAN PRODUCED FOR KNIGHT FRANK
BY FLOORPLANNERS 07801 228850

Notting Hill Lettings

0207 727 3227 | nottinghill@winkworth.co.uk

Winkworth

for every step...

Winkworth wishes to inform prospective buyers and tenants that these particulars are a guide and act as information only. All our details are given in good faith and believed to be correct at the time of printing but they don't form part of an offer or contract. No Winkworth employee has authority to make or give any representation or warranty in relation to this property. All fixtures and fittings, whether fitted or not are deemed removable by the vendor unless stated otherwise and room sizes are measured between internal wall surfaces, including furnishings.