



## Alderney Street, SW1V

### £3,300 PER MONTH

**UNFURNISHED**

#### AT A GLANCE

- Two Double Bedrooms
- Large Reception
- Eat-in Kitchen
- Split Level
- Recently Refurbished
- Separate WC

## Winkworth

for every step...



Score	Energy rating	Current	Potential
92+	A		
81-91	B		
69-80	C		76 C
55-68	D	63 D	
39-54	E		
21-38	F		
1-20	G		

## ALDERNEY STREET, SW1V

£3,300 PER MONTH

UNFURNISHED

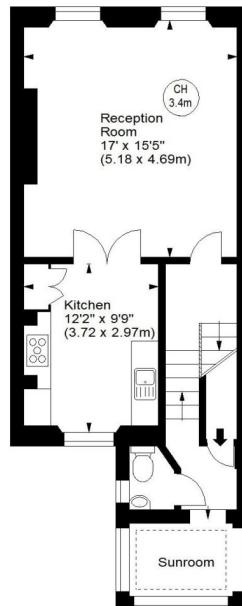
The property has been the subject of a recent refurbishment programme throughout, retains a number of period features and is flooded with natural light. Accommodation comprises a stunning bright reception room impressive ceiling height, contemporary fitted eat-in kitchen, two generous double bedrooms and a smart family bathroom. Further benefits include a useful winter garden / study with underfloor heating and a separate cloakroom for guests.



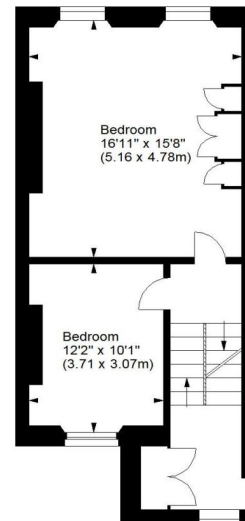
### Alderney Street, SW1

Approx. Gross Internal Area  
1090 Sq Ft - 101.26 Sq M

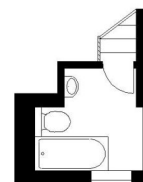
Key :  
CH - Ceiling Height



First Floor (49.41 sq m)

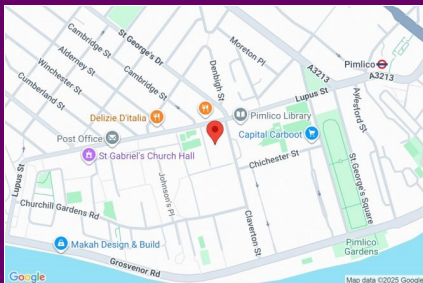


Second Floor (46.38 sq m)



Second Floor  
Half Landing (5.47 sq m)

For illustration purposes only. Not to scale.  
All measurements are taken and shown at floor level.  
www.r3photography.co.uk © Photography / Floor Plans / Lease Plans / EPCs



winkworth wishes to inform prospective buyers and tenants that these particulars are a guide and act as information only. All our details are given in good faith and believed to be correct at the time of printing but they don't form part of an offer or contract. No winkworth employee has authority to make or give any representation or warranty in relation to this property. All fixtures and fittings, whether fitted or not are deemed removable by the vendor unless stated otherwise and room sizes are measured between internal wall surfaces - including fire-chimneys.

Pimlico & Westminster | 020 7828 1786 |  
pimlico@winkworth.co.uk

winkworth.co.uk/pimlico

**Winkworth**

for every step...