



Flat 7 Newstead Court
Southbourne, BH63HL
Guide Price £350,000 - £375,000





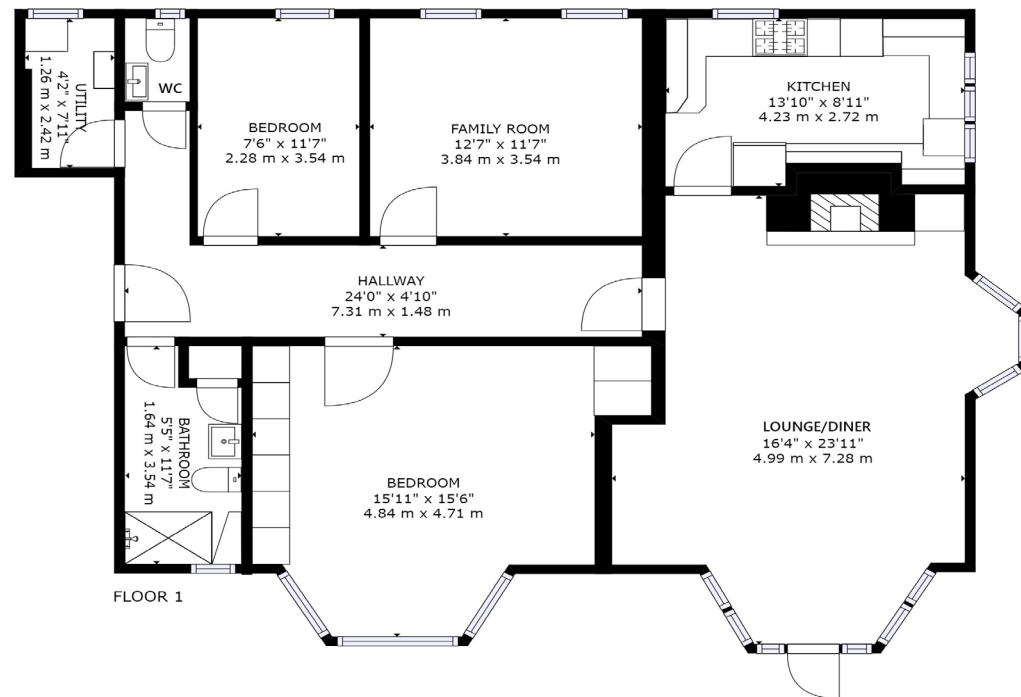
GUIDE PRICE - £350,000 - £375,000 SHARE OF FREEHOLD

01202 434365 | southbourne@winkworth.co.uk

An incredibly spacious, three bedroom, ground floor flat ideally situated for Southbourne high street and the golden sandy beach. No forward chain!

Three Bedrooms | Fitted Kitchen |
Ground Floor | Double Glazed Windows | Modern Bathroom |
Great Location | No Onward Chain | Garage |
Private Basement | Share Of Freehold

EPC D | Council Tax Band B
Ground Rent tbc | Maintenance £800PA
AirBnB Not allowed | No Pets Allowed



GROSS INTERNAL AREA
FLOOR 1: 1245 sq. ft, 116 m²
TOTAL: 1245 sq. ft, 116 m²
SIZES AND DIMENSIONS ARE APPROXIMATE, ACTUAL MAY VARY.



LOCATION

Southbourne is located on the south-east suburb of Bournemouth and neighbours both Christchurch and Boscombe. The area enjoys its own shopping experience with the main high street offering a varied range of shops, restaurants and bars. Southbourne itself enjoys the award-winning blue flag sandy beaches with a level walk promenade extending from Hengistbury Head through to Sandbanks.

A local bus service provides links to Bournemouth and Poole with a different shopping experience together with a number of restaurants and bars providing a vibrant nightlife. A local train station provides direct links to Southampton, Southampton Airport and London which is approximately 100 miles away.

Winkworth Southbourne
29a Southbourne Grove, Dorset, BH6 3QT
01202 434365 | southbourne@winkworth.co.uk
winkworth.co.uk/southbourne

Winkworth