



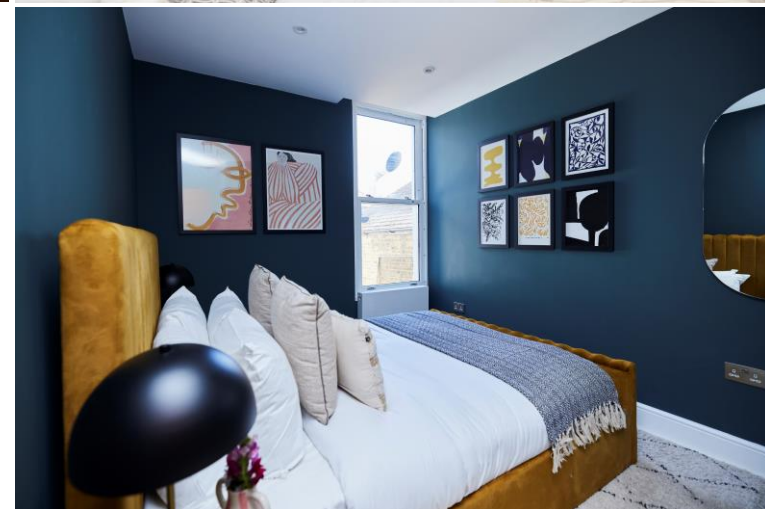


A beautifully presented flat forming part of this smart period building in Earlsfield. Accommodation comprises an entrance hall with utility cupboard space, spacious dual aspect, open-plan kitchen/dining/reception area, two good sized double bedrooms with fitted cupboards providing hanging and shelving space and a luxurious modern bathroom. The property has benefitted from a complete back to brick renovation in recent years. Sold with no onward chain.

Atheldene Road is a quiet residential street close to Earlsfield Train station (0.4 miles away). Ideally located for all the shops, bars, restaurants and other amenities of both Earlsfield and Wandsworth.

- Beautifully Presented Flat
- Two Double Bedrooms
- Open Plan Kitchen/Living
- Modern Bathroom
- Excellent transport Links
- Chain Free

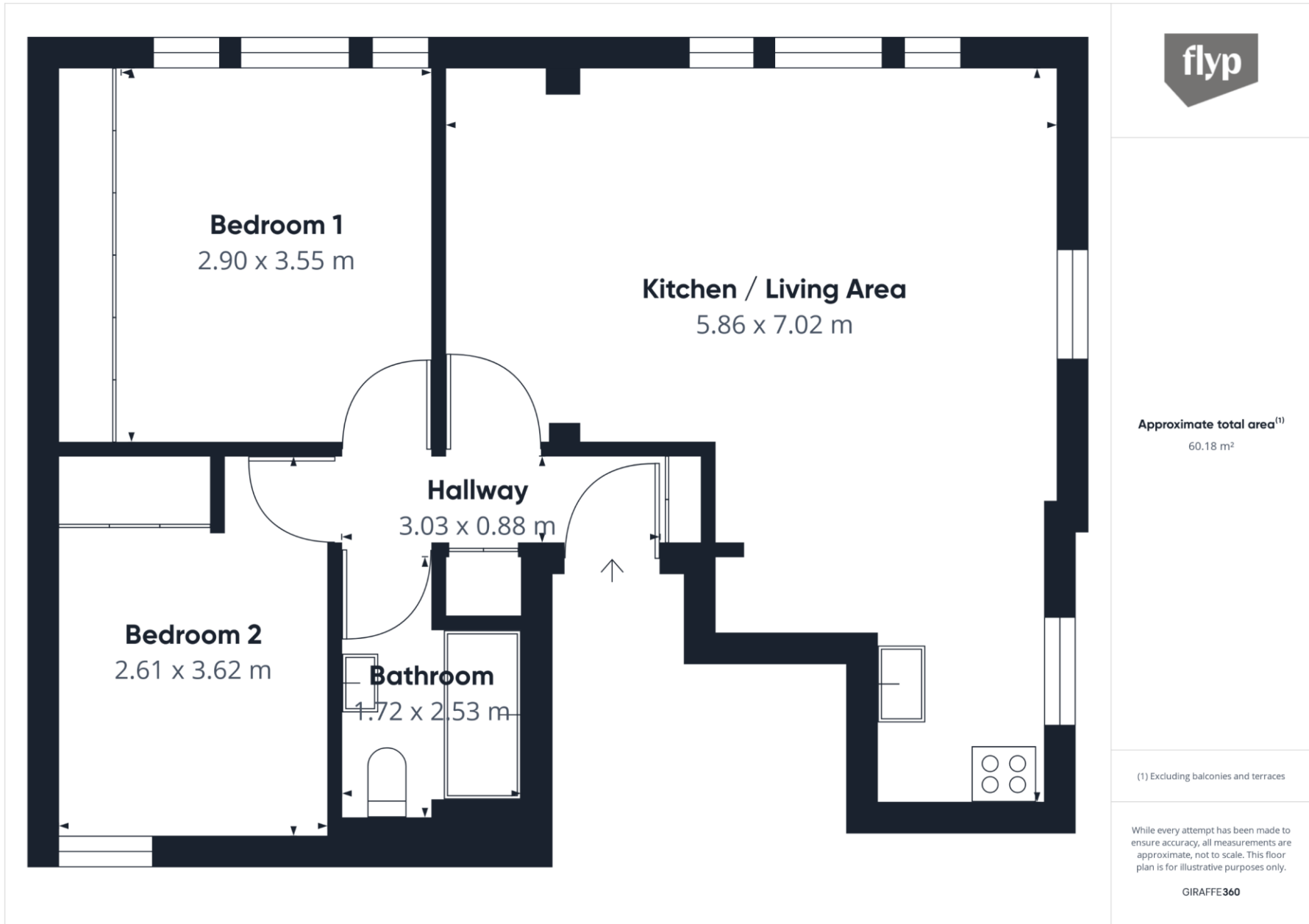
Atheldene Road, Earlsfield, SW18 3BN



Energy Efficiency Rating		
	Current	Potential
Very energy efficient - lower running costs		
(92+) A		
(81-91) B		
(69-80) C	80	80
(55-68) D		
(39-54) E		
(21-38) F		
(1-20) G		
Not energy efficient - higher running costs		
England, Scotland & Wales	EU Directive 2002/91/EC	

Freehold

Internal area
Approximate gross internal area:
Total 650 sq ft/ 60.18 sq m



W621 Ravensworth 01670 713330



Under the Property Misdescriptions Act these particulars are intended as a guide and act as information only. They give a fair overall description for the guidance of potential purchasers or tenants but do not constitute an offer or part of a contract. All details and approximate measurements are given in good faith and are believed to be correct at the time of printing, but any potential purchasers or tenants should not rely on the mis-statements or representations of fact but must satisfy themselves by inspection or otherwise as to their correctness. No employee of Winkworth has authority to make or give any representation or warranty to this property.

Southfields Office 241 Wimbledon Park Road, SW18 5RJ | Tel: 0208 877 1000 | E-mail: Southfields@winkworth.co.uk
winkworth.co.uk