



SENTINEL HOUSE, HENDON, LONDON, NW4
£205,000 LEASEHOLD

THIS BRIGHT, SPACIOUS AND NEWLY DECORATED TWO BEDROOM APARTMENT BENEFITS FROM TWO DOUBLE BEDROOMS, EAT-IN KITCHEN, BATHROOM AND A LARGE RECEPTION ROOM

Hendon | 020 8202 1031 | hendon@winkworth.co.uk

Winkworth

for every step...

winkworth.co.uk



DESCRIPTION:

CASH BUYERS ONLY - PLEASE BE AWARE THAT THIS PROPERTY HAS A LOW LEASE OF APPROX 49 YRS WHICH MAY NOT WORK FOR A BUYER REQUIRING A MORTGAGE AND MAY ONLY BE SUITABLE FOR A CASH BUYER. This bright, spacious and newly decorated two bedroom apartment benefits from two double bedrooms, eat-in kitchen, bathroom and a large reception room. Other benefits include: communal parking, lift, porter and its close proximity to a wide range of shops and amenities that can be found on the Square, while a wider array can be found in Hendon and the nearby Brent Cross Shopping Centre.

AT A GLANCE

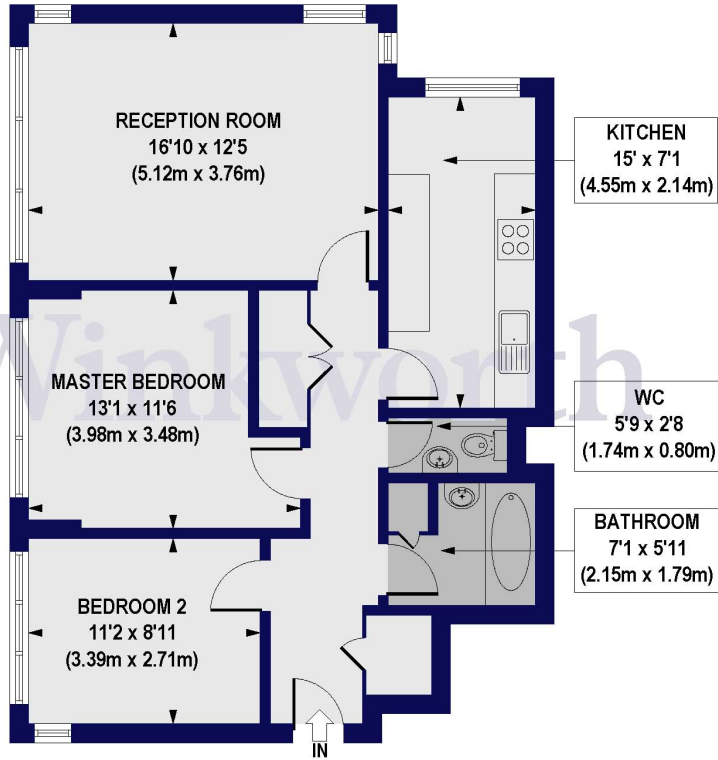
- LEASEHOLD APARTMENT - APPROX 50 YEARS
- TWO DOUBLE BEDROOMS
- AMAZING LOCATION IN THE HEART OF HENDON
- OFF STREET PARKING
- AMAZING VIEWS ACROSS LONDON
- EIGHTH FLOOR WITH LIFT

EPC: D





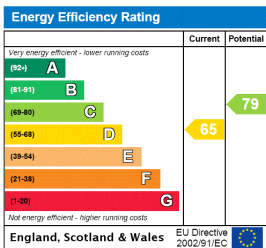
Sentinel House, Sentinel Square, NW4
Approx. Gross Internal Floor Area 754 sq. ft / 70.07 sq. m



All measurements of walls, doors, windows, fittings and appliances, including their size and location, are shown as standard sizes and do not constitute any warranty or representation by the seller, their agent or CP Creative. Any intending purchaser must satisfy himself by inspection or otherwise as to the correctness of the information contained in these plans. This plan is for illustrative purposes only and should be used as such by any prospective purchasers.

Winkworth

This floorplan is for illustration purposes only and is not to scale. The position and size of doors, windows, appliances and other features are approximate.



Winkworth

Hendon | 020 8202 1031 | hendon@winkworth.co.uk

for every step...

winkworth.co.uk

Winkworth wishes to inform prospective buyers and tenants that these particulars are a guide and act as information only. All our details are given in good faith and believed to be correct at the time of printing but they don't form part of an offer or contract. No Winkworth employee has authority to make or give any representation or warranty in relation to this property. All fixtures and fittings, whether fitted or not are deemed removable by the vendor unless stated otherwise and room sizes are measured between internal wall surfaces, including furnishings.