



**WATERLOW COURT, HEATH CLOSE, NW11**  
**£335,000 LEASEHOLD**

## **A CHARMING 1 BEDROOM FLAT LOCATED OPPOSITE THE HAMPSTEAD EXTENSION**

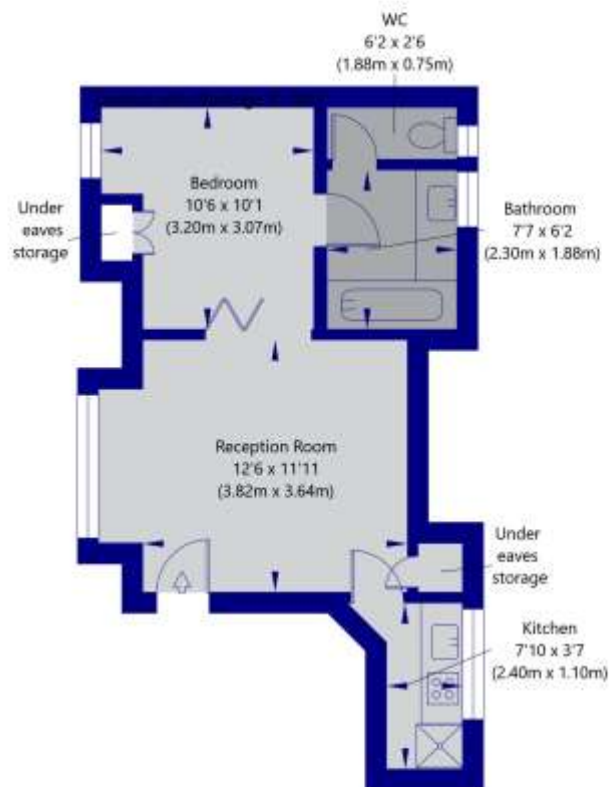
**1 Bedroom/ Communal Gardens/ Grade 2 Listed/  
Superb Location/ EPC Rating: D/ Council Tax Band: C**

## DESCRIPTION:

Waterlow Court is a Grade 2 listed character block located at the bottom of Heath Close, adjacent to the Hampstead Heath Extensions. It is situated approximately ¼ mile from Golders Green Station and has wonderful communal gardens surrounding the block with a cloistered entrance leading into a central courtyard. The flats are located on ground, 1<sup>st</sup> floor and 2<sup>nd</sup> floor centred around this lovely square creating a feeling of an old style Oxford or Cambridge university. These flats are not large but are highly desirable. This particular flat is located on the 2<sup>nd</sup> floor is offered chain free.

### 1 Bedroom 2nd Floor Apartment, Heath Close, London, NW11

Second Floor  
GROSS INTERNAL FLOOR AREA  
APPROX. 381 SQ FT / 35.37 SQ M



THIS FLOOR PLAN IS FOR ILLUSTRATIVE PURPOSES ONLY AND SHOULD BE USED FOR THIS PURPOSE BY PROSPECTIVE APPLICANTS AS ITS NOT TO SCALE.  
(c) AMBERSHORE PIX LIMITED / PHOTO - VIDEO - FLOOR PLANS / 0800 999 1577 / WWW.AMBERSHOREPIX.CO.UK

