



MACKLIN STREET, LONDON, WC2B
£1,395,000 LEASEHOLD APPROX. 971 YEARS REMAINING

Winkworth



MACKLIN STREET, WC2B

This is a superb and historical building that was one of the warehouses for Sir Cameron Mackintosh Theatre Costumes.

All set in a solid small red brick mansion block.

The flat is on two levels, ground and lower ground floor, and it has been transformed into a wonderful home that has high ceilings, lots of light and a courtyard garden full of plants and lush greenery.

The whole apartment is spacious and beautiful and exudes charm.

There is a glass framed staircase and patio doors leading onto the courtyard. There is excellent storage and a mystic about the place.

One / two bedrooms, two bathrooms, big lounge dining area, study, courtyard kitchen, high ceilings, good light.

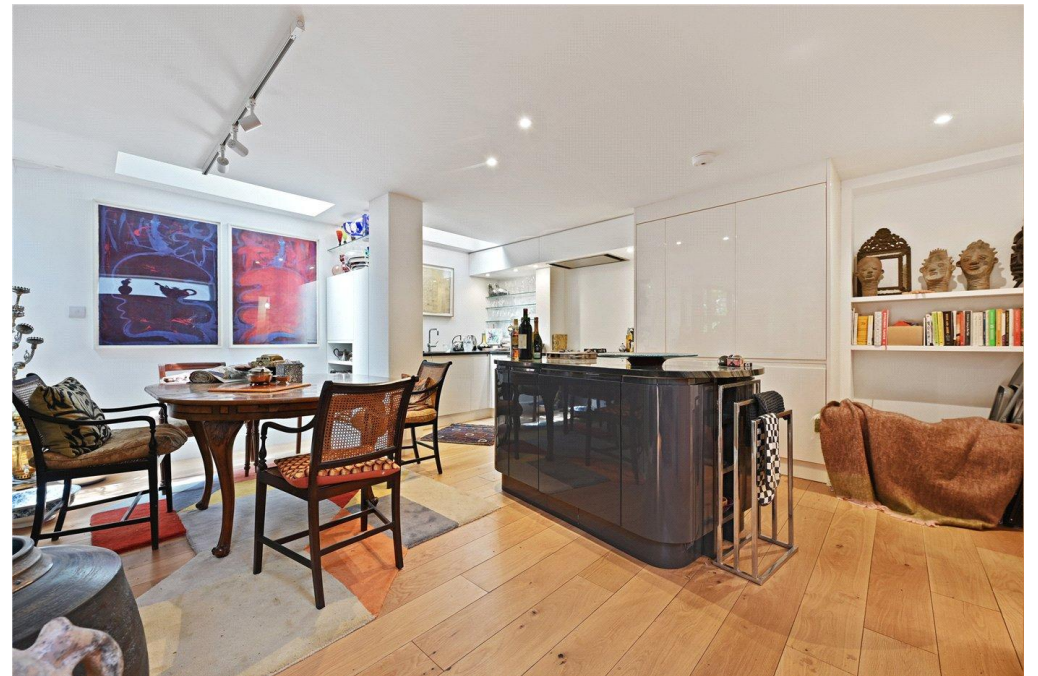
Leasehold approx. 999 years from 1997.

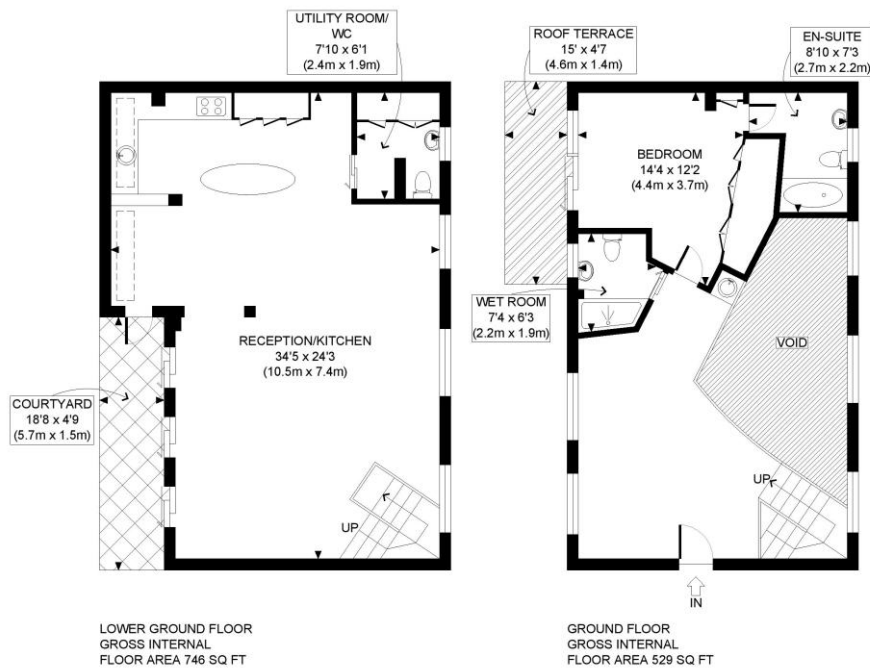
Service charge approx. £2,500 p/a.

Ground Rent approx. £50 p/a

Council Tax Band G - approx. £3,511.00 p/a







APPROX. GROSS INTERNAL FLOOR AREA: 1275 SQ FT/ 118 SQM

Winkworth

This plan is for illustrative purposes only and should be used as such by any prospective client. Whilst every attempt has been made to ensure the accuracy of the Floor Plan contained here, measurements of the doors, windows, rooms and any other items are approximate and no responsibility is taken for any errors, omissions, or misstatement. The services, systems and appliances shown have not been tested and no guarantee as to the operability or efficiency can be given.

PROPERTY PHOTO PLANS COOK

Score	Energy rating	Current	Potential
92+	A		
81-91	B		
69-80	C		
55-68	D		66 D
39-54	E	41 E	
21-38	F		
1-20	G		

West End | 020 7240 3322 | westend@winkworth.co.uk

winkworth.co.uk

Winkworth wishes to inform prospective buyers and tenants that these particulars are a guide and act as information only. All our details are given in good faith and believed to be correct at the time of printing but they don't form part of an offer or contract. No Winkworth employee has authority to make or give any representation or warranty in relation to this property. All fixtures and fittings, whether fitted or not are deemed removable by the vendor unless stated otherwise and room sizes are measured between internal wall surfaces, including furnishings.

Winkworth