



Portland Road, W11

£695 per week (£3,011.66 PCM) *Part Furnished, Unfurnished*



A very charming two-bedroom flat in the heart of Clarendon cross and Holland Park area with pretty west facing private garden.



Notting Hill Lettings

0207 727 3227 | [nottinghill@winkworth.co.uk](mailto:nottinghill@winkworth.co.uk)

**Winkworth**

for every step...





Property comprises own entrance, hallway with utility cupboard, spacious master bedroom to the front of the flat with built in storage, tiled bathroom with overhead shower over bath. The property further comprises open plan fully fitted eat in kitchen, living room with glass conservatory leading out to a West facing private walled garden. The second bedroom/study is located off the living room with pretty view into the garden. The property is offered on either part-furnished or unfurnished basis and viewings highly recommended.

**LOCATION:**

This property is located in the very sought after Clarendon Cross on the junction with Portland Road, set in the heart of Holland Park with pretty cafes and boutiques as well the transport facilities of Holland Park underground.







## MATERIAL INFO

**Deposit:** £3,475

**Holding Deposit:** £695

**Council Tax Band:** E (RBKC)

Utilities:

Electricity – Mains

Water – Mains

Sewerage – Mains

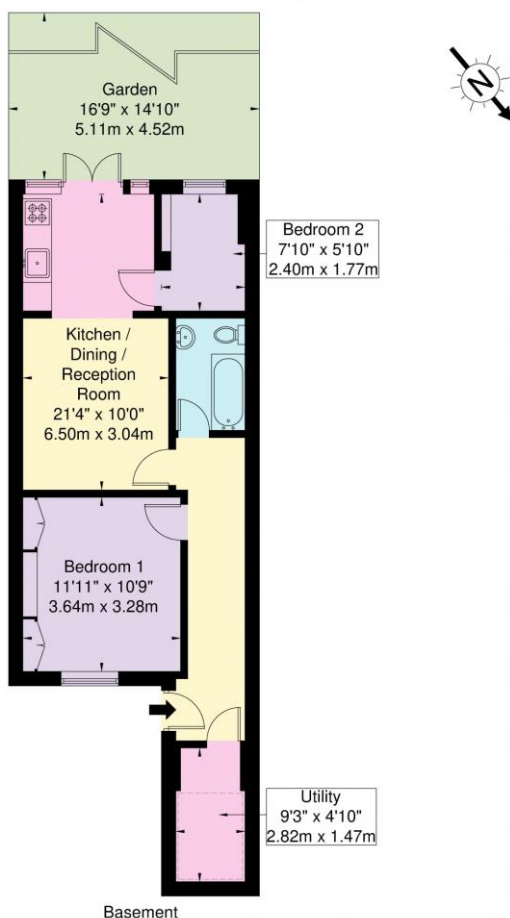
Heating – Gas

Broadband <https://checker.ofcom.org.uk/en-gb/broadband-coverage>

Mobile Coverage <https://checker.ofcom.org.uk/en-gb/mobile-coverage>

# Portland Road, W11 4LN

Approx. Gross Internal Area = 54.5 sq m / 586 sq ft

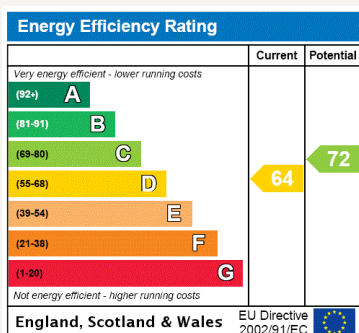


Ref

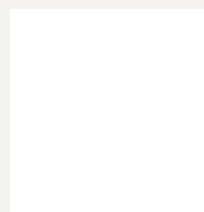
Copyright

**BLEU  
PLAN**

The Floor plan is not to scale and measurements and areas shown are approximate and therefore should be used for illustrative purposes only. The plan has been prepared in accordance with the RICS code of Measuring Practice and whilst we have confidence in the information produced it must not be relied on. If there is any aspect of particular importance, you should carry out or commission your own inspection of the property.  
Copyright @ BLEUPLAN



For more information, scan the QR code or visit the link below



<https://www.winkworth.co.uk/rent/property/NHS220046>

Where no figures are shown, we have been unable to ascertain the information. All figures that are shown were correct at the time of printing.

**Notting Hill Lettings**

0207 727 3227 | [nottinghill@winkworth.co.uk](mailto:nottinghill@winkworth.co.uk)

**Winkworth**

for every step...

Winkworth wishes to inform prospective buyers and tenants that these particulars are a guide and act as information only. All our details are given in good faith and believed to be correct at the time of printing but they don't form part of an offer or contract. No Winkworth employee has authority to make or give any representation or warranty in relation to this property. All fixtures and fittings, whether fitted or not are deemed removable by the vendor unless stated otherwise and room sizes are measured between internal wall surfaces, including furnishings.