

PAGE STREET, MILL HILL, LONDON, NW7
£1,175,000 FREEHOLD

SPACIOUS FIVE BEDROOM SEMI-DETACHED FAMILY HOME SITUATED IN THIS POPULAR LOCATION IN MILL HILL

Hendon | 020 8202 1031 | hendon@winkworth.co.uk



for every step...

winkworth.co.uk

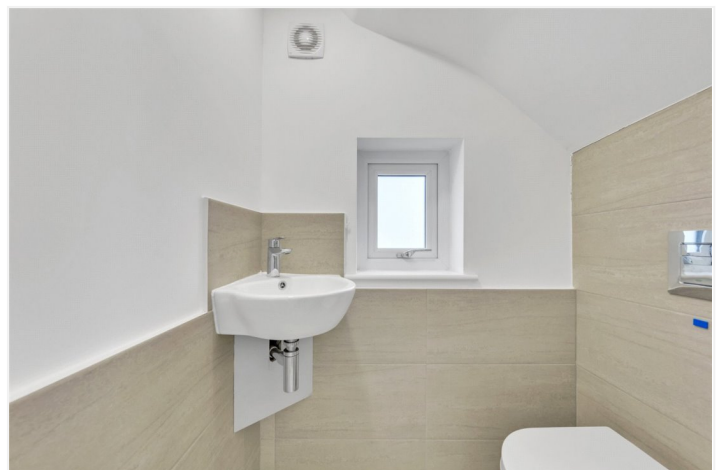
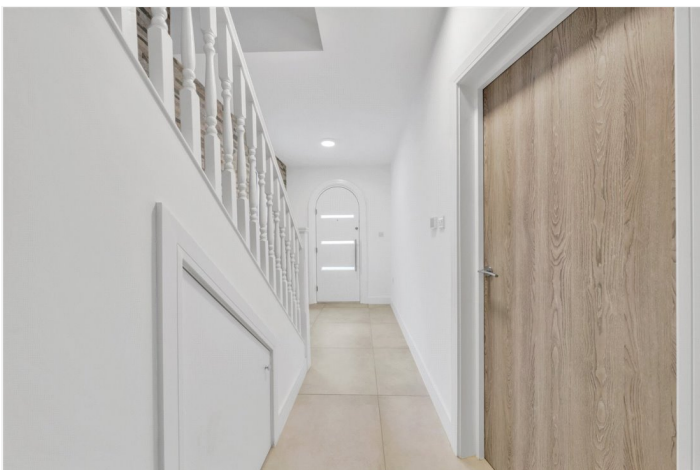


DESCRIPTION:

NEW INSTRUCTION- Spacious five-bedroom semi-detached family home situated in this popular location in Mill Hill. The property has been extended and is bright and airy throughout. Excellent condition. The property also has an outhouse with additional storage as well. Freehold. Chain free. VIDEO TOUR AVAILABLE ONLINE

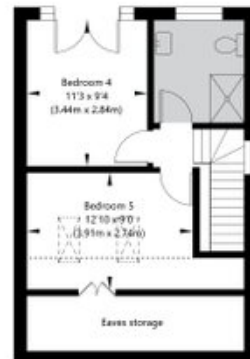
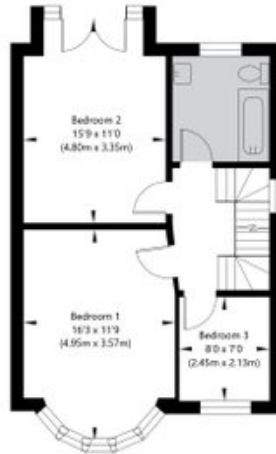
AT A GLANCE

- FIVE BEDROOM EXTENDED SEMI DETACHED FAMILY HOME
- BRIGHT AND AIRY
- VERY GOOD CONDITION/IMMACULATE
- TWO BATHROOMS
- COMPRISES OUTHOUSE PLUS STORAGE





Page Street, London NW7 2EE



APPROXIMATE GROSS INTERNAL FLOOR AREA INCLUDING OUTBUILDINGS 171.69 SQ M / 1848 SQ FT
 THIS FLOOR PLAN IS FOR ILLUSTRATIVE PURPOSES ONLY AND
 SHOULD BE USED FOR THIS PURPOSE BY PROSPECTIVE APPLICANTS AS ITS NOT TO SCALE.

(c) AMBERSHORE PIX LIMITED / PHOTO - VIDEO - FLOOR PLANS / 0800 999 1577 / WWW.AMERSHOREPIX.CO.UK

This floorplan is for illustration purposes only and is not to scale. The position and size of doors, windows, appliances and other features are approximate.

Energy Efficiency Rating		Current	Potential
Very energy efficient - lower running costs			
(92-100)	A		
(81-91)	B		
(69-80)	C		
(55-68)	D		
(39-54)	E		
(21-38)	F		
(1-20)	G		
Not energy efficient - higher running costs			
England, Scotland & Wales		70	85
EU Directive 2002/91/EC			

Tenure: Freehold
Term: Expires -
Service Charge: £0 per annum
Ground Rent: £ 0 Annually (subject to increase)
Council Tax Band:

Where no figures are shown, we have been unable to ascertain the information. All figures that are shown were correct at the time of printing.

Hendon | 020 8202 1031 | hendon@winkworth.co.uk



for every step...

winkworth.co.uk

Winkworth wishes to inform prospective buyers and tenants that these particulars are a guide and act as information only. All our details are given in good faith and believed to be correct at the time of printing but they don't form part of an offer or contract. No Winkworth employee has authority to make or give any representation or warranty in relation to this property. All fixtures and fittings, whether fitted or not are deemed removable by the vendor unless stated otherwise and room sizes are measured between internal wall surfaces, including furnishings.