



**CELESTIAL GARDENS, SE13**  
**£1,800 PER MONTH UNFURNISHED**

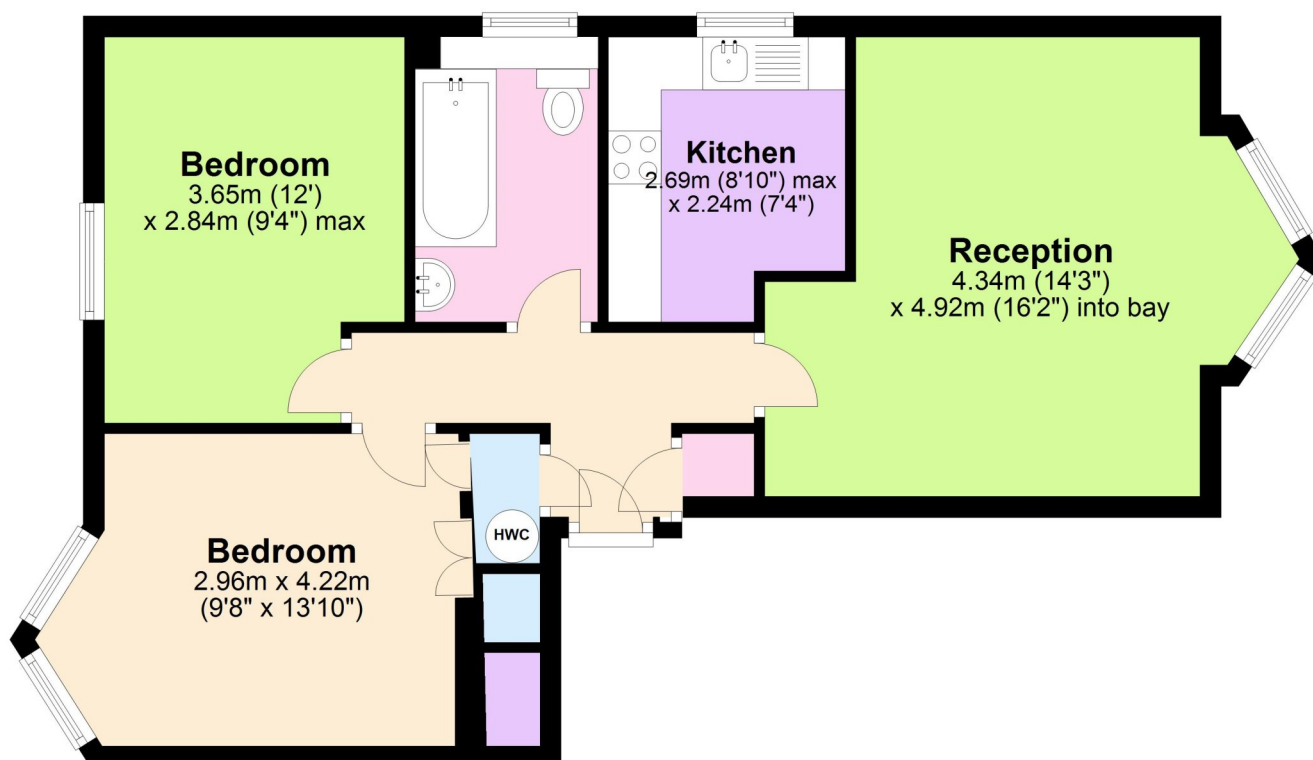
**DESCRIPTION:**

A two double bedroom flat with allocated off street parking in this popular gated development within walking distance of both Lewisham and Blackheath. Offered unfurnished and available 26th November 2025, your earliest viewing is highly recommended.

**Blackheath** | 0208 8520999 | [blackheath@winkworth.co.uk](mailto:blackheath@winkworth.co.uk)

## First Floor

Approx. 56.3 sq. metres (605.8 sq. feet)



Total area: approx. 56.3 sq. metres (605.8 sq. feet)

This floorplan is for illustration purposes only and is not to scale. The position and size of doors, windows, appliances and other features are approximate.

Score	Energy rating	Current	Potential
92+	A		
81-91	B		
69-80	C	75 C	77 C
55-68	D		
39-54	E		
21-38	F		
1-20	G		

**Deposit: £2,076.92**

**Holding Deposit:**

**Council Tax Band:**

Where no figures are shown, we have been unable to ascertain the information.  
All figures that are shown were correct at the time of printing.