



ST. PETER'S STREET, ISLINGTON, LONDON, N1
£685,000 SHARE OF FREEHOLD

A STUNNING TWO BEDROOM TOP FLOOR FLAT SET MOMENTS FROM UPPER STREET

Highbury | 0207 989 7000 | highbury@winkworth.co.uk

Winkworth

[winkworth.co.uk](https://www.winkworth.co.uk)

See things differently



DESCRIPTION:

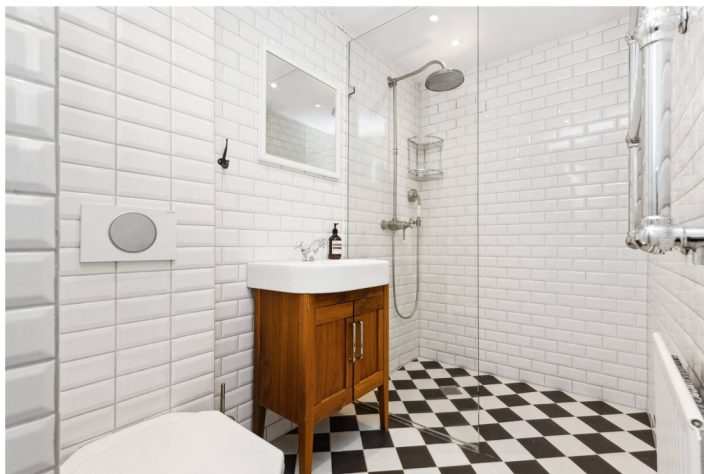
A truly wonderful two bedroom top floor flat set in the heart of St Peters conservation area. The property has been finished to a fantastic standard throughout and boasts wonderfully light rooms and uninterrupted views down Danbury Street. An open plan living room and kitchen provides a fantastic space for entertaining and is adorned with wooden floors and custom cabinetry.

The master bedroom provides inbuilt wardrobes and is bathed in light through sash windows. The shower room has been sympathetically designed with oversized shower and a contemporary tiled finish. Flat roof is also demised to the flat giving potential to create a roof terrace (STPP).

The property has been beautifully finished and tastefully decorated by the current owners and offers convenient living just moments from Upper Street and Angel.

Whilst being located amongst some of Islington's most desirable streets, the flat is also perfectly set for a variety of fantastic restaurants, shops and bars. The nearest underground links are found at Angel station on the Northern line whilst Highbury and Islington is also within easy reach. A variety of bus routes offer effortless access to the City and West End.

Winkworth



Winkworth

St. Peter's Street, N1
Approx. Gross Internal Floor Area 536 sq. ft / 49.75 sq. m



All measurements of walls, doors, windows, fittings and appliances, including their size and location, are shown as standard sizes and do not constitute any warranty or representation by the seller, their agent or CP Creative. Any intending purchaser must satisfy himself by inspection or otherwise as to the correctness of the information contained in these plans. This plan is for illustrative purposes only and should be used as such by any prospective purchasers.

Winkworth

This floorplan is for illustration purposes only and is not to scale. The position and size of doors, windows, appliances and other features are approximate.

Score	Energy rating	Current	Potential
92+	A		
81-91	B		
69-80	C		75 C
55-68	D	56 D	
39-54	E		
21-38	F		
1-20	G		

Highbury | 0207 989 7000 | highbury@winkworth.co.uk

Winkworth

winkworth.co.uk

See things differently

Winkworth wishes to inform prospective buyers and tenants that these particulars are a guide and act as information only. All our details are given in good faith and believed to be correct at the time of printing but they don't form part of an offer or contract. No Winkworth employee has authority to make or give any representation or warranty in relation to this property. All fixtures and fittings, whether fitted or not are deemed removable by the vendor unless stated otherwise and room sizes are measured between internal wall surfaces, including furnishings.