



MYRDLE STREET, LONDON, E1  
'OFFERS IN EXCESS OF' £550,000 LEASEHOLD

## FANTASTIC TWO DOUBLE BEDROOM APARTMENT WITH PRIVATE WEST FACING BALCONY IN CONSERVATION AREA.

Shoreditch | 020 7749 7650 | shoreditch@winkworth.co.uk

**Winkworth**



## DESCRIPTION:

A stylish two double bedroom apartment situated within a contemporary development, on a tree lined residential street near Aldgate East station, and within the Myrdle Street Conservation Area, that benefits from a private west facing balcony, and secure entry system.

Spanning around 750 sqft, the apartment is bright and airy with two good sized double bedrooms, large open-plan kitchen/ reception room, fully tiled bathroom suite, storage cupboard, and a fitted steam room currently used as storage room. The private West facing balcony overlooks the charming period houses and gets beautiful urban view of the sun setting across the city buildings.

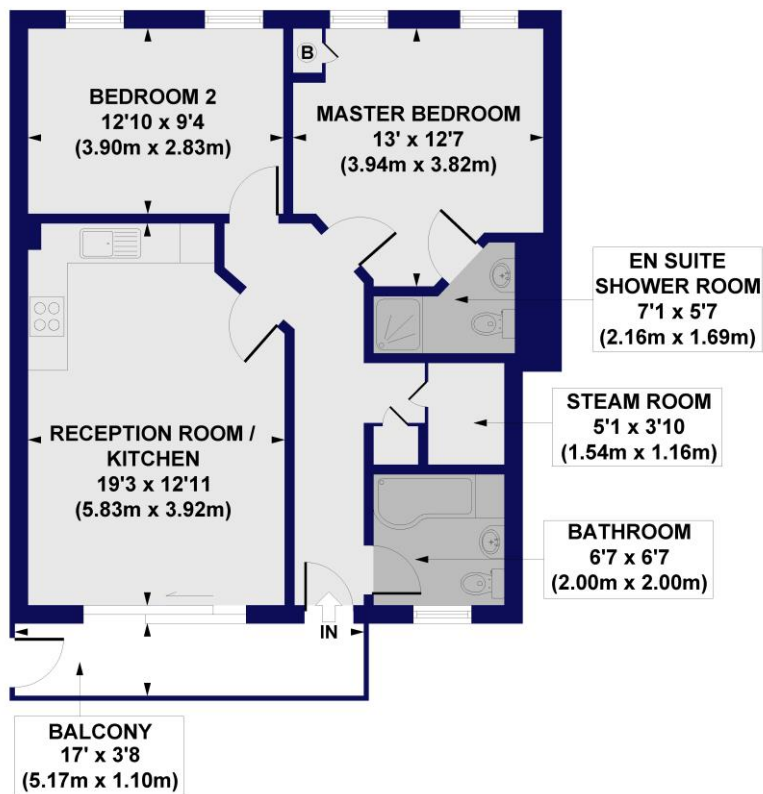
Myrdle Street is ideally located in the centre of Whitechapel/ Aldgate offering fantastic access to both the City and Canary Wharf. You have Aldgate East station and Whitechapel station (Crossrail) as well as Shadwell overground and DLR close by. In addition, there are a wealth of local amenities close by with most notably Brick Lane, Spitalfields Market and large Sainsbury's at a 0.5 miles distance.

**Winkworth**



**Winkworth**

**Montego Court, Myrdle Street, E1**  
**Approx. Gross Internal Floor Area 722 sq. ft / 67.07 sq. m**  
**Approx. Gross External Floor Area 61 sq. ft / 5.69 sq. m**

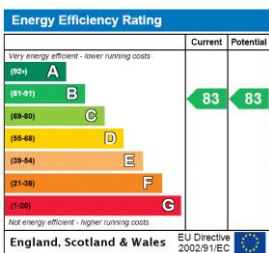


**SECOND FLOOR**

All measurements of walls, doors, windows, fittings and appliances, including their size and location, are shown as standard sizes and do not constitute any warranty or representation by the seller, their agent or CP Creative. Any intending purchaser must satisfy himself by inspection or otherwise as to the correctness of the information contained in these plans. This plan is for illustrative purposes only and should be used as such by any prospective purchasers.



This floorplan is for illustration purposes only and is not to scale. The position and size of doors, windows, appliances and other features are approximate.



Shoreditch | 020 7749 7650 | shoreditch@winkworth.co.uk



winkworth.co.uk

See things differently

Winkworth wishes to inform prospective buyers and tenants that these particulars are a guide and act as information only. All our details are given in good faith and believed to be correct at the time of printing but they don't form part of an offer or contract. No Winkworth employee has authority to make or give any representation or warranty in relation to this property. All fixtures and fittings, whether fitted or not are deemed removable by the vendor unless stated otherwise and room sizes are measured between internal wall surfaces, including furnishings.