



Stanhope Gardens, South Kensington, London, SW7

£923.07 per week* / £4,000 per month – Furnished

A beautifully renovated two bedroom apartment located on the 2nd floor of this attractive, period building.

2 Bedrooms | 1 Reception Room | 2 Bathrooms | Second Floor Flat | 633 Approx sq ft

APPLICANT FEES MAY BE APPLICABLE
DEPOSIT OF 5 WEEKS' RENT
HOLDING DEPOSIT OF 1 WEEK'S RENT

Winkworth

[winkworth.co.uk](https://www.winkworth.co.uk)

for every step...



DESCRIPTION

Refurbished to a high standard throughout, this property offers stylish, contemporary fixtures and fittings, wooden floors and underfloor heating throughout.

Accommodation comprises an open-plan kitchen/reception room with modern, fully fitted kitchen, two double bedrooms with ample built-in wardrobes and two bathrooms (one en-suite).

The apartment further benefits from access to communal gardens (by separate arrangement), and is available from mid-August on a furnished basis.

ACCOMMODATION

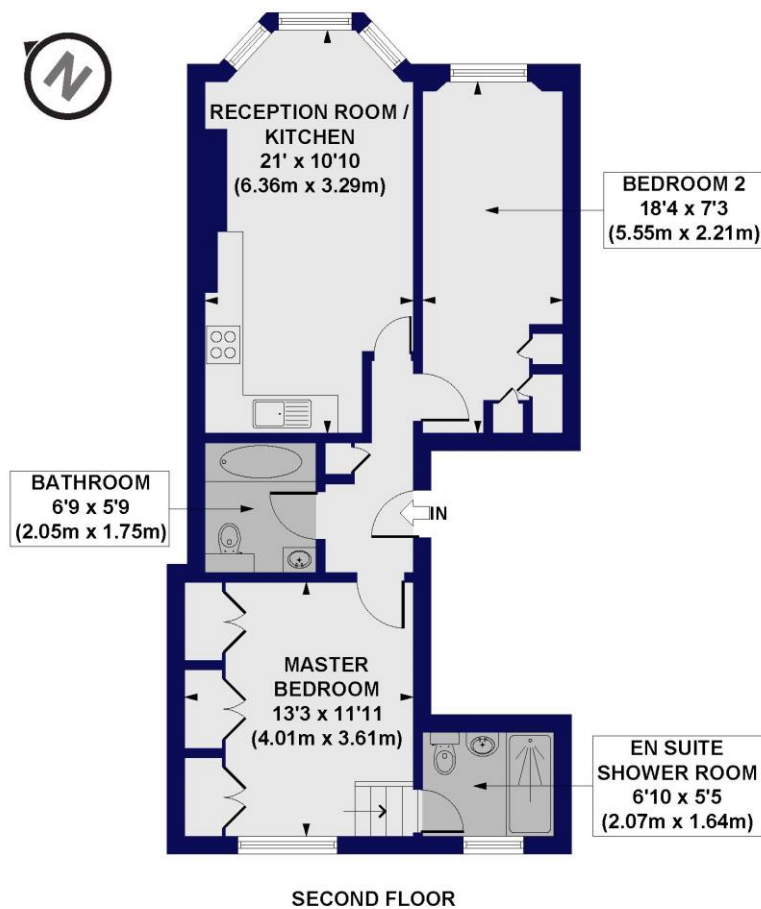
2 Bedrooms, 1 Reception Room, 2 Bathrooms,
Second Floor Flat, Furnished, 633 Approx Sq ft

COUNCIL TAX BAND

Band G



Stanhope Gardens, SW7
Approx. Gross Internal Floor Area 633 sq. ft / 58.85 sq. m



All measurements of walls, doors, windows, fittings and appliances, including their size and location, are shown as standard sizes and do not constitute any warranty or representation by the seller, their agent or CP Creative. Any intending purchaser must satisfy himself by inspection or otherwise as to the correctness of the information contained in these plans. This plan is for illustrative purposes only and should be used as such by any prospective purchasers.

Winkworth

This floorplan is for illustration purposes only and is not to scale. The position and size of doors, windows, appliances and other features are approximate.

**Please note, the rent cannot be paid on a weekly basis*

South Kensington Lettings | 020 7370 6767 | lettings.southken@winkworth.co.uk

winkworth.co.uk

for every step...

Winkworth wishes to inform prospective buyers and tenants that these particulars are a guide and act as information only. All our details are given in good faith and believed to be correct at the time of printing but they don't form part of an offer or contract. No Winkworth employee has authority to make or give any representation or warranty in relation to this property. All fixtures and fittings, whether fitted or not are deemed removable by the vendor unless stated otherwise and room sizes are measured between internal wall surfaces, including furnishings.

Winkworth