



Riviera Drive, Southchurch

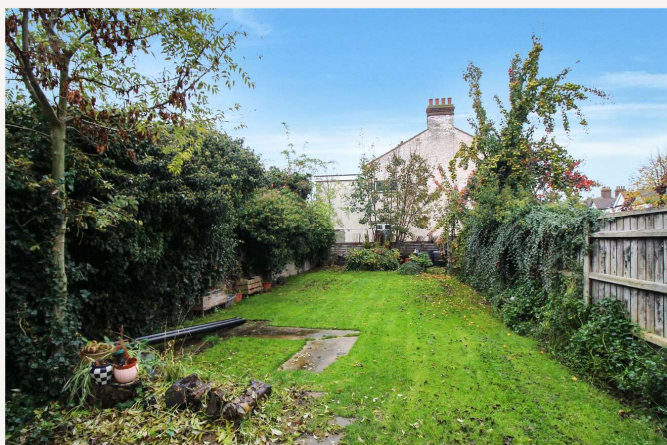
£220,000 *Leasehold*



Charming Period Ground Floor Apartment with 2 bedrooms located in a popular area. This accessible and affordable property boasts a spacious layout, ideal for individuals or small families. The apartment features a lovely garden, perfect for relaxing or entertaining guests.

KEY FEATURES

- Ground Floor Flat
- Two Bedrooms
- Kitchen
- Bathroom
- Large Rear Garden
- Gas Central Heating



Leigh On Sea

01702 470625 | leighonsea@winkworth.co.uk

Winkworth

for every step...



The bedrooms are generously sized, providing a peaceful retreat at the end of the day. Situated in a convenient location, this property is close to local amenities, schools, and transport links, making it a desirable place to call home.

Don't miss out on the opportunity to own this delightful apartment in a prime residential area. Contact us today to arrange a viewing and make this property your own.





ROOM DESCRIPTIONS

Entrance door to: - Entrance hall

Bedroom One: - 17'2 x 17'11. Large bay window to front. Radiator, dado and picture rails. Coving to ceiling with ornate ceiling rose. Wooden flooring.

Bedroom Two: - 12 x 9'4. Window to rear. Radiator and picture rail.

Lounge: - 17'11 x 11'7. French style door to rear with windows to either side. Feature fire place. Dado and picture rails. Coving to ceiling and radiator.

Kitchen: - 8'11 x 8. Window and door to side. Inset stainless steel sink unit. Working surface with base units below and above. Inset electric hob with oven below and extractor above. Space for kitchen appliances

Bathroom: - Two obscure windows to rear. White suite comprising of a bath, wash hand basin set in vanity unit, low level wc. Radiator and tiling to ceiling.

Rear Garden: - A great size garden mainly laid to lawn.

MATERIAL INFO

Tenure: Leasehold

Term: 999 year – new lease

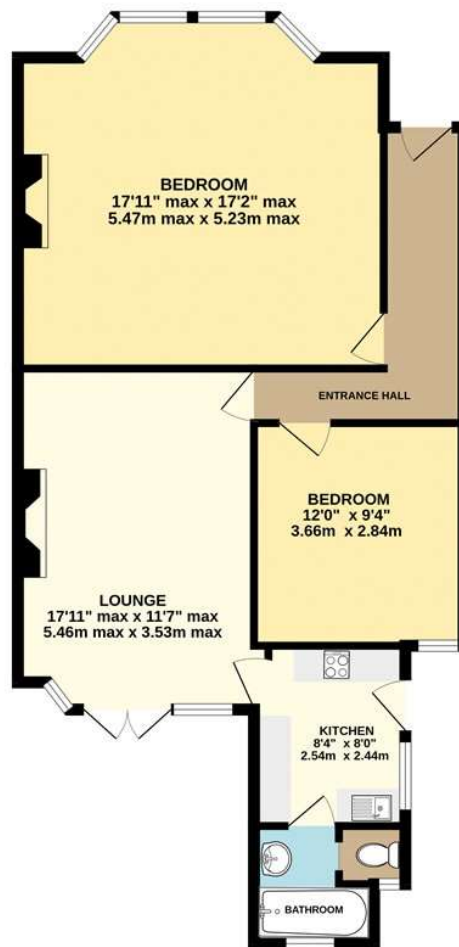
Service Charge: £tba

Ground Rent: £ 0

Council Tax Band: B

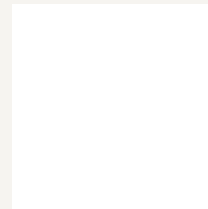
EPC rating: To be confirmed

GROUND FLOOR



Whilst every attempt has been made to ensure the accuracy of the floorplan contained here, measurements of doors, windows, rooms and any other items are approximate and no responsibility is taken for any error, omission or mis-statement. This plan is for illustrative purposes only and should be used as such by any prospective purchaser. The services, systems and appliances shown have not been tested and no guarantee as to their operability or efficiency can be given.
Made with Metropix ©2025

For more information, scan the QR code or visit the link below



<https://www.winkworth.co.uk/sale/property/LOS250163>

Where no figures are shown, we have been unable to ascertain the information. All figures that are shown were correct at the time of printing.

Leigh On Sea

01702 470625 | leighonsea@winkworth.co.uk

Winkworth

for every step...

Winkworth wishes to inform prospective buyers and tenants that these particulars are a guide and act as information only. All our details are given in good faith and believed to be correct at the time of printing but they don't form part of an offer or contract. No Winkworth employee has authority to make or give any representation or warranty in relation to this property. All fixtures and fittings, whether fitted or not are deemed removable by the vendor unless stated otherwise and room sizes are measured between internal wall surfaces, including furnishings.