



## Chepstow Villas, W11

£850 per week (£3,683.33 PCM) *Unfurnished*

1  1  1 

A CHARMING AND IMMACULATE ONE DOUBLE BEDROOM FLAT ON THE FIRST FLOOR (WITH LIFT) OF THIS IMPRESSIVE PERIOD BUILDING ON ONE OF NOTTING HILL'S MOST SOUGHT AFTER ROADS.



**Notting Hill Lettings**

0207 727 3227 | [nottinghill@winkworth.co.uk](mailto:nottinghill@winkworth.co.uk)

**Winkworth**

for every step...





The flat comprises wonderfully bright south facing reception room with French doors, ornamental fire place, separate fully fitted kitchen, very spacious bedroom with fantastic storage and bathroom. This impressive and immaculate presented building further benefits from a lift and is offered unfurnished. Viewing highly recommended.

Chepstow Villas is a sought-after address in the heart of Notting Hill running parallel to Westbourne Grove, and a short walk from the famous Portobello Market.

#### Utilities:

Electricity – Mains

Water – Mains

Sewerage – Mains

Heating – Gas

Broadband <https://checker.ofcom.org.uk/en-gb/broadband-coverage>

Mobile Coverage <https://checker.ofcom.org.uk/en-gb/mobile-coverage>

#### MATERIAL INFO

**Deposit:** £4,250

**Holding Deposit:** £850

**Council Tax Band:** G (RBKC)

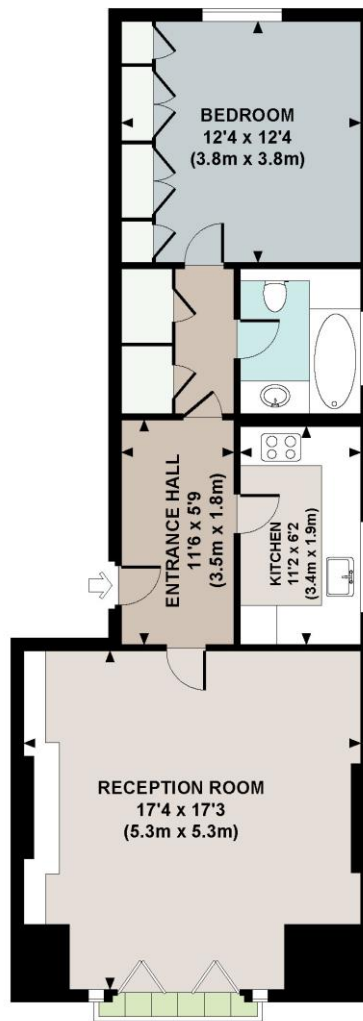






## CHEPSTOW VILLAS, W11

Approx. gross internal area  
694 Sq.Ft. / 64.5 Sq.M.

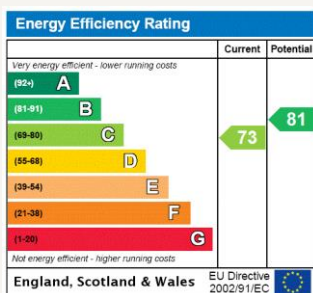


FIRST FLOOR



All measurements are approximate and for illustration purposes only as defined by the RICS Code of Measuring Practice © 2013  
Dowling Jones Design www.dowlingjones.com 020 7610 9933

For more information, scan the QR code or visit the link below



<https://www.winkworth.co.uk/rent/property/NHL200021>

Where no figures are shown, we have been unable to ascertain the information. All figures that are shown were correct at the time of printing.

Notting Hill Lettings

0207 727 3227 | [nottinghill@winkworth.co.uk](mailto:nottinghill@winkworth.co.uk)

**Winkworth**

for every step...

Winkworth wishes to inform prospective buyers and tenants that these particulars are a guide and act as information only. All our details are given in good faith and believed to be correct at the time of printing but they don't form part of an offer or contract. No Winkworth employee has authority to make or give any representation or warranty in relation to this property. All fixtures and fittings, whether fitted or not are deemed removable by the vendor unless stated otherwise and room sizes are measured between internal wall surfaces, including furnishings.