



Westwood Avenue, SE19

£1,000,000 *Freehold*

5  2  3 

Winkworth is pleased to offer to the market this lovely 5-bedroom detached property with a large private garden for sale on the quiet residential Westwood Avenue.

KEY FEATURES

- 5 generous bedrooms
- 2 reception rooms, 3 family bathrooms
- Freehold
- Gorgeous parquet flooring
- Expansive garden
- Garage



Crystal Palace

02038693222 | crystalpalace@winkworth.co.uk

Winkworth

for every step...



The property comprises; five generous bedrooms, 3 family bathrooms, a large study, two spacious open-plan reception rooms and dining room, a garage, and an expansive manicured garden. Throughout the property there is gorgeous parquet flooring and an abundance of natural light. With further planning permission having been granted recently, the potential to make this your forever home is endless!

Set on a quiet, residential no-through road moments from Harris Academy, the property benefits from its closeness to the popular green spaces of Beaulieu Height, South Norwood Lake & Grounds, Grangewood Park, and The Lawns. Residents also have an array of local amenities to enjoy with the Crystal Palace Triangle a short walk away.





MATERIAL INFO

Tenure: Freehold
EPC rating: D

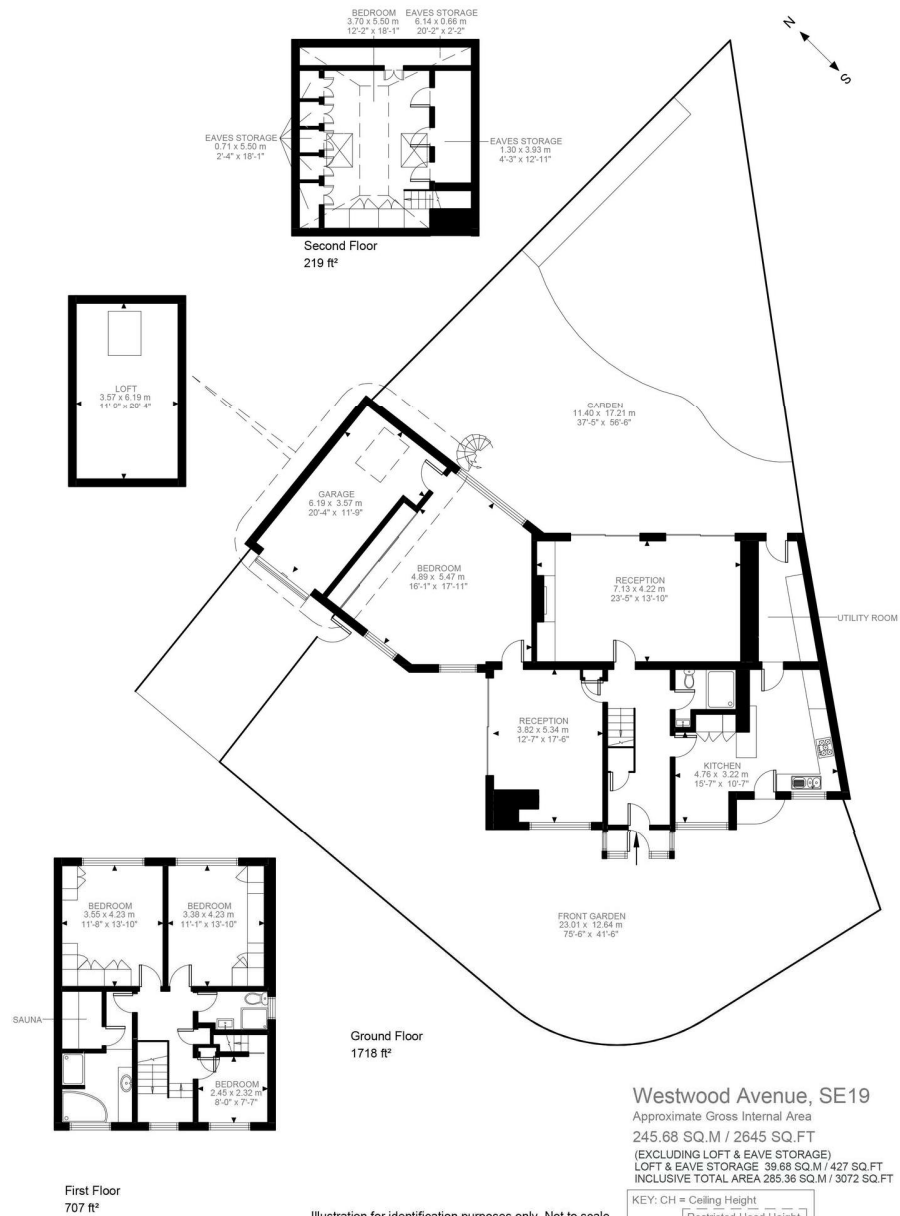
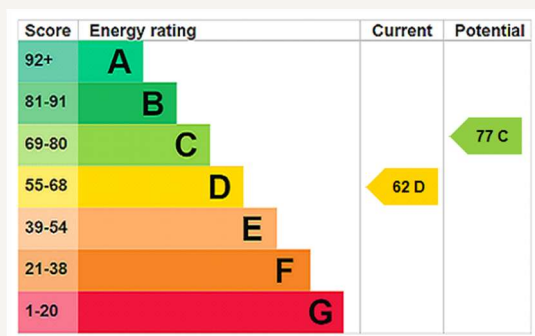


Illustration for identification purposes only. Not to scale.
Floor Plan Drawn According To RICS Guidelines.



Crystal Palace

02038693222 | crystalpalace@winkworth.co.uk

Winkworth

for every step...

Winkworth wishes to inform prospective buyers and tenants that these particulars are a guide and act as information only. All our details are given in good faith and believed to be correct at the time of printing but they don't form part of an offer or contract. No Winkworth employee has authority to make or give any representation or warranty in relation to this property. All fixtures and fittings, whether fitted or not are deemed removable by the vendor unless stated otherwise and room sizes are measured between internal wall surfaces, including furnishings.