



## Colville Gardens, W11

£669.23 per week (£2,900.00 pcm) *Part Furnished*



A very spacious two-bedroom, two bathroom flat on the raised ground floor of this impressive period building in this highly sort after location in the heart of Notting Hill.

- 2 Bedrooms
- 2 bathrooms
- 1 Reception Room
- Separate fully equipped kitchen
- Part Furnished



**Notting Hill Lettings**

0207 727 3227 | [nottinghill@winkworth.co.uk](mailto:nottinghill@winkworth.co.uk)

**Winkworth**

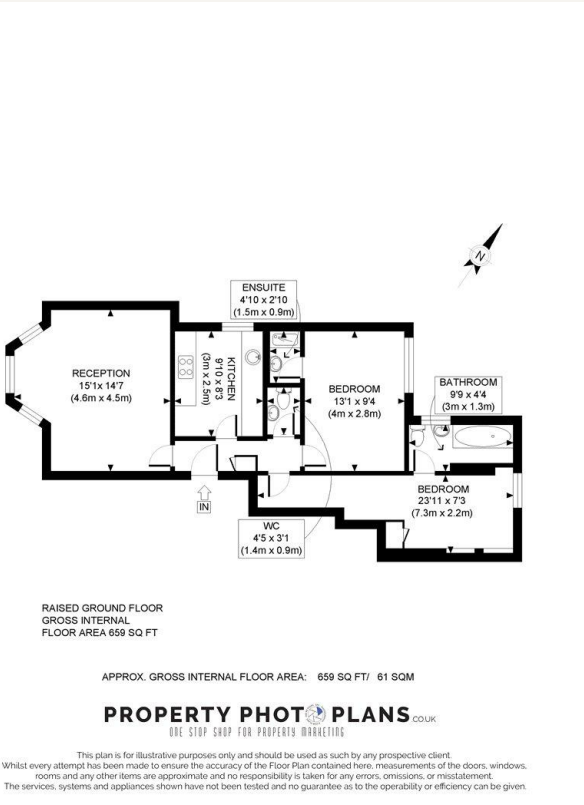
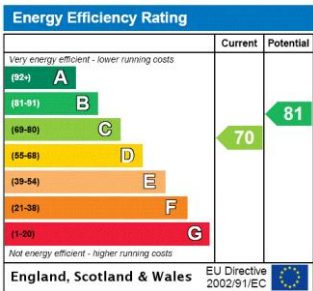
for every step...

A very bright two-bedroom flat with high ceilings and 2 bathrooms on raised-ground-floor of a fully refurbished Victorian house with great-looking and well-maintained common parts (including red-carpeted stair-case and planted front garden), good security, fully repainted, great location near Notting Hill's Portobello Road, restaurants, shops and transport, hardwood flooring throughout, fully well-equipped kitchen including water softener and separate dryer, gas central heating with room thermostat, picture-rails throughout for hanging pictures, voile-net-curtains and neutral-colour top-quality curtains with blackout lining, high-security doors & locks, private bicycle-parking in vaults under the front-garden, part-furnished as per above, good and flexible professional landlord.

Utilities:  
Electricity – Mains  
Water – Mains  
Sewerage – Mains  
Heating – Gas  
Broadband <https://checker.ofcom.org.uk/en-gb/broadband-coverage>  
Mobile Coverage <https://checker.ofcom.org.uk/en-gb/mobile-coverage>

LOCATION

Colville Gardens is a peaceful tree lined cul de sac at the heart of Notting Hill which runs north from Colville Terrace, just behind the fashionable stretch of Westbourne Grove.



MATERIAL INFO

Deposit: £3,346  
Holding Deposit: £669  
Council Tax Band: D (RBKC)

For more information, scan the QR code or visit the link below



<https://www.winkworth.co.uk/rent/property/NHS250040>

Where no figures are shown, we have been unable to ascertain the information. All figures that are shown were correct at the time of printing.

Notting Hill Lettings  
0207 727 3227 | [nottinghill@winkworth.co.uk](mailto:nottinghill@winkworth.co.uk)



Winkworth wishes to inform prospective buyers and tenants that these particulars are a guide and act as information only. All our details are given in good faith and believed to be correct at the time of printing but they don't form part of an offer or contract. No Winkworth employee has authority to make or give any representation or warranty in relation to this property. All fixtures and fittings, whether fitted or not are deemed removable by the vendor unless stated otherwise and room sizes are measured between internal wall surfaces, including furnishings.