

IVES STREET | SW3



Winkworth



Ives Street SW3

RENT: £7,000pcm / £1,616pw.

- 4 Bedroom House
- 4 Bathrooms
- Unfurnished
- Long Let
- Excellent Transport Links
- Newly Decorated
- Underfloor Heating
- Airconditioning
- Integrated Garage
- Residents Parking



LOCAL AUTHORITY: Royal Borough of Kensington & Chelsea

COUNCIL TAX BAND: Band H

EPC: Exempt

Knightsbridge & Chelsea | 020 7589 6616
knightsbridge@winkworth.co.uk

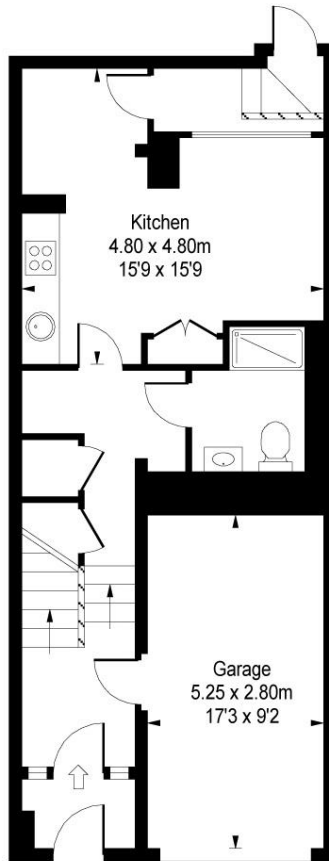
Winkworth

for every step...

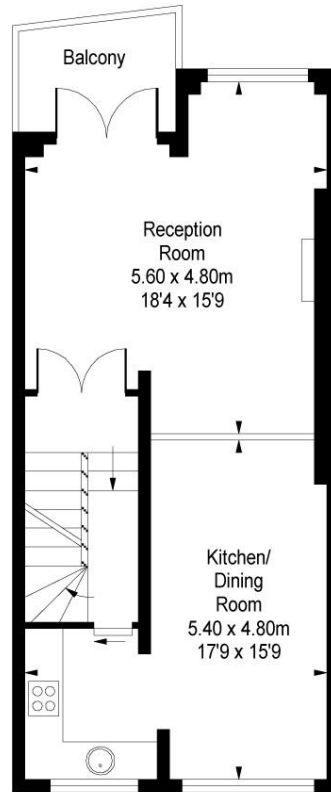
winkworth.co.uk

Winkworth wishes to inform prospective buyers and tenants that these particulars are a guide and act as information only. All our details are given in good faith and believed to be correct at the time of printing but they don't form part of an offer or contract. No Winkworth employee has authority to make or give any representation or warranty in relation to this property. All fixtures and fittings, whether fitted or not are deemed removable by the vendor unless stated otherwise and room sizes are measured between internal wall surfaces, including furnishings.

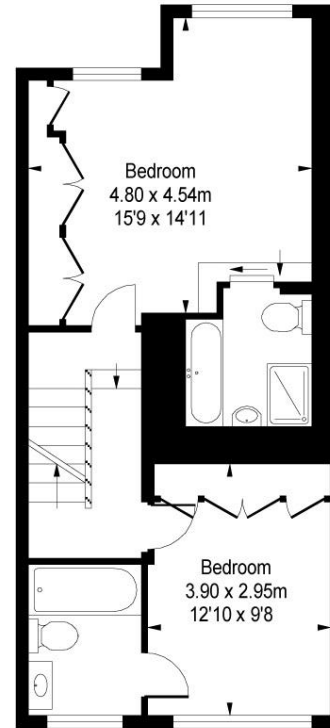
Ives Street, SW3 2ND
Approximate Gross Internal Area
2014 sq ft / 187.05 sq m
Including Garage



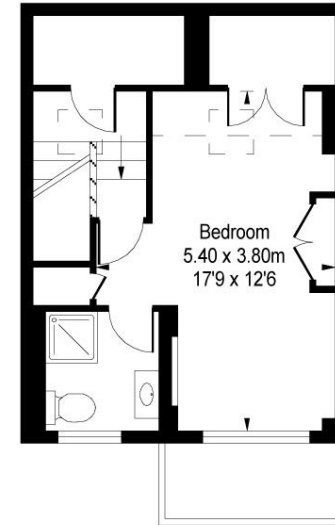
Ground Floor
Approximate Gross Internal Area
605 sq ft / 56.17 sq m



First Floor
Approximate Gross Internal Area
545 sq ft / 50.60 sq m



Second Floor
Approximate Gross Internal Area
527 sq ft / 49.00 sq m



Third Floor
Approximate Gross Internal Area
337 sq ft / 31.28 sq m

ILLUSTRATION FOR IDENTIFICATION PURPOSES ONLY

ALL MEASUREMENTS ARE MAXIMUM, AND INCLUDE WINDOW BAYS AND WARDROBES WHERE APPLICABLE
THIS PLAN MUST NOT BE REPRODUCED BY ANY OTHER PERSON WITHOUT PERMISSION