



Ashley Close, Winchester, Hampshire, SO22 6LR



Ashley Close, Winchester, Hampshire, SO22 6LR

Well-Presented Bungalow in Peaceful Location with No Forward Chain

A superb two-bedroom bungalow offering spacious, light-filled accommodation throughout, in a peaceful cul-de-sac location. Ashley Close is conveniently positioned for easy access to the local amenities including Waitrose, Aldi, the doctors' surgery, pharmacy, newsagents, bus stop (at the end of the Close) and schools.

The spacious hallway first gives access to the kitchen to the front of the property. The kitchen has a wonderful, contemporary feel to it and has been fitted with sleek units that have been designed with the user in mind, making it more accessible without compromising on style. Integrated appliances include oven, gas hob, extractor, microwave and fridge/freezer, with a built-in water softener, free-standing dishwasher and washer/dryer also included in the sale.

Beyond the kitchen is a generous sitting room with gas feature fireplace and views over the pretty, well-stocked garden courtesy of double doors and large, full-height windows. The principal bedroom to the rear has a built-in wardrobe and also enjoys views of the garden. The second bedroom and modern bathroom with bath and shower over complete the internal accommodation.

Outside to the front there is an attractive, open-plan garden with shrubs and lawn. To the rear is an appealing, well-tended garden which is enclosed and provides a good degree of privacy. A patio lies directly behind the bungalow with an additional paved seating area to the rear while the remainder of the garden is laid to lawn. There is a useful storage unit and a gate provides rear access. The property has a garage in a block just across the road.





Ashley Close, Winchester, Hampshire, SO22 6LR

Directions

From the Winkworth office in Winchester, proceed to the end of Southgate Street, turning left into High Street. At the mini roundabout, take the second exit into Upper High Street and turn left over the railway bridge. At the mini roundabout, turn right and proceed onto Stockbridge Road. Follow Stockbridge Road to the mini roundabout, turning right into Bereweke Road. Take the third left into Bereweke Avenue and proceed straight over Stoney Lane. Proceed along Priors Dean Road, turning left onto Bradley Road. Take the sixth turning on the right into Ashley Close and the property is on your right.

Location

Ashley Close is conveniently situated for local shops and bus routes into the centre of Winchester with its mainline railway station (links to London Waterloo in about 60 minutes), high street shops, boutiques, library, coffee shops, public houses, restaurants, theatre, cinema, museums and, of course, the City's historic cathedral. The M3 motorway and A34 are also easily accessible. The property is within catchment for Harestock Primary and Henry Beaufort Secondary Schools and just a short distance to the highly acclaimed Peter Symonds Sixth Form College.

Tenure: Freehold

Services

Mains gas, electricity, water and drainage

Winchester City Council

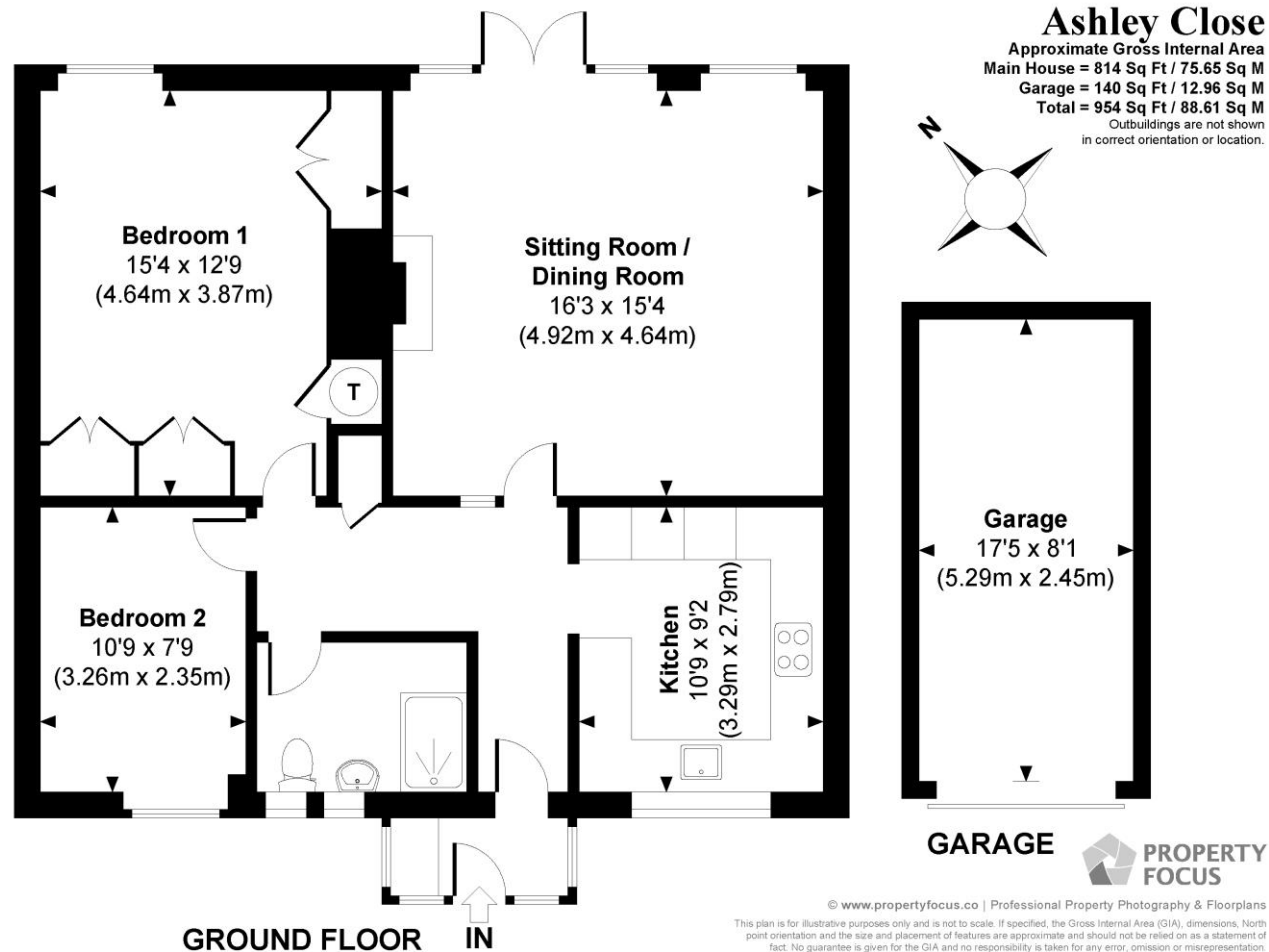
Council tax band: C

EPC rating: C

Viewings

Strictly by appointment with Winkworth Winchester Office

Winkworth.co.uk/winchester



Winkworth Winchester

2 Black Swan Buildings, Southgate Street, Winchester, SO23 9DT
01962 866 777 | winchester@winkworth.co.uk

Winkworth Country House Department

13 Charles II Street, St James's, London, SW1Y 4QU
020 7870 4878 | countryhouse@winkworth.co.uk

Winkworth

See things differently