



**CORNWALL GARDENS, WILLESDEN GREEN, LONDON, NW10**  
**£3,250 PER MONTH UNFURNISHED**

## **FAMILY FOUR BEDROOM HOME WITH PRIVATE GARDEN.**

Kensal Rise & Queens Park | 0208 960 4947 | [kensalrise@winkworth.co.uk](mailto:kensalrise@winkworth.co.uk)

**Winkworth**

for every step...

[winkworth.co.uk](http://winkworth.co.uk)



**DESCRIPTION:**

This family home was fully decorated and re-carpeted in 2020. Set over two floors, comprising of three double bedrooms on the first floor and one on the ground floor, a separate bay fronted reception room, two bathrooms and eat-in kitchen to the rear of the property.

Additional features include a private garden, utility room and is offered unfurnished.

Council tax - (Band D)

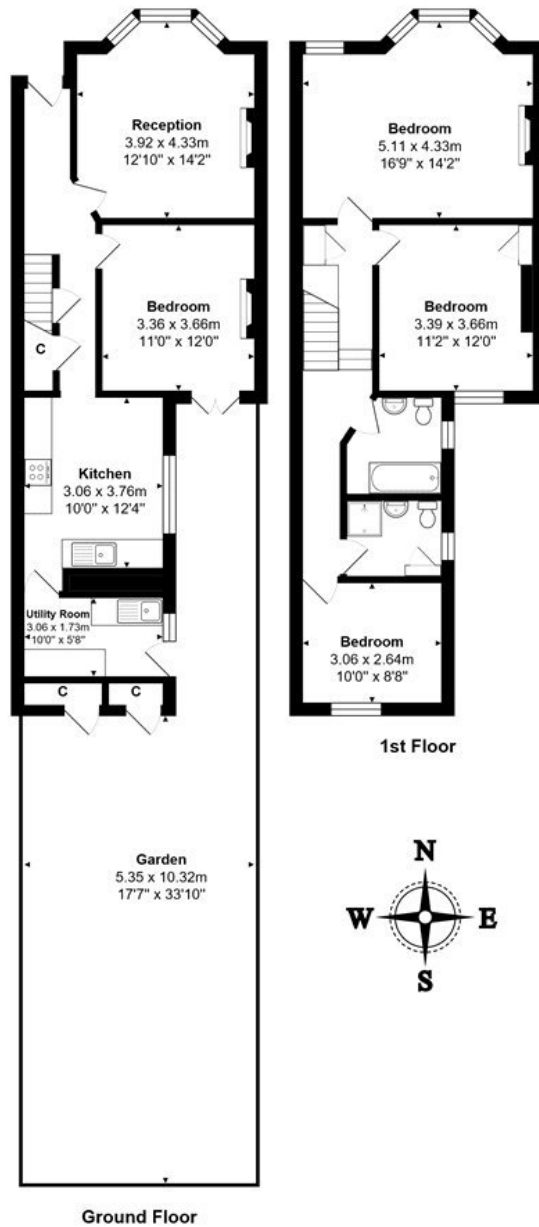
Ward - Willesden Green

Controlled Parking Zone

8.30 am - 6.30 pm Mon. - Fri.







Total Area: 119.8 m<sup>2</sup> ... 1289 ft<sup>2</sup> (excluding garden)  
 All measurements are approximate and for display purposes only

This floorplan is for illustration purposes only and is not to scale. The position and size of doors, windows, appliances and other features are approximate.

**Deposit:** 5 weeks rent

**Holding Deposit:** 1 weeks rent

**Council Tax Band:** D

Where no figures are shown, we have been unable to ascertain the information. All figures that are shown were correct at the time of printing.

Energy Efficiency Rating		Current	Potential
Very energy efficient - lower running costs			
(92-100)	A		
(81-91)	B		
(69-80)	C		76
(55-68)	D	55	
(39-54)	E		
(21-38)	F		
(1-20)	G		
Not energy efficient - higher running costs			
England, Scotland & Wales		EU Directive 2002/91/EC	



Kensal Rise & Queens Park | 0208 960 4947 | kensalrise@winkworth.co.uk

for every step...

winkworth.co.uk

Winkworth wishes to inform prospective buyers and tenants that these particulars are a guide and act as information only. All our details are given in good faith and believed to be correct at the time of printing but they don't form part of an offer or contract. No Winkworth employee has authority to make or give any representation or warranty in relation to this property. All fixtures and fittings, whether fitted or not are deemed removable by the vendor unless stated otherwise and room sizes are measured between internal wall surfaces, including furnishings.