

## ORDNANCE MEWS, NW8 £2,150,000 FREEHOLD

A charming 4 bedroom (1561 sq ft/145 sq m) house, located in a tucked away position adjacent to St John's Wood High Street. This terraced property benefits from well-proportioned rooms and includes a secure off-street parking space and a patio garden.

Ordnance Mews is located at the top of St John's Wood High Street, with its cafes, boutiques and restaurants. The property is located 0.1 miles from St John's Wood Underground Station (Jubilee Line) which provides access to the West End and Canary Wharf.

Principle Bedroom with En-Suite Bathroom | Three Further Bedrooms | Bathroom | Reception Room | Open Plan Kitchen Dining Room | Guest WC | Private Patio | Off Street Parking for One Car | Freehold

**Winkworth**

for every step...

[winkworth.co.uk/st-johns-wood](https://www.winkworth.co.uk/st-johns-wood)





# Ordnance Mews, NW8

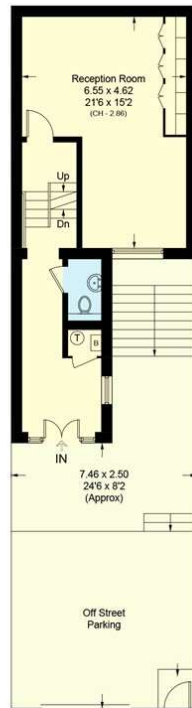
Approximate Area = 145.1 sq m / 1561 sq ft  
Including Limited Use Area (2.1 sq m / 23 sq ft)



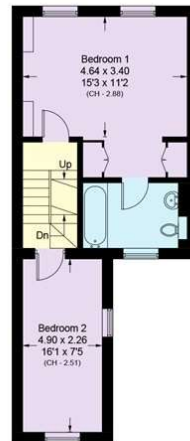
 = Reduce head height below 1.5m



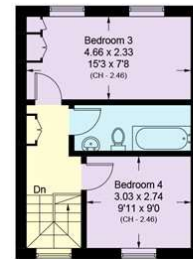
**Lower Ground Floor**  
Approximate Area = 30.2 sq m / 325 sq ft  
Including Limited Use Area (2.1 sq m / 23 sq ft)



**Ground Floor**  
Approximate Area = 42.4 sq m / 456 sq ft

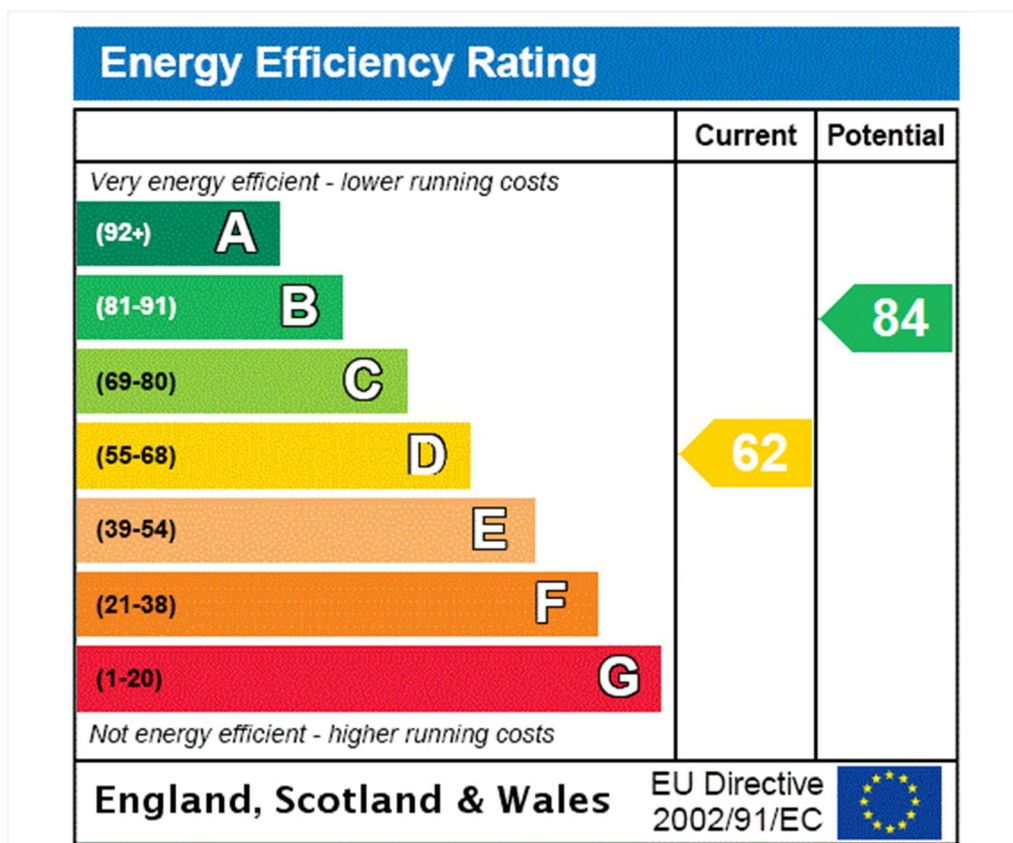


**First Floor**  
Approximate Area = 42.1 sq m / 453 sq ft



**Second Floor**  
Approximate Area = 30.4 sq m / 327 sq ft

Surveyed and drawn in accordance with the International property measurements standards (IPMS 2: Residential) Not drawn to scale unless stated.  
Whilst every care is taken in the preparation of this plan, please check all dimensions, shapes and compass bearings before making any decisions reliant upon them.



**Tenure:** Freehold

**Council Tax Band:** H

Where no figures are shown, we have been unable to ascertain the information. All figures that are shown were correct at the time of printing.

Where no figures are shown, we have been unable to ascertain the information. All figures that are shown were correct at the time of printing. These particulars are not an offer or contract, nor part of one. You should not rely on statements by Winkworth in the particulars or by word of mouth or in writing "information" as being factually accurate about the property, its condition or its value. Winkworth does not have any authority to make any representations about the property, and accordingly any information given is entirely without responsibility on the part of the agents, seller(s) or lessor(s). These particulars are prepared on the basis of the information supplied by our client and are a rough guide for information only. The photographs show only certain parts of the property. We are not able to check all of the information and therefore are unable to guarantee accuracy. All interested parties are therefore advised to undertake all necessary inspections and checks that they deem appropriate. Where displayed, the square footage is taken from the floor plans, which are created by an independent supplier. These measurements are approximate and included for illustrative purposes only. The measurements may vary. Winkworth does not make any representation as to the accuracy of these measurements and you should seek to verify them for yourself. Winkworth accept no liability for any loss you may suffer if you rely on these measurements. All fixtures and fittings, whether fitted or not are deemed removable by the vendor unless stated. Any reference to alterations to, or use of, any part of the property does not mean that any necessary planning, building regulations or other consent has been obtained. Amenities and appliances have not been tested

**Winkworth**

St John's Wood | 103-104 St. Johns Wood Terrace, London, NW8 6PL | 020 7586 7001 | [stjohnswood@winkworth.co.uk](mailto:stjohnswood@winkworth.co.uk)

for every step...

[winkworth.co.uk/st-johns-wood](http://winkworth.co.uk/st-johns-wood)

Winkworth wishes to inform prospective buyers and tenants that these particulars are a guide and act as information only. All our details are given in good faith and believed to be correct at the time of printing but they don't form part of an offer or contract. No Winkworth employee has authority to make or give any representation or warranty in relation to this property. All fixtures and fittings, whether fitted or not are deemed removable by the vendor unless stated otherwise and room sizes are measured between internal wall surfaces, including furnishings.