



LORDSHIP LANE, EAST DULWICH, LONDON, SE22
£550,000 LEASEHOLD

A BEAUTIFULLY PRESENTED TWO-BEDROOM
GROUND FLOOR GARDEN MAISONETTE SITUATED IN
THE CENTRE OF EAST DULWICH ON LORDSHIP LANE.

Dulwich | 020 8299 2722 | dulwich@winkworth.co.uk

Tenure Leasehold 113yrs approx. remaining | Council Tax Band B – London Borough of Southwark | Service Charge £838 pa | Ground Rent £200 pa

Winkworth

winkworth.co.uk

See things differently



DESCRIPTION:

A beautifully presented two-bedroom ground floor garden maisonette situated in the centre of East Dulwich on Lordship Lane. The property offers a modern kitchen, reception with doors out onto a private garden, two double bedrooms with built-in wardrobes in the master bedroom and a modern bathroom. The property is situated in a fantastic location close to the bars, restaurants on Lordship Lane but also with easy access into transport links provided via East Dulwich into London Bridge. Lordship Lane offers many different eating and drinking options as well as the new cinema and plenty of independent shops. Transport links are provided via East Dulwich for direct links to London Bridge, Denmark Hill for the overground or Forest Hill for the East London overground services.

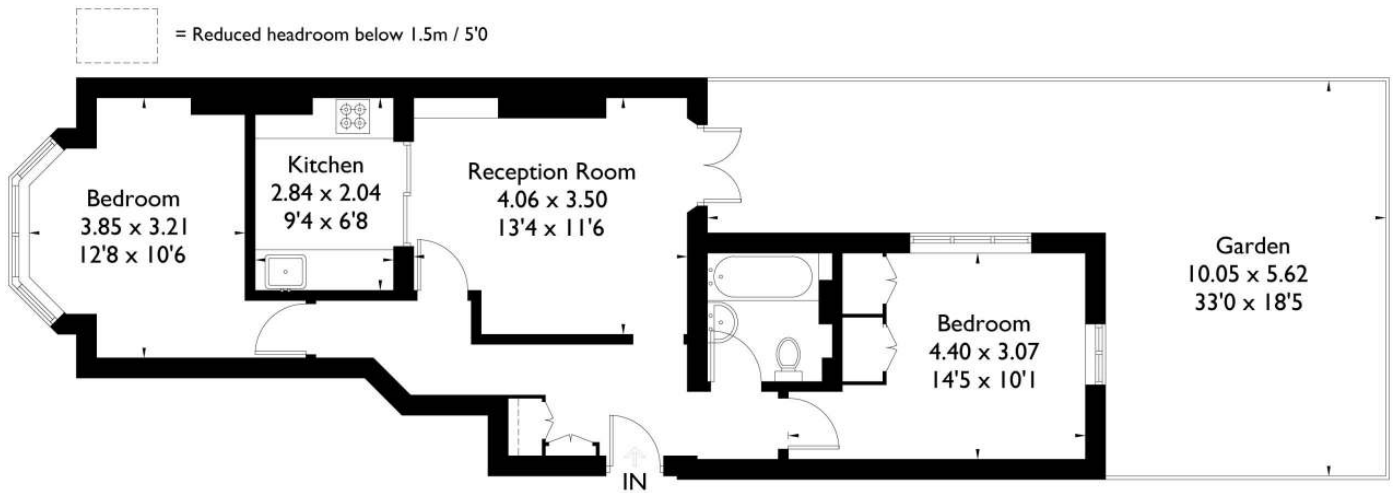
AT A GLANCE

- Two Double Bedrooms
- Ground Floor Maisonette
- Leasehold
- Modern Kitchen & Bathroom
- Private Garden
- Excellent Location
- Walking Distance to Dulwich Park



Lordship Lane, East Dulwich, SE22

Approximate Gross Internal Area = 58.9 sq m / 634 sq ft



FLOORPLANZ © 2015 0845 6344080 Ref: 146339

This plan is for layout guidance only. Drawn in accordance with RICS guidelines. Not drawn to scale unless stated. Windows & door openings are approximate. Whilst every care is taken in the preparation of this plan, please check all dimensions, shapes & compass bearings before making any decisions reliant upon them.

This floorplan is for illustration purposes only and is not to scale. The position and size of doors, windows, appliances and other features are approximate.

Dulwich | 020 8299 2722 | dulwich@winkworth.co.uk

Winkworth

winkworth.co.uk

See things differently

Winkworth wishes to inform prospective buyers and tenants that these particulars are a guide and act as information only. All our details are given in good faith and believed to be correct at the time of printing but they don't form part of an offer or contract. No Winkworth employee has authority to make or give any representation or warranty in relation to this property. All fixtures and fittings, whether fitted or not are deemed removable by the vendor unless stated otherwise and room sizes are measured between internal wall surfaces, including furnishings.