



HARTFIELD ROAD, SW19
£650,000 SHARE OF FREEHOLD

DESCRIPTION:

Located in the heart of Wimbledon, this delightful 2 bedroom 2 bathroom maisonette offers beautifully presented living space with stunning period features and stylish interiors. The property features 2 well proportioned double bedrooms, bright open plan living space with large windows, a spacious main bathroom and built in storage. This apartment also offers a lovely private enclosed garden and off street parking fully installed with an electric car charging point.

Wimbledon | 02037614040 | wimbledon@winkworth.co.uk

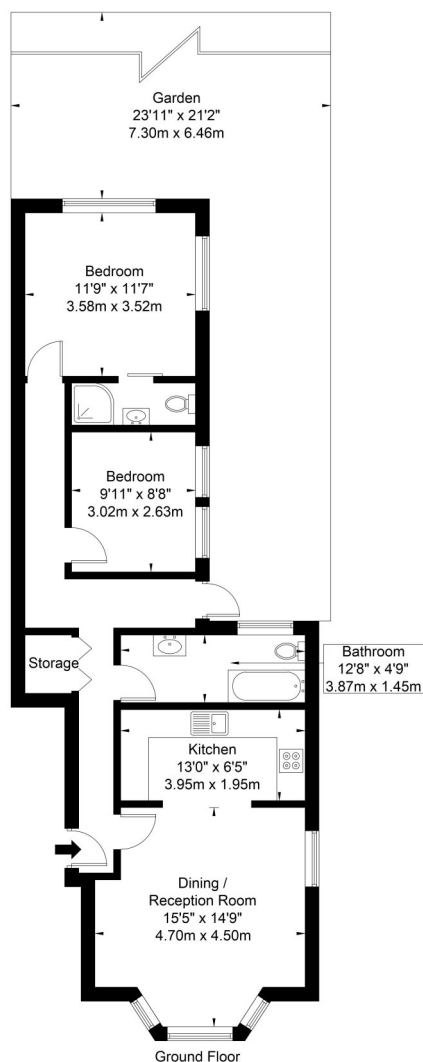
Winkworth

for every step...

winkworth.co.uk

Hartfield Road, SW19 3TG

Approx. Gross Internal Area = 72.0 sq m / 775 sq ft



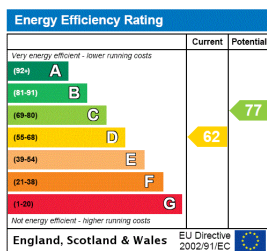
Ref

Copyright

**BLEU
PLAN**

The Floor plan is not to scale and measurements and areas shown are approximate and therefore should be used for illustrative purposes only. The plan has been prepared in accordance with the RICS code of Measuring Practice and whilst we have confidence in the information produced it must not be relied on. If there is any aspect of particular importance, you should carry out or commission your own inspection of the property.
Copyright @ BLEUPLAN

This floorplan is for illustration purposes only and is not to scale. The position and size of doors, windows, appliances and other features are approximate.



Wimbledon | 02037614040 | wimbledon@winkworth.co.uk

Winkworth

for every step...

winkworth.co.uk

winkworth wishes to inform prospective buyers and tenants that these particulars are a guide and act as information only. All our details are given in good faith and believed to be correct at the time of printing but they don't form part of an offer or contract. No winkworth employee has authority to make or give any representation or warranty in relation to this property. All fixtures and fittings, whether fitted or not are deemed removable by the vendor unless stated otherwise and room sizes are measured between internal wall surfaces, including furnishings.