



- 5 Spacious Double Bedrooms
- Downstairs Bedroom and Shower Room
- Within Catchment of Highly Rated Schools
- Close to Several Transport Amenities & Places of Worship
- Off Street Parking
- Double Garage to the rear

KENTON ROAD, HA3  
OIEO £700,000 FREEHOLD

## 5 BEDROOM SEMI DETACHED FAMILY HOME

Kingsbury | 020 8204 0000 | kingsbury@winkworth.co.uk

**Winkworth**

for every step...

*winkworth.co.uk*





Winkworth

**DESCRIPTION:** A much loved five bedroom semi-detached family home. Making an appearance for the first time in 35 years, this lovely five bedroom home offers spacious living with plenty of natural light throughout. The ground floor has a versatile front room currently being used as a bedroom with characterful wood floors and a large bay window. There is a through lounge with an open plan kitchen offering immense family space. Complimenting the ground floor is a double bedroom with a shower room and a utility area with access to a generous sized rear garden and a double garage. The first floor accommodates three good sized rooms, a further utility area. The loft consists of a spacious room with an ensuite. Externally, there is off street parking. Located on a sought after road, this First Time Buyer's dream is situated within the catchment of highly rated schools. Amenities of Kingsbury are within walking distance including local shops, supermarkets, places of worship, eateries, bus routes. A viewing is a MUST



Winkworth



Winkworth

Winkworth

for every step...



**Winkworth**  
for every step...

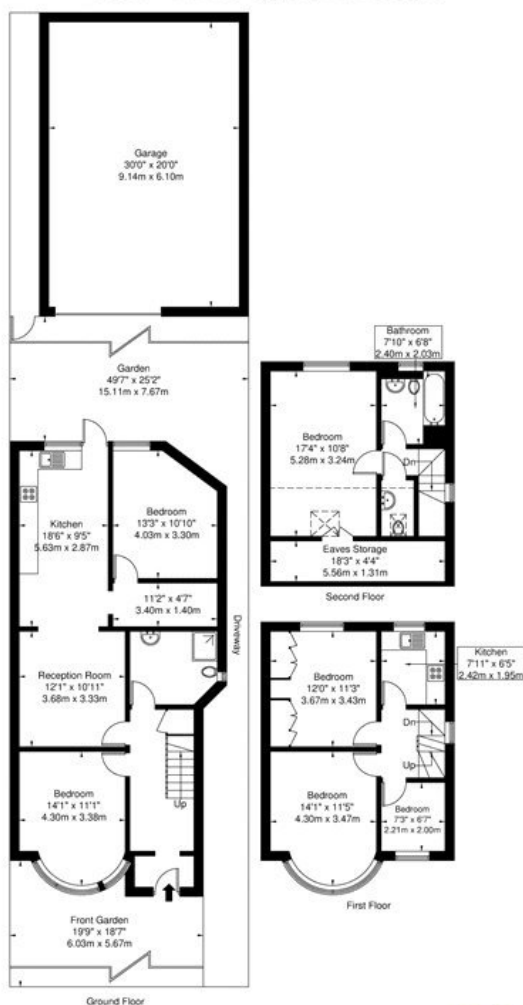


# Kenton Road Harrow HA3 9NR

Approx. Gross Internal Area = 168.7 sq m / 1816 sq ft (Including Eaves)

Garage = 55.8 sq m / 600 sq ft

Total = 224.5 sq m / 2416 sq ft



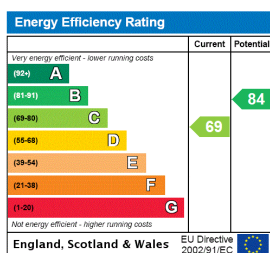
Ref

Copyright **BLEUPLAN**

The Floor plan is not to scale and measurements and areas shown are approximate and therefore should be used for illustrative purposes only. The plan has been prepared in accordance with the RICS code of Measuring Practice and whilst we have confidence in the information produced it must not be relied on. If there is any aspect of particular importance, you should carry out or commission your own inspection of the property.

Copyright © BLEUPLAN

This floorplan is for illustration purposes only and is not to scale. The position and size of doors, windows, appliances and other features are approximate.



Kingsbury | 020 8204 0000 | kingsbury@winkworth.co.uk

**Winkworth**

for every step...

winkworth.co.uk

Winkworth wishes to inform prospective buyers and tenants that these particulars are a guide and act as information only. All our details are given in good faith and believed to be correct at the time of printing but they don't form part of an offer or contract. No Winkworth employee has authority to make or give any representation or warranty in relation to this property. All fixtures and fittings, whether fitted or not are deemed removable by the vendor unless stated otherwise and room sizes are measured between internal wall surfaces, including furnishings.