

FLAT 30, THURLOE COURT, FULHAM ROAD, LONDON, SW3
£1,950,000 TO BE ADVISED

A BEAUTIFUL 2 BEDROOM APARTMENT FINISHED TO A HIGH STANDARD

Knightsbridge & Chelsea | 0207 589 6616 | knightsbridge@winkworth.co.uk

Winkworth

for every step...

winkworth.co.uk



DESCRIPTION:

This exquisite two-bedroom, two-bathroom lateral apartment is located on the third floor of the sought-after Thurloe Court, with lift access and views overlooking the picturesque Pelham Crescent on Fulham Road. Finished to the highest standard, the property features two generously sized double bedrooms, each with built-in wardrobes and luxurious en-suite bathrooms with marble finishes. There is also a guest cloakroom, a separate modern kitchen, and a spacious reception room with windows offering views of Pelham Crescent. The apartment boasts elegant wooden flooring throughout and is offered with a long



Winkworth

for every step...



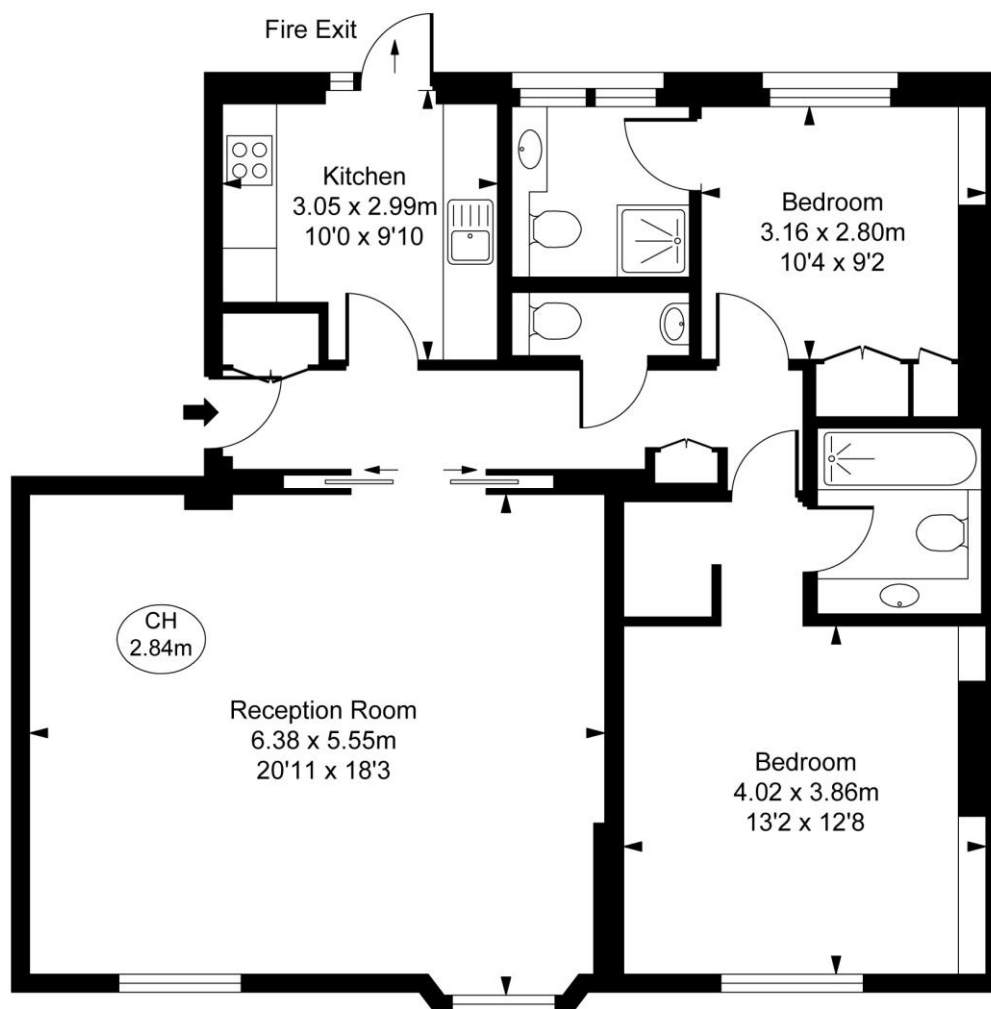
Winkworth

for every step...

winkworth.co.uk



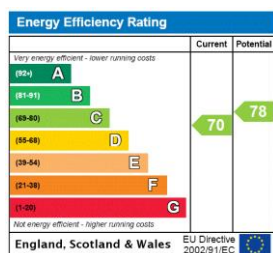
Thurloe Court,
Fulham Road, SW3
Approximate Gross Internal Area
93.44 sq m / 1,006 sq ft
(CH = Ceiling Heights)



Third Floor

This plan is not to scale. It is for guidance and not for valuation purposes.
All measurements and areas are approximate only, and have been prepared in accordance with the current edition of the RICS Code of Measuring Practice.
© Fulham Performance

This floorplan is for illustration purposes only and is not to scale. The position and size of doors, windows, appliances and other features are approximate.



Tenure: To be advised

Term: 140 year and 8 months

Service Charge: £0 per annum

Ground Rent: £ 0 Annually (subject to increase)

Council Tax Band: G

Where no figures are shown, we have been unable to ascertain the information. All figures that are shown were correct at the time of printing.

Winkworth

Knightsbridge & Chelsea | 0207 589 6616 | knightsbridge@winkworth.co.uk

for every step...

winkworth.co.uk

Winkworth wishes to inform prospective buyers and tenants that these particulars are a guide and act as information only. All our details are given in good faith and believed to be correct at the time of printing but they don't form part of an offer or contract. No Winkworth employee has authority to make or give any representation or warranty in relation to this property. All fixtures and fittings, whether fitted or not are deemed removable by the vendor unless stated otherwise and room sizes are measured between internal wall surfaces, including furnishings.