



PURCELL STREET, HOXTON, N1
£580 PER WEEK FURNISHED

FANTASTIC THREE BEDROOM MAISONETTE WITH PRIVATE GARDEN JUST OFF FASHIONABLE HOXTON STREET.

Shoreditch | 020 7749 7650 | shoreditch@winkworth.co.uk

Winkworth

Tenant Fees Apply: Details of fees for tenant referencing, tenancy agreement admin fees and renewal fees are available on the Winkworth website and the link can be found with the displayed rent for the property. Tenants should ensure they are fully conversant with these upfront fees and other costs that are involved at the outset of the tenancy before making an offer to rent and your local Winkworth office will provide written details upon request.

winkworth.co.uk

See things differently



DESCRIPTION:

A superb three bedroom maisonette, split over two levels with private garden. All bedrooms are reasonably equal for three sharers. It has a modern fitted kitchen, bright living room with patio doors to garden and bathroom with shower. The property is only 600m from Old Street tube (Northern Line) and convenient for Hoxton Station (East London Line), Hoxton Square and central Shoreditch. Furnished.

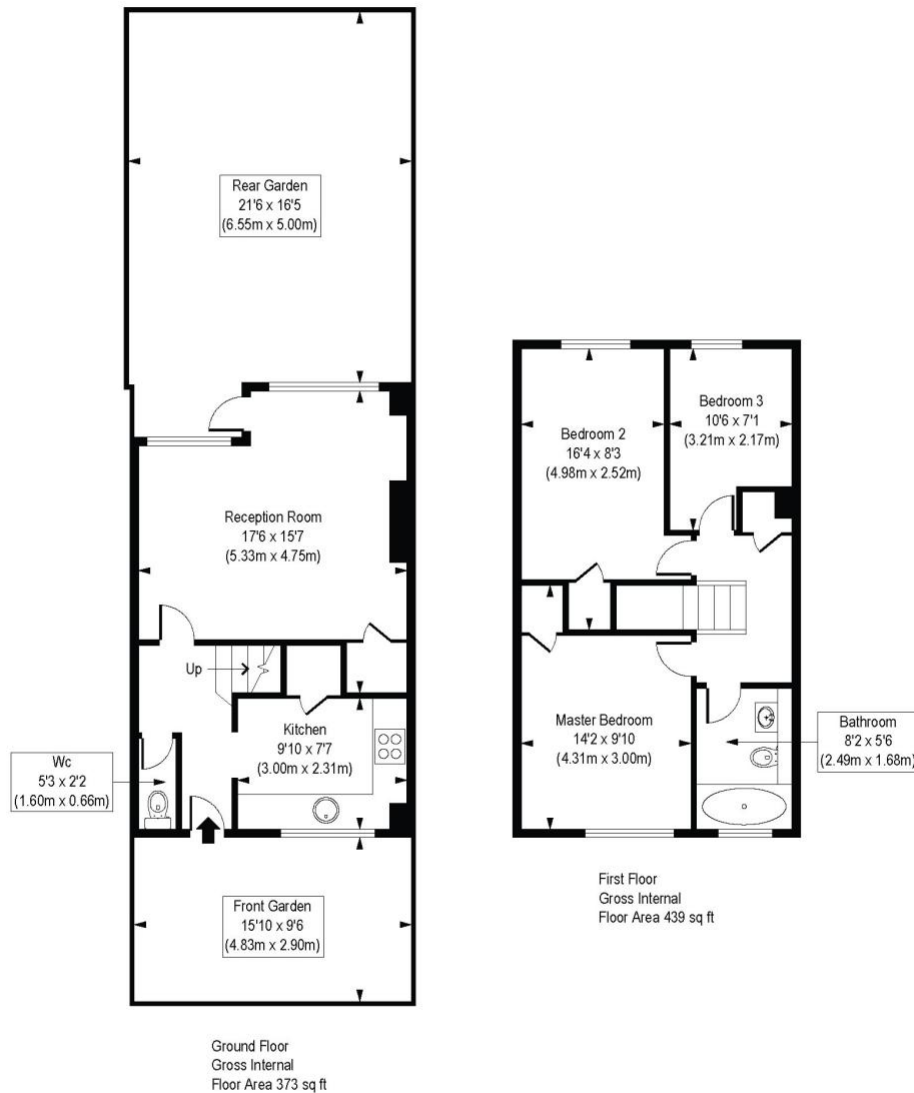
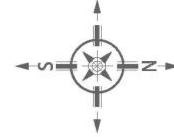
Winkworth



Winkworth

Purcell Street, N1

Approx. Gross Internal Floor Area 812 sq. ft / 75.45 sq. m



COMPLIANT WITH RICS CODE OF MEASURING PRACTICE. Floorplan is for illustrative purposes only and is not to scale. Every attempt has been made to ensure the accuracy of the floorplan shown, however all measurements, fixtures, fittings and data shown are an approximate interpretation for illustrative purposes only. Liability for errors, omissions or mis-statement through negligence or otherwise is hereby excluded.

This floorplan is for illustration purposes only and is not to scale. The position and size of doors, windows, appliances and other features are approximate.

Shoreditch | 020 7749 7650 | shoreditch@winkworth.co.uk

Winkworth

winkworth.co.uk

See things differently

Winkworth wishes to inform prospective buyers and tenants that these particulars are a guide and act as information only. All our details are given in good faith and believed to be correct at the time of printing but they don't form part of an offer or contract. No Winkworth employee has authority to make or give any representation or warranty in relation to this property. All fixtures and fittings, whether fitted or not are deemed removable by the vendor unless stated otherwise and room sizes are measured between internal wall surfaces, including furnishings.