



Winkworth

for every step...

Flagstaff Road, Berkshire, RG2 6DL

£2,000 per month *Furnished / Unfurnished*



Stunning two bedroom former show apartment at the Bankside Gardens development at Green Park Village. The ground floor apartment comprises two double bedrooms, en suite shower room, three piece bathroom, open plan living room / kitchen, storage cupboard and utility cupboard. Additional features include large private terrace overlooking the lake and a secure gated parking space. Available 6th December 2025. Unfurnished.

\*The property is available on a fully furnished basis (as per the marketing photos) at a higher rental figure.

#### KEY FEATURES

- Bankside Gardens show apartment
- Large private terrace
- Two bathrooms
- Access to the residents community hub
- Allocated undercroft parking space
- Available 6th December
- Furnished or unfurnished\*



Reading

0118 4022 300 | [reading@winkworth.co.uk](mailto:reading@winkworth.co.uk)

Winkworth

for every step...





The development benefits from Green Park train station linking Reading with Basingstoke and London. Located Just minutes from central Reading and providing easy access to the M4 at junction 11. The apartment building also has use of The Community Hub which includes concierge, gym, co-working space and cinema room (included within the rental price).







Winkworth



Winkworth



Winkworth



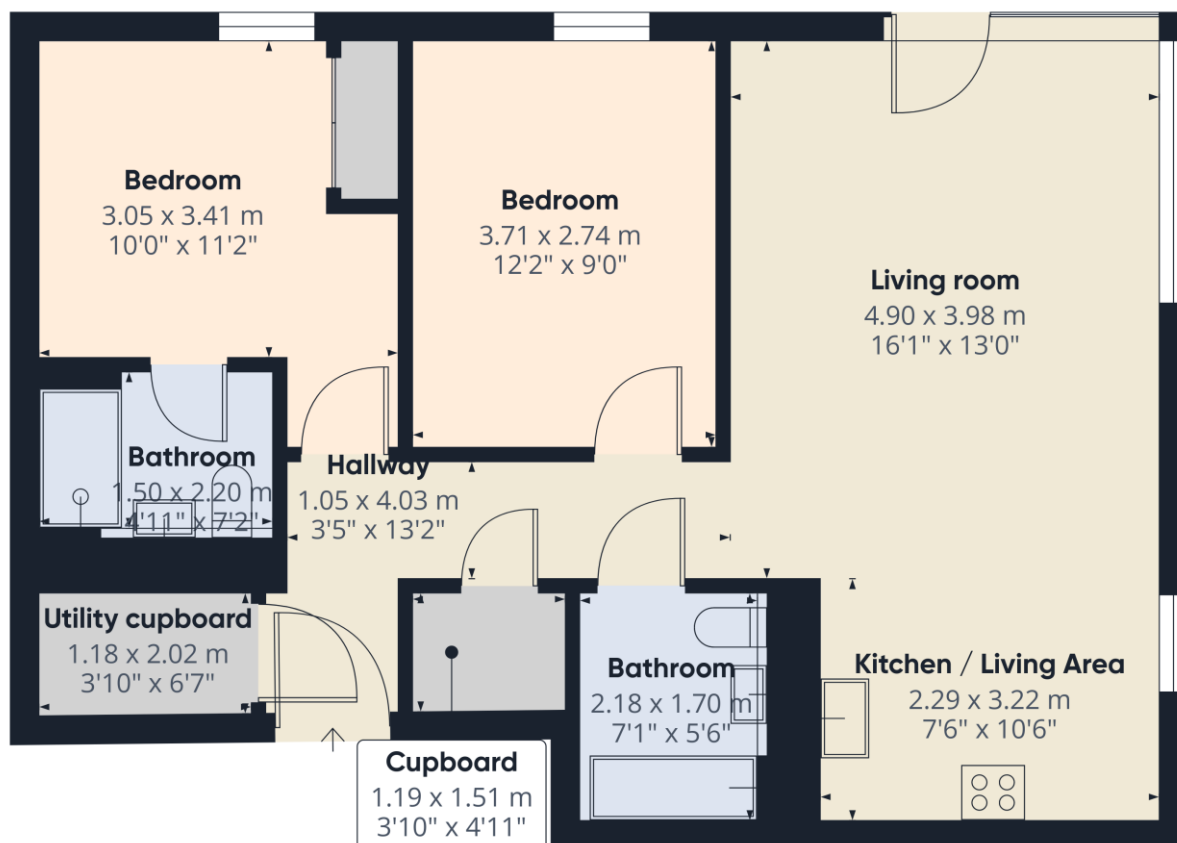
Winkworth

## MATERIAL INFO

**Deposit:** £2,307.69

**Holding Deposit:** £461.53

**Council Tax Band:** D



**Approximate total area<sup>(1)</sup>**  
66.7 m<sup>2</sup>  
718 ft<sup>2</sup>

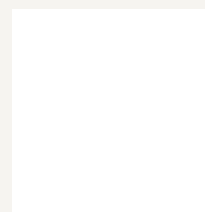
(1) Excluding balconies and terraces

Calculations reference the RICS IPMS 3C standard. Measurements are approximate and not to scale. This floor plan is intended for illustration only.

GIRAFFE360

Score	Energy rating	Current	Potential
92+	A		
81-91	B	82 B	82 B
69-80	C		
55-68	D		
39-54	E		
21-38	F		
1-20	G		

For more information, scan the QR code or visit the link below



<https://www.winkworth.co.uk/rent/property/REA250963>

Where no figures are shown, we have been unable to ascertain the information. All figures that are shown were correct at the time of printing.

## Reading

0118 4022 300 | [reading@winkworth.co.uk](mailto:reading@winkworth.co.uk)

**Winkworth**

for every step...