



St Georges Drive, SW1V

£3,250 PER MONTH

FURNISHED

#### AT A GLANCE

- Two Bedrooms
- Two Bathrooms
- Furnished
- Open Plan Kitchen Reception
- Modern
- Ground Floor

**Winkworth**

for every step...



Score	Energy rating	Current	Potential
92+	A		
81-91	B		
69-80	C	71 C	79 C
55-68	D		
39-54	E		
21-38	F		
1-20	G		

## ST GEORGES DRIVE, SW1V

£3,250 PER MONTH

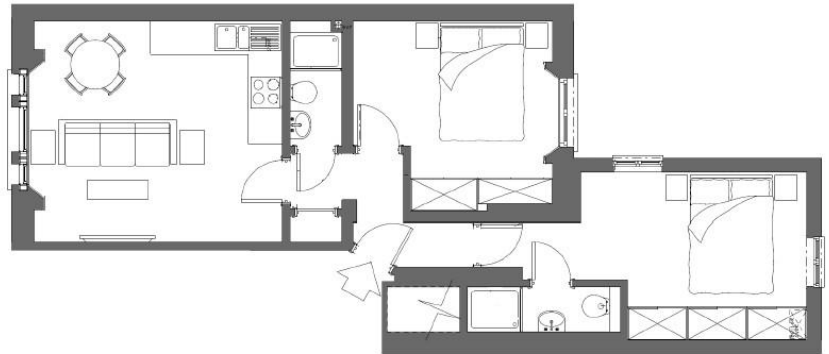
FURNISHED

A stylish two bedroom flat to rent in the heart of the Pimlico Grid. The property offers an open plan kitchen reception room, two well-proportioned double bedrooms with built in wardrobes, one of which is en-suite and two modern bathrooms. Ideally located close to local amenities and excellent transport links in Pimlico and Victoria.

### ST GEORGES DRIVE

Approx Gross Internal Area

592<sup>2</sup>ft - 54.99m<sup>2</sup>



GROUND FLOOR

Illustration For Identification Purposes Only.  
Not to Scale As Defined By RICS - Code of  
Measuring Practice



winkworth wishes to inform prospective buyers and tenants that these particulars are a guide and act as information only. All our details are given in good faith and believed to be correct at the time of printing but they don't form part of an offer or contract. No winkworth employee has authority to make or give any representation or warranty in relation to this property. All fixtures and fittings, whether fitted or not are deemed removable by the vendor unless stated otherwise and room sizes are measured between internal wall surfaces - including fireplaces.

Pimlico & Westminster | 020 7828 1786 |

pimlico@winkworth.co.uk

winkworth.co.uk/pimlico

**Winkworth**

for every step...