



**STANSTEAD ROAD, SE6**

**GUIDE PRICE \*\*£350,000 - £375,000**

### **DESCRIPTION:**

This spacious two-bedroom split-level flat on Stanstead Road offers generous living space with plenty of natural light. The property features a large living area, separate kitchen, and two well-sized bedrooms across two floors. Ideally located just 0.5 miles from Forest Hill Station and 0.7 miles from the Horniman Museum and Gardens, it provides easy access to transport links and local amenities. A great choice for those seeking comfort and convenience in a vibrant area.

**Forest Hill** | | [foresthill@winkworth.co.uk](mailto:foresthill@winkworth.co.uk)

**Winkworth**

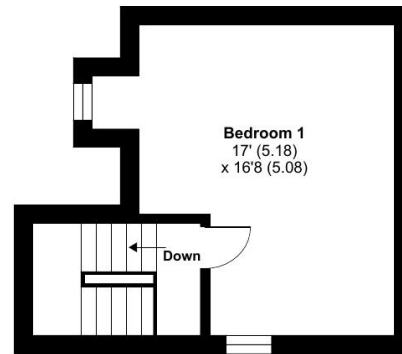
for every step...

[winkworth.co.uk](http://winkworth.co.uk)

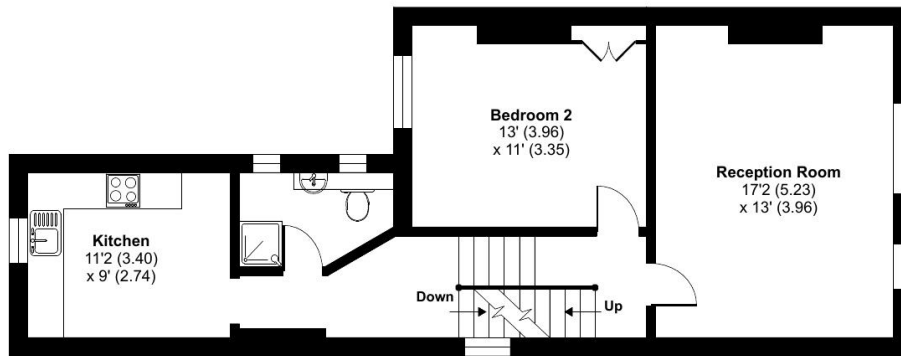
## Stanstead Road, London, SE6

Approximate Area = 974 sq ft / 90.5 sq m

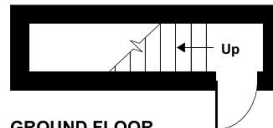
For identification only - Not to scale



SECOND FLOOR



FIRST FLOOR



GROUND FLOOR



Floor plan produced in accordance with RICS Property Measurement Standards incorporating International Property Measurement Standards (IPMS2 Residential). © nchecon 2025. Produced for Winkworth Forest Hill and New Cross. REF: 1262000

This floorplan is for illustration purposes only and is not to scale. The position and size of doors, windows, appliances and other features are approximate.

**Tenure:** Leasehold

**Term:** 142 years

**Service Charge:** £0 per annum

**Ground Rent:** £ 0 Annually

**Council Tax Band:**

Where no figures are shown, we have been unable to ascertain the information. All figures that are shown were correct at the time of printing.

Forest Hill | | foresthill@winkworth.co.uk

# Winkworth

for every step...

winkworth.co.uk

Winkworth wishes to inform prospective buyers and tenants that these particulars are a guide and act as information only. All our details are given in good faith and believed to be correct at the time of printing but they don't form part of an offer or contract. No Winkworth employee has authority to make or give any representation or warranty in relation to this property. All fixtures and fittings, whether fitted or not are deemed removable by the vendor unless stated otherwise and room sizes are measured between internal wall surfaces, including furnishings.