



STANSTEAD ROAD, LONDON, SE6 4XD

£375,000 TO BE ADVISED

This spacious and well-proportioned two-bedroom flat is located on the first and top floors of a charming building on Stanstead Road. Offering excellent living space, the flat features two generously sized bedrooms and plenty of natural light throughout.

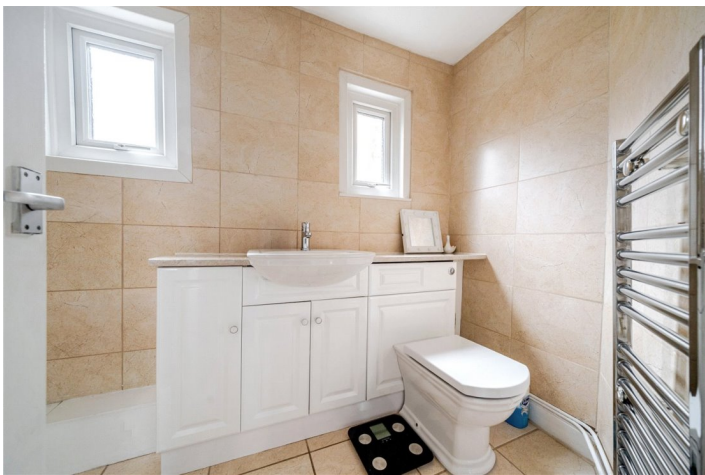
The first floor of the flat includes a large living area, providing ample room for both relaxing and entertaining. The separate kitchen is well-equipped and offers a functional space for cooking and meal preparation.

Forest Hill | | foresthill@winkworth.co.uk



DESCRIPTION:

This spacious two-bedroom split-level flat on Stanstead Road offers generous living space with plenty of natural light. The property features a large living area, separate kitchen, and two well-sized bedrooms across two floors. Ideally located just 0.5 miles from Forest Hill Station and 0.7 miles from the Horniman Museum and Gardens, it provides easy access to transport links and local amenities. A great choice for those seeking comfort and convenience in a vibrant area.

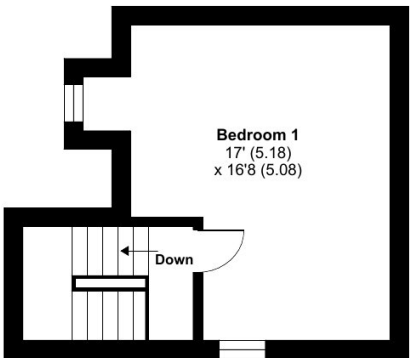




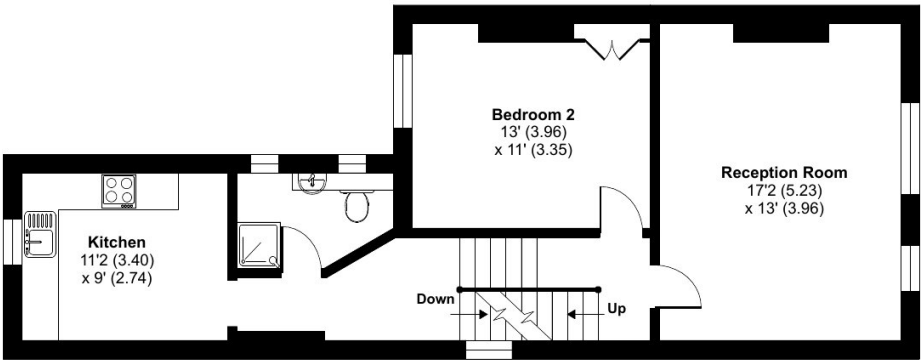
Stanstead Road, London, SE6

Approximate Area = 974 sq ft / 90.5 sq m

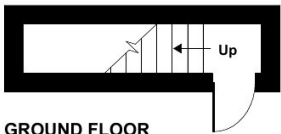
For identification only - Not to scale



SECOND FLOOR



FIRST FLOOR



GROUND FLOOR



Floor plan produced in accordance with RICS Property Measurement Standards incorporating International Property Measurement Standards (IPMS2 Residential). © nlcocom 2025. Produced for Winkworth Forest Hill and New Cross. REF: 1262000

This floorplan is for illustration purposes only and is not to scale. The position and size of doors, windows, appliances and other features are approximate.

Tenure: Leasehold