



SURREY ROAD, NUNHEAD, LONDON, SE15  
£850,000 FREEHOLD

**A CHARMING TWO DOUBLE BEDROOM  
TERRACED HOUSE, SITUATED ON A QUIET  
RESIDENTIAL STREET IN NUNHEAD.**

Dulwich | 020 8299 2722 | [dulwich@winkworth.co.uk](mailto:dulwich@winkworth.co.uk)

Tenure Freehold | Council Tax Band D – London Borough of Southwark

**Winkworth**

[winkworth.co.uk](http://winkworth.co.uk)

See things differently





## DESCRIPTION:

A charming two double bedroom house, situated on a quiet residential street in Nunhead. This wonderful, well-maintained home is offered to the market in great condition. Comprising a spacious double reception with original fireplace, wood floors and high ceilings. The property to rear boasts a spacious kitchen, complete with wooden worktops, lots of storage and leads out to a spacious, well-maintained garden to rear. The first floor comprises two spacious double bedrooms, and a large family bathroom, all presented to a high standard and boasting lots of charm and warmth. The property boasts the potential to be extended into the side return and rear, making it a very spacious three-bedroom family home. The location offers fantastic access to local amenities on Forest Hill Road, Nunhead Green, Bellenden Road and Lordship Lane. Transport links are provided via Nunhead for direct links to London Bridge, Brockley or Peckham Rye for the overground or multiple bus links situated by Peckham Rye Park. School catchments are in abundance with the popular Ivydale Road (Outstanding) situated within a short five minute walk.

## AT A GLANCE

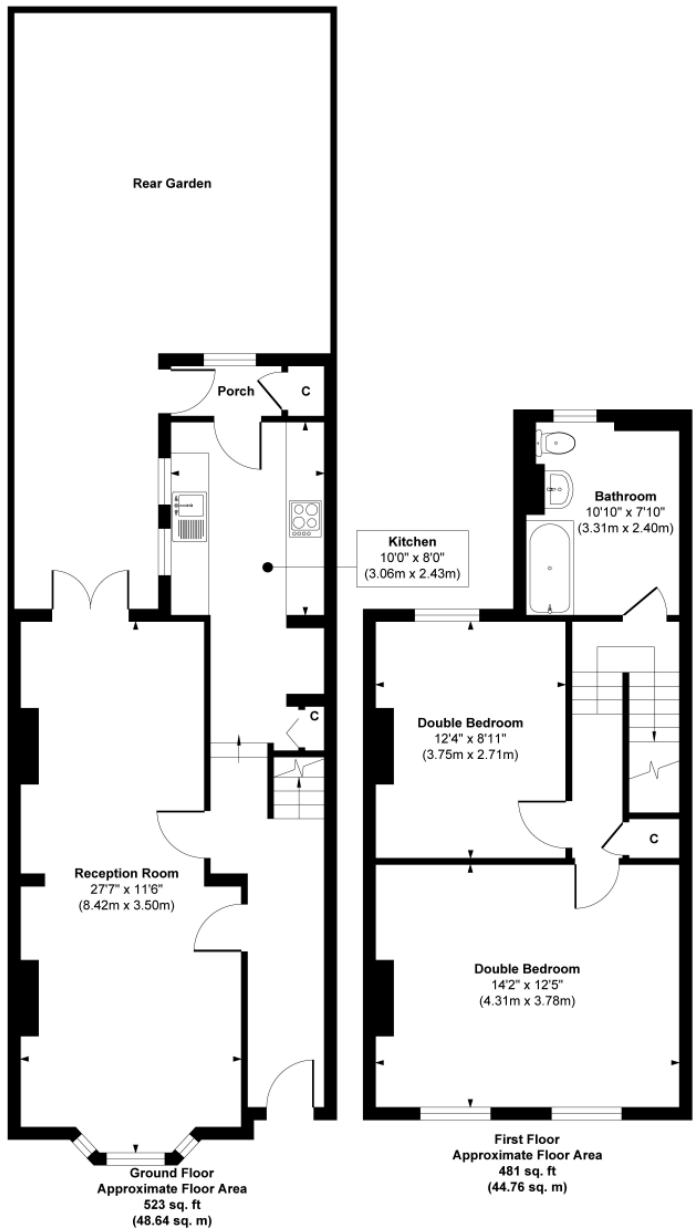
- Two Double Bedrooms
- Terraced House
- Spacious Kitchen
- Double Reception Room
- Large Family Bathroom
- Potential To Extend STPP
- Close To Peckham Rye Park
- Great Transport Links







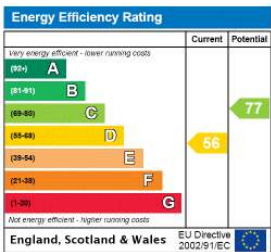
Surrey Road



**Approx. Gross Internal Floor Area 1004 sq. ft / 93.40 sq. m**

Illustration for identification purposes only, measurements are approximate, not to scale.  
Produced by Elements Property

This floorplan is for illustration purposes only and is not to scale. The position and size of doors, windows, appliances and other features are approximate.



Dulwich | 020 8299 2722 | dulwich@winkworth.co.uk



winkworth.co.uk

See things differently

Winkworth wishes to inform prospective buyers and tenants that these particulars are a guide and act as information only. All our details are given in good faith and believed to be correct at the time of printing but they don't form part of an offer or contract. No Winkworth employee has authority to make or give any representation or warranty in relation to this property. All fixtures and fittings, whether fitted or not are deemed removable by the vendor unless stated otherwise and room sizes are measured between internal wall surfaces, including furnishings.