



8 DUNSTONE COURT, ADENMORE ROAD, LONDON, SE6  
**GUIDE PRICE £300,000 LEASEHOLD**

Forest Hill | | [foresthill@winkworth.co.uk](mailto:foresthill@winkworth.co.uk)





**DESCRIPTION:**

Located in a contemporary purpose-built development, this charming one-bedroom apartment offers a bright and stylish living space ideal for professionals or couples. The property features an open-plan layout, sleek modern finishes, and a private balcony perfect for relaxing or entertaining.

Conveniently situated close to local amenities and excellent transport links, this apartment provides both comfort and connectivity - making it a perfect home.



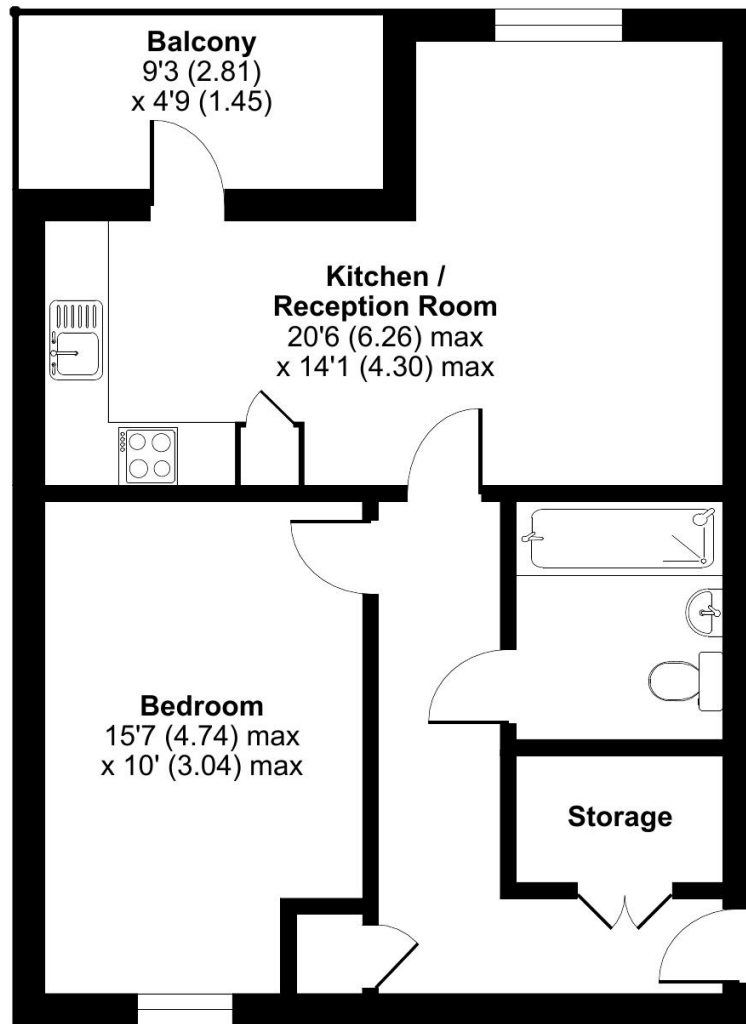




# Adenmore Road, London, SE6

Approximate Area = 573 sq ft / 53.2 sq m

For identification only - Not to scale



**SECOND FLOOR**



Floor plan produced in accordance with RICS Property Measurement Standards incorporating International Property Measurement Standards (IPMS2 Residential). © nchecon 2025. Produced for Winkworth Forest Hill and New Cross. REF: 1321573

This floorplan is for illustration purposes only and is not to scale. The position and size of doors, windows, appliances and other features are approximate.

Score	Energy rating	Current	Potential
92+	A		
81-91	B	84 B	84 B
69-80	C		
55-68	D		
39-54	E		
21-38	F		
1-20	G		

**Tenure:** Leasehold