



Cleveland Mansions, Mowll Street, London, SW9

£549,950 Leasehold

Winkworth is proud to present a beautifully finished two-bedroom flat on the first floor of a Victorian mansion block with access to a communal garden on the ever-popular Mowll Street, in Oval. EPC Rating C.

LOCATION

Oval Underground Station (Northern Line) is approximately 640 metres away. Stockwell Underground Station (Victoria & Northern Line) is around 1200 metres away. Clapham Road and Brixton Road are also well served by frequent buses into Central London.

DESCRIPTION

Enter the flat on the first floor and you are greeted by wonderful ceiling height. To your right you will find the main bedroom. A fantastic sized bedroom that is flooded with light courtesy of a beautiful bay window. There is a charming fireplace with space for storage or shelves flanking the chimney breast. The room is suitable for a king-sized bed with ample room available for freestanding furniture.

The second bedroom is adjacent, again a great size, suitable for a large double bed and plenty of room for further freestanding storage. There is another lovely fireplace nestled in the corner. Light comes through in abundance courtesy of a large window, with views of the communal gardens below.

Walking through the hallway with engineered wood flooring, you'll find the bathroom. The bathroom is beautifully tiled throughout and well equipped with a bath with overhead shower, W.C, sink with vanity mirror and heated towel rail.

Heading towards the rear of the flat, and you arrived at the open plan L-shaped reception and kitchen that is spacious and impeccably finished. Three large windows occupy the space bringing light in from all different angles. There is plenty of room for a large sofa and dining table and chairs.

The kitchen is finished with a homely, tiled splashback, wooden worktops that give you plenty of countertop workspace, and storage found both above and below. The kitchen is equipped with an electric fan-powered oven with gas hob and extractor, and space for a large fridge/freezer and dishwasher.

LOCAL AUTHORITY

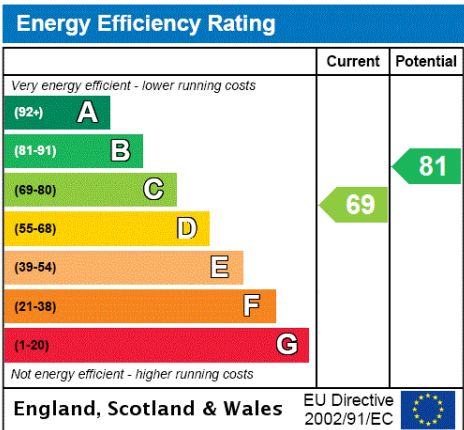
Lambeth Council, London
Council tax band C

TENURE

Leasehold - 125 years from 24 June 1991
Ground rent: £200 per annum
Service charge: circa £1,293 per annum

DIRECTIONS

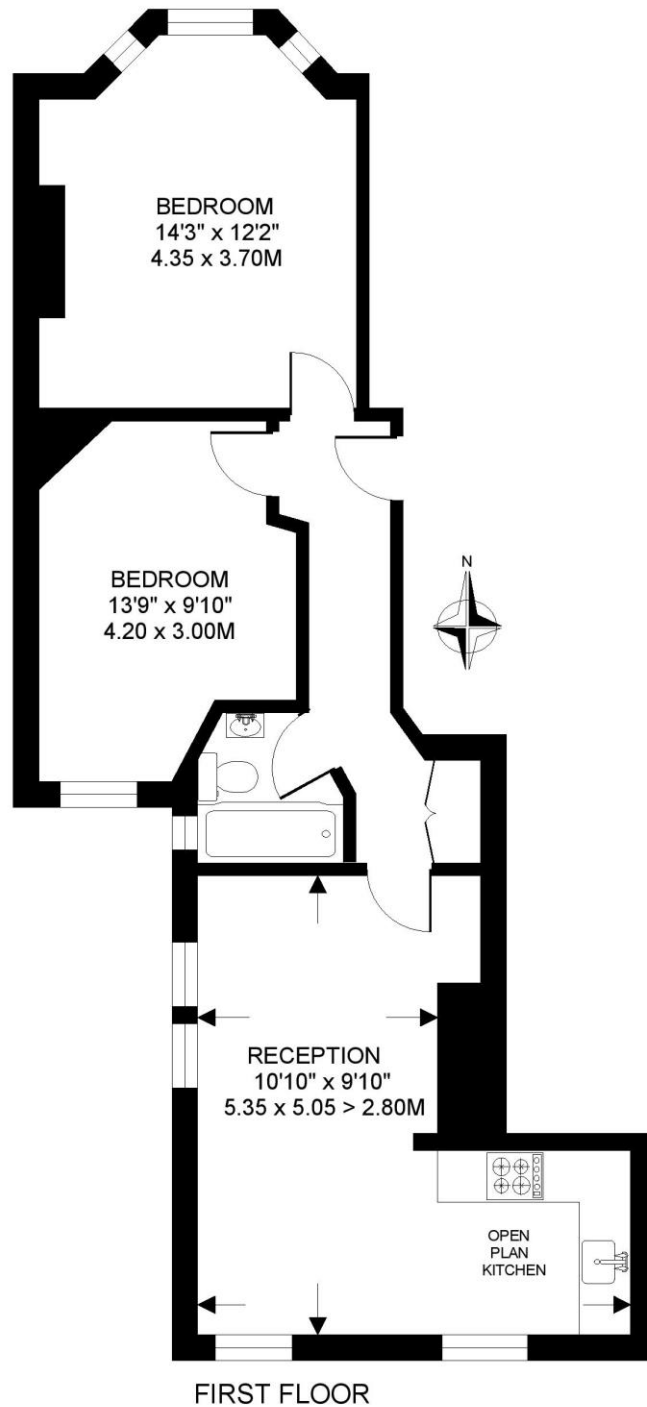
Cleveland Mansions is located on the quaint tree lined, Mowll Street situated between Clapham Road and Brixton Road. All amenities that Little Portugal and Oval have to offer, are just a short walk away.





CLEVELAND MANSIONS SW9
2 BEDROOM FLAT

Approximate gross floor area
624 SQ.FT / 58 SQ.M.



This floorplan is for illustration purposes only and is not to scale. The position and size of doors, windows, appliances and other features are approximate.

Kennington | 020 7587 0600 | kennington@winkworth.co.uk