



GROSVENOR CRESCENT, LONDON, NW9  
£625,000 FREEHOLD

## THREE BEDROOM END OF TERRACE HOUSE IN IDEAL LOCATION

Kingsbury | 020 8204 0000 | kingsbury@winkworth.co.uk

**Winkworth**

[winkworth.co.uk](http://winkworth.co.uk)

See things differently





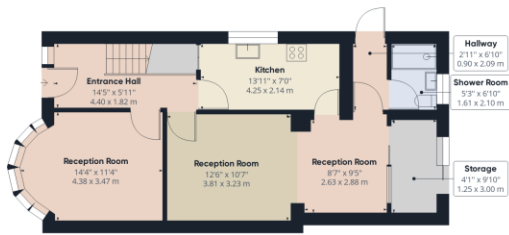
**DESCRIPTION:** Nestled in the very heart of Kingsbury, this delightful End-of-Terrace house invites you to transform it into your dream home. Featuring three sizeable bedrooms, two reception rooms, a family bathroom, and a convenient ground floor shower room, it accommodates all your needs. A rear extension provides ample scope for development, allowing you to customise your living space, and the property's blank canvas eagerly awaits your modernisation and renovation ideas. Step into the garden, approximately 30 feet in length, where you can enjoy the outdoors in privacy. With amenities, schools, and excellent transport links just moments away, and Kingsbury Station a mere 8-minute stroll, this property promises both convenience and potential. Unleash your creativity and unlock the charm of this Kingsbury gem—your dream home is within reach. Contact us today to arrange a viewing and seize this unique opportunity in Kingsbury's coveted location.



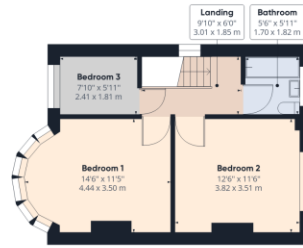




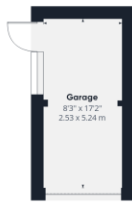
**Winkworth**



Ground Floor Building 1



Floor 1 Building 1



Ground Floor Building 2

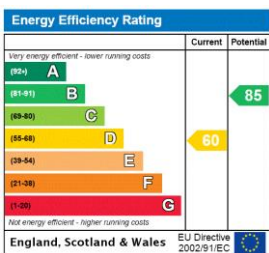
**Approximate total area<sup>(1)</sup>**  
 1240.23 ft<sup>2</sup>  
 115.22 m<sup>2</sup>

(1) Excluding balconies and terraces

While every attempt has been made to ensure accuracy, all measurements are approximate, not to scale. This floor plan is for illustrative purposes only.

GIRAFFE360

This floorplan is for illustration purposes only and is not to scale. The position and size of doors, windows, appliances and other features are approximate.



Kingsbury | 020 8204 0000 | kingsbury@winkworth.co.uk

