



**LARIAT APARTMENTS, GREENWICH, LONDON, SE10
OFFERS IN EXCESS OF £400,000 LEASEHOLD**

**A SUPERB AND EXTREMELY BRIGHT ONE BEDROOM,
7TH FLOOR, APARTMENT THAT FEATURES A LARGE
BALCONY AND MEASURES CIRCA 570 SQ.FT.**

Greenwich | 02030533033 | greenwich@winkworth.co.uk

Winkworth

winkworth.co.uk

See things differently



DESCRIPTION:

A superb and extremely bright one bedroom, 7th floor, apartment that features a large balcony and measures circa 570 sq.ft.

In perfect condition the property briefly comprises a large open plan kitchen diner, with hard wood flooring, and leading onto a spacious, covered, balcony. The double bedroom has a built in double wardrobe. There is also a lovely, well-presented bathroom. Added features include underfloor heating, ample storage and a 24 hour concierge on site. There is also a well-equipped communal gymnasium and beautiful communal gardens

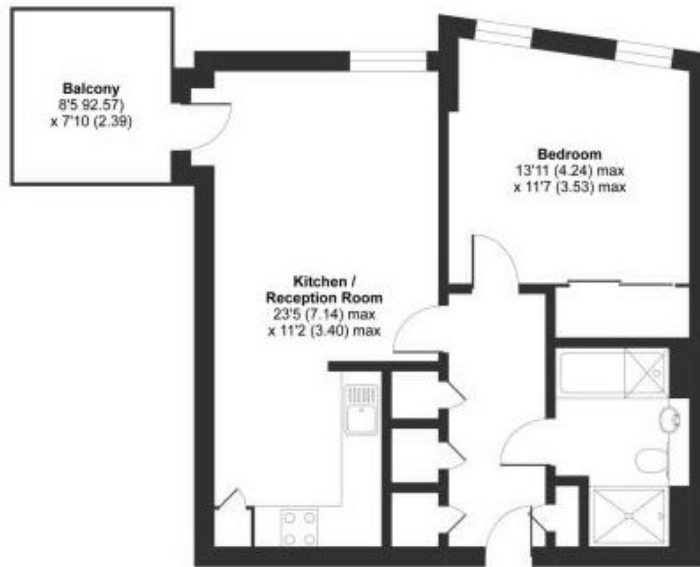
Enderby Wharf is a popular riverside development found at the foot of the North Greenwich Peninsula, moments from the river walkway. This means it is perfectly located for easy reach to the O2 arena, with Jubilee Line extension, but also the town centre, with its fine array of shops and restaurants, along with mainline rail, DLR and of course the Royal Park.

AT A GLANCE

- stunning apartment
- one bedroom
- 7th floor with lift
- large balcony
- excellent condition
- riverside development
- concierge on site
- communal gymnasium
- communal gardens
- close to O2 and town centre







SEVENTH FLOOR

Cable Walk, London, SE10

Approximate Area = 570 sq ft / 53 sq m
For identification only - Not to scale

This floorplan is for illustration purposes only and is not to scale. The position and size of doors, windows, appliances and other features are approximate.

Energy Efficiency Rating	
	Current Potential
Very energy efficient - lower running costs	
(92+) A	
(81-91) B	85 85
(69-80) C	
(55-68) D	
(39-54) E	
(21-38) F	
(1-20) G	
Not energy efficient - higher running costs	
England, Scotland & Wales	EU Directive 2002/91/EC

Greenwich | 02030533033 | greenwich@winkworth.co.uk



winkworth.co.uk

See things differently

Winkworth wishes to inform prospective buyers and tenants that these particulars are a guide and act as information only. All our details are given in good faith and believed to be correct at the time of printing but they don't form part of an offer or contract. No Winkworth employee has authority to make or give any representation or warranty in relation to this property. All fixtures and fittings, whether fitted or not are deemed removable by the vendor unless stated otherwise and room sizes are measured between internal wall surfaces, including furnishings.