



GRANVILLE ROAD, SW18
OFFERS OVER £400,000 LEASEHOLD

Winkworth



GRANVILLE ROAD, SW18

A well-proportioned 678sqft, two-bedroom flat situated on the upper floor of a purpose-built development in Wandsworth, offering bright and practical living space in a highly convenient location.

The property comprises two bedrooms, a spacious reception room, a modern bathroom, and a well-equipped kitchen. The flat is presented in fair decorative order.

Further benefits include access to a communal garden, residents' parking, and secure entry.

Located within walking distance of Southfields Underground Station (District Line) and well-served by local bus routes, the home enjoys excellent transport links into Central London.

Residents can enjoy all the amenities of Southfields Village, including independent cafés, shops, and restaurants.

It is also within close proximity to Southside Shopping Centre, which features high street retailers, a large Sainsbury's, cinema, gyms, restaurants, and cafés. King George's Park is just moments away, offering tennis courts, open green spaces, and a leisure centre—perfect for outdoor recreation and active lifestyles.

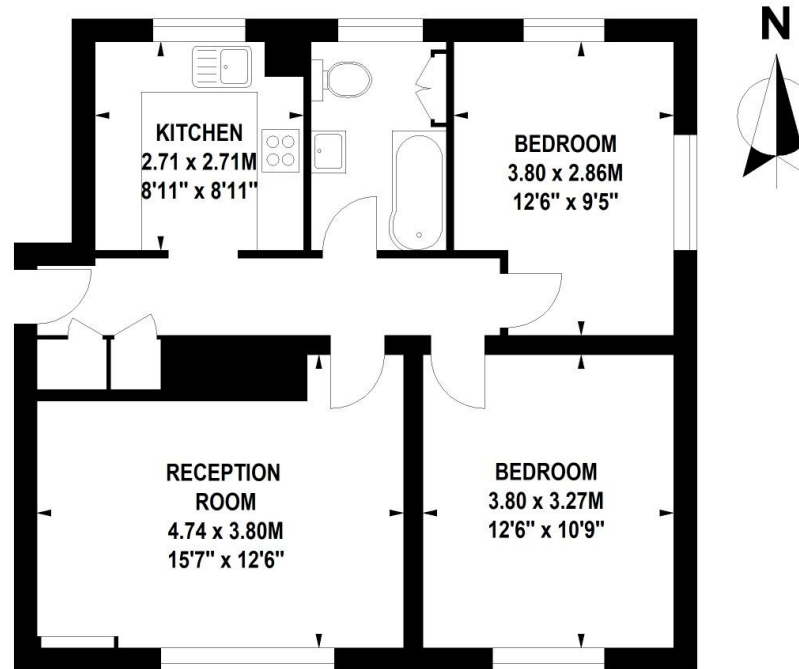
With its generous layout and sought-after location, this home presents a rare opportunity to secure a property in the heart of South West London.





Granville Road, SW18

Approximate Gross Internal Area 63 sq.m / 678 sq. ft



Second Floor

Floor Plan produced for WINKWORTH by Mays Floorplans © . Tel 020 3397 4594

Illustration for identification purposes only, not to scale

All measurements are maximum, and include wardrobes and window bays where applicable

Southfields | 020 8877 1000 | southfields@winkworth.co.uk

winkworth.co.uk

Winkworth wishes to inform prospective buyers and tenants that these particulars are a guide and act as information only. All our details are given in good faith and believed to be correct at the time of printing but they don't form part of an offer or contract. No Winkworth employee has authority to make or give any representation or warranty in relation to this property. All fixtures and fittings, whether fitted or not are deemed removable by the vendor unless stated otherwise and room sizes are measured between internal wall surfaces, including furnishings.

Winkworth