

## ALEXANDER STREET, W2

**£750 PER WEEK (£3,250 PCM) Furnished**

**A STUNNING TWO DOUBLE BEDROOM FLAT ON THE RAISED GROUND FLOOR ON THIS BEAUTIFUL TREE-LINED STREET.**

2 Bedrooms, 1 Reception Room, 1 Bathroom, Flat/Apartment, Ground Floor, Period, Furnished, 618 Approx Sq Ft Energy Efficiency Rating: 74

**Winkworth**



## DESCRIPTION:

A stunning contemporary two double bedroom flat on the raised ground floor of this period conversion located on this beautiful tree lined street. The flat benefits from wood floors throughout, fantastic high ceilings, open plan kitchen, two double bedrooms and an immaculate fully tiled bathroom. The flat is available furnished and viewings are highly recommended.

## LOCATION:

Alexander Street is an attractive residential street, well located in this peaceful and sought after Notting Hill spot, to the south of Westbourne Park Road, a short walk from the many shopping and dining amenities of Westbourne Grove and the transport connections of Queensway.

## LOCAL AUTHORITY AND COUNCIL TAX BAND:

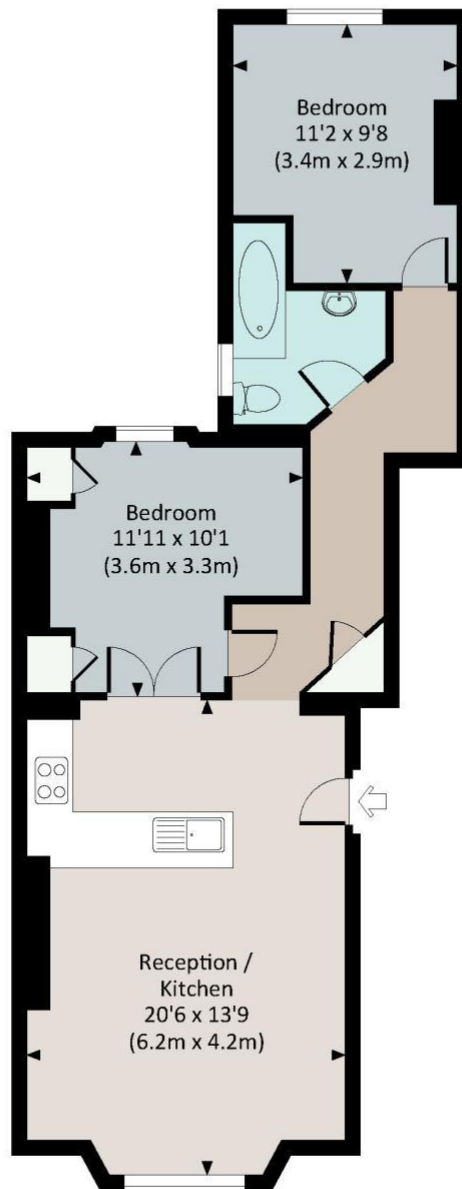
City Of Westminster - D





## ALEXANDER STREET, W2

Approx. gross internal area  
618 Sq.Ft. / 57.4 Sq.M.

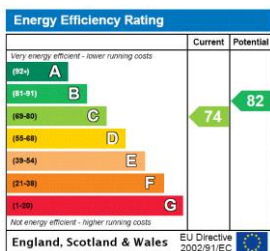


RAISED GROUND FLOOR



All measurements have been made in accordance with RICS Code of Measuring Practice which are approximate only and only for illustrative purposes. For the avoidance of doubt, Dowling Jones Design shall not be liable for any reliance on these measurements. © 2015 www.dowlingjones.com 020 7610 9939

This floorplan is for illustration purposes only and is not to scale. The position and size of doors, windows, appliances and other features are approximate.



Notting Hill | 0207 727 3227 | nottinghill@winkworth.co.uk

**Winkworth**

[winkworth.co.uk](http://winkworth.co.uk)

for every step...

winkworth wishes to inform prospective buyers and tenants that these particulars are a guide and act as information only. All our details are given in good faith and believed to be correct at the time of printing but they don't form part of an offer or contract. No winkworth employee has authority to make or give any representation or warranty in relation to this property. All fixtures and fittings, whether fitted or not are deemed removable by the vendor unless stated otherwise and room sizes are measured between internal wall surfaces, including furnishings.