



WOODLANDS CLOSE, HERTFORDSHIRE, WD6
GUIDE PRICE £650,000 FREEHOLD

AN EXTENDED THREE DOUBLE BEDROOM SEMI DETACHED HOUSE IN SOUTH BOREHAMWOOD

Borehamwood | 020 8953 8899 | borehamwood@winkworth.co.uk



DESCRIPTION:

Located in a highly desirable and sought after cul de sac on the South side of Borehamwood, close to several well regarded schools including Yavneh College and Primary school, is this extended three double bedroom family house

Offering in excess of 1100 square feet of well proportioned accommodation the property is well presented throughout and is complimented by a large mature Southerly facing rear garden and off street parking for several cars to the front.

AT A GLANCE

- 3 Bedrooms
- South Borehamwood
- Desirable Cul de Sac
- Close To Yavneh, Monksmead and Summerswood Schools
- 1110 Square Feet
- Approx. 130' Southerly Rear Garden
- Guest Cloakroom





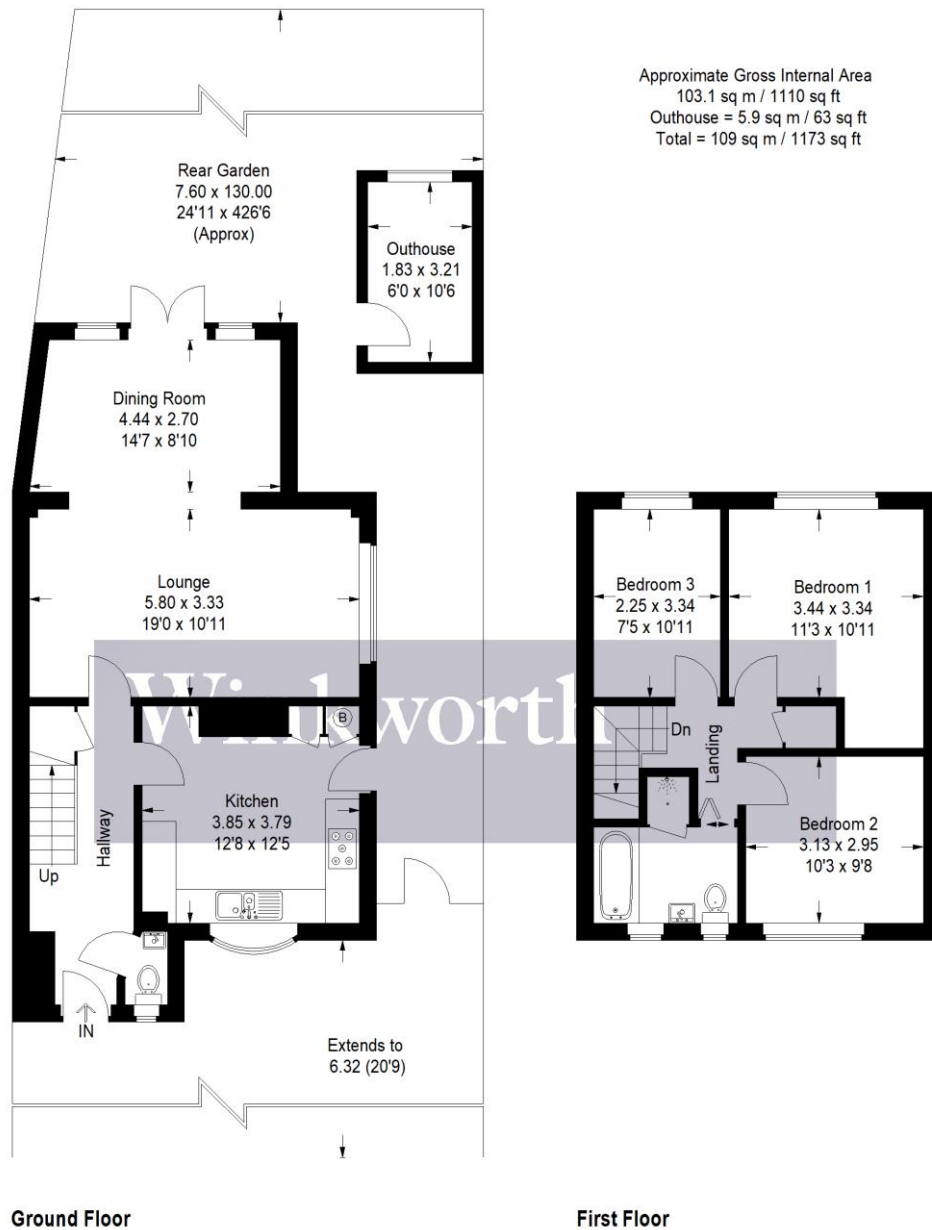
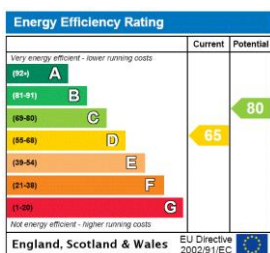


Illustration for identification purposes only, measurements are approximate, not to scale. Winkworth © 2021 (ID788853)

This floorplan is for illustration purposes only and is not to scale. The position and size of doors, windows, appliances and other features are approximate.



Borehamwood | 020 8953 8899 | borehamwood@winkworth.co.uk