



48 Southern Road

Southbourne, BH6 3SS

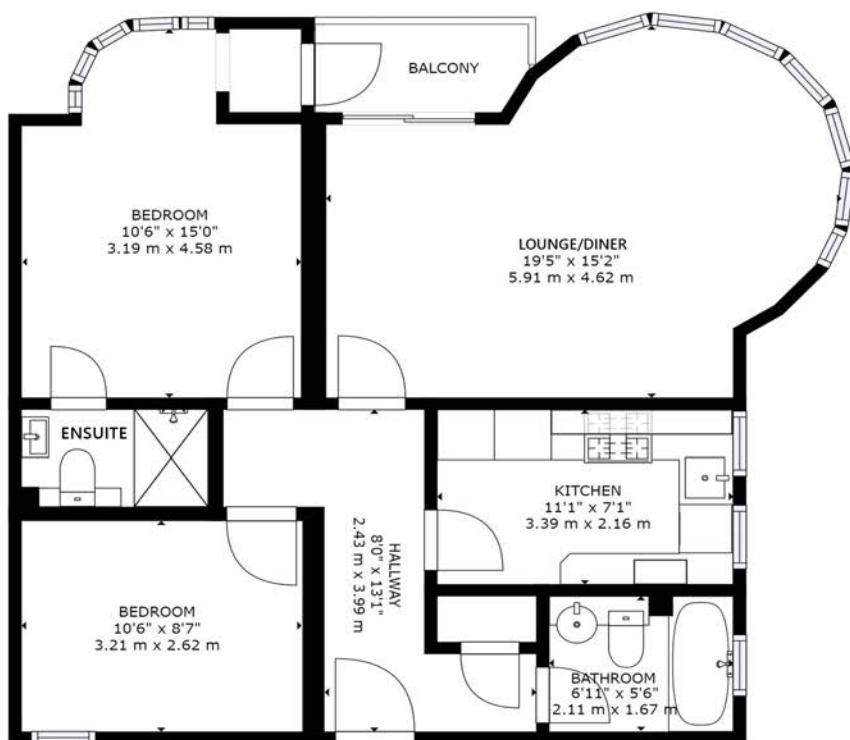
Asking Price £600,000 - £630,000

Winkworth



A spacious two bedroom, top floor apartment with stunning sea views, directly opposite the cliff tops. The apartment benefits from a modern kitchen and bathroom, two double bedrooms one with an en-suite shower room and a balcony with stunning sea views and allocated parking.

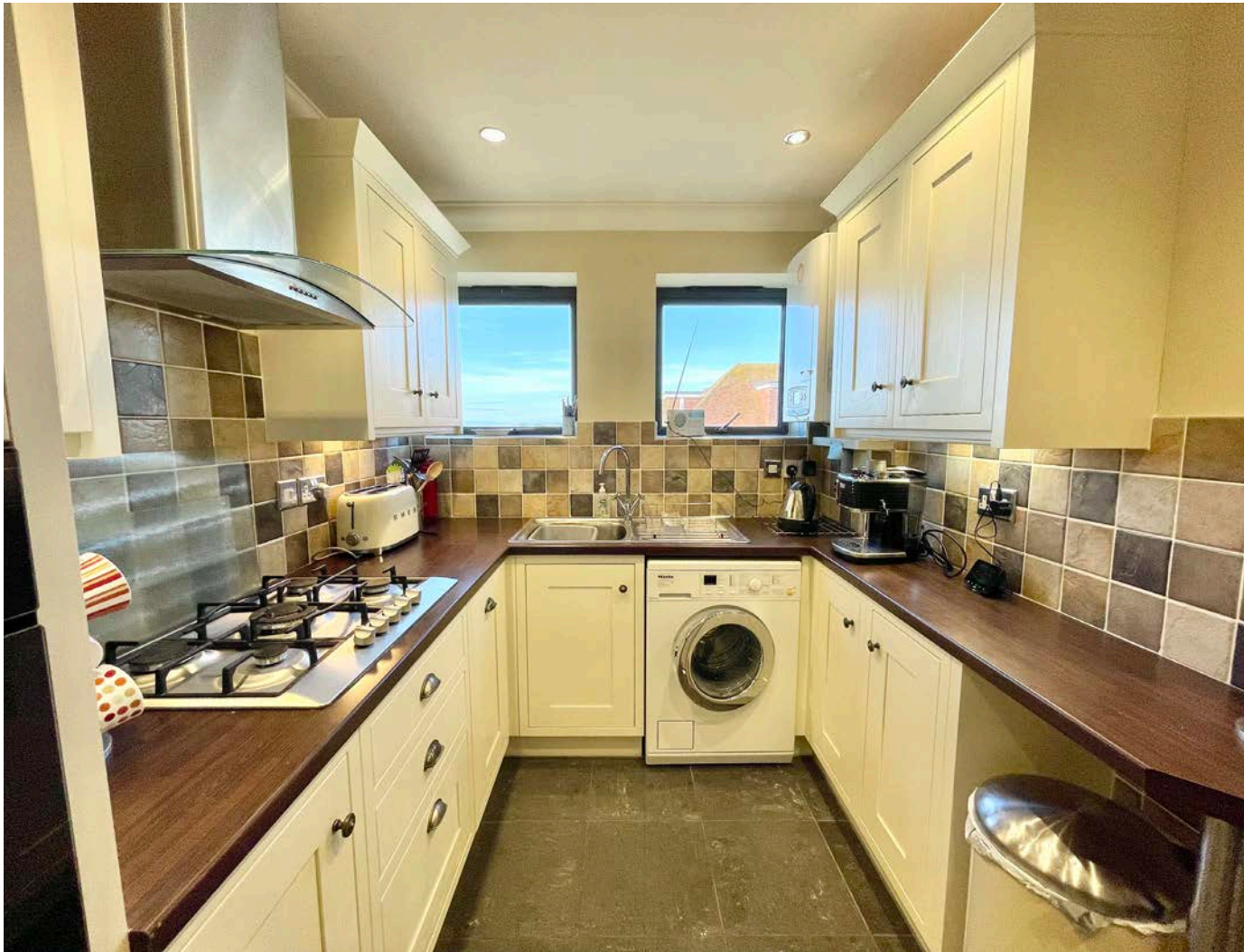
Two Bedrooms | Modern Kitchen | Bright and Spacious Lounge | En-suite | Balcony | Bathroom | Stunning Sea Views | No Onward Chain | Allocated Parking | Lift To All Floors | Share Of Freehold | Pets: by consent | Maintenance: £2150pa | EPC: C



FLOOR 1

GROSS INTERNAL AREA
FLOOR 1: 752 sq. ft, 70 m², EXCLUDED AREAS:
BALCONY: 28 sq. ft, 3 m²
TOTAL: 752 sq. ft, 70 m²
SIZES AND DIMENSIONS ARE APPROXIMATE, ACTUAL MAY VARY.





LOCATION

Southbourne is located on the south-east suburb of Bournemouth and neighbours both Christchurch and Boscombe. The area enjoys its own shopping experience with the main high street offering a varied range of shops, restaurants and bars. Southbourne itself enjoys the award-winning blue flag sandy beaches with a level walk promenade extending from Hengistbury Head through to Sandbanks.

A local bus service provides links to Bournemouth and Poole with a different shopping experience together with a number of restaurants and bars providing a vibrant nightlife. A local train station provides direct links to Southampton, Southampton Airport and London which is approximately 100 miles away.

Winkworth Southbourne

29a Southbourne Grove, Dorset, BH6 3QT
01202 434365 | southbourne@winkworth.co.uk
winkworth.co.uk/southbourne

Winkworth