



1A Julian Terrace  
Southbourne BH5  
Offers In Excess Of - £190,000

Winkworth







Share of Freehold - OIEO - £190,000

01202 434365 | southbourne@winkworth.co.uk

## **A superbly located two double bed, two bathroom first floor apartment, in the heart of Southbourne. An ideal investment property.**

Julian Terrace is superbly located for Southbourne High-street and its wonderful array of shops, cafes, and restaurants are just a short walk to Southbourne's golden sandy beaches. The property itself sits above a popular row of shops and amenities

- cosmopolitan coastal living is right on your doorstep.

This unique property has great rental potential or would make for an ideal second home by the sea.

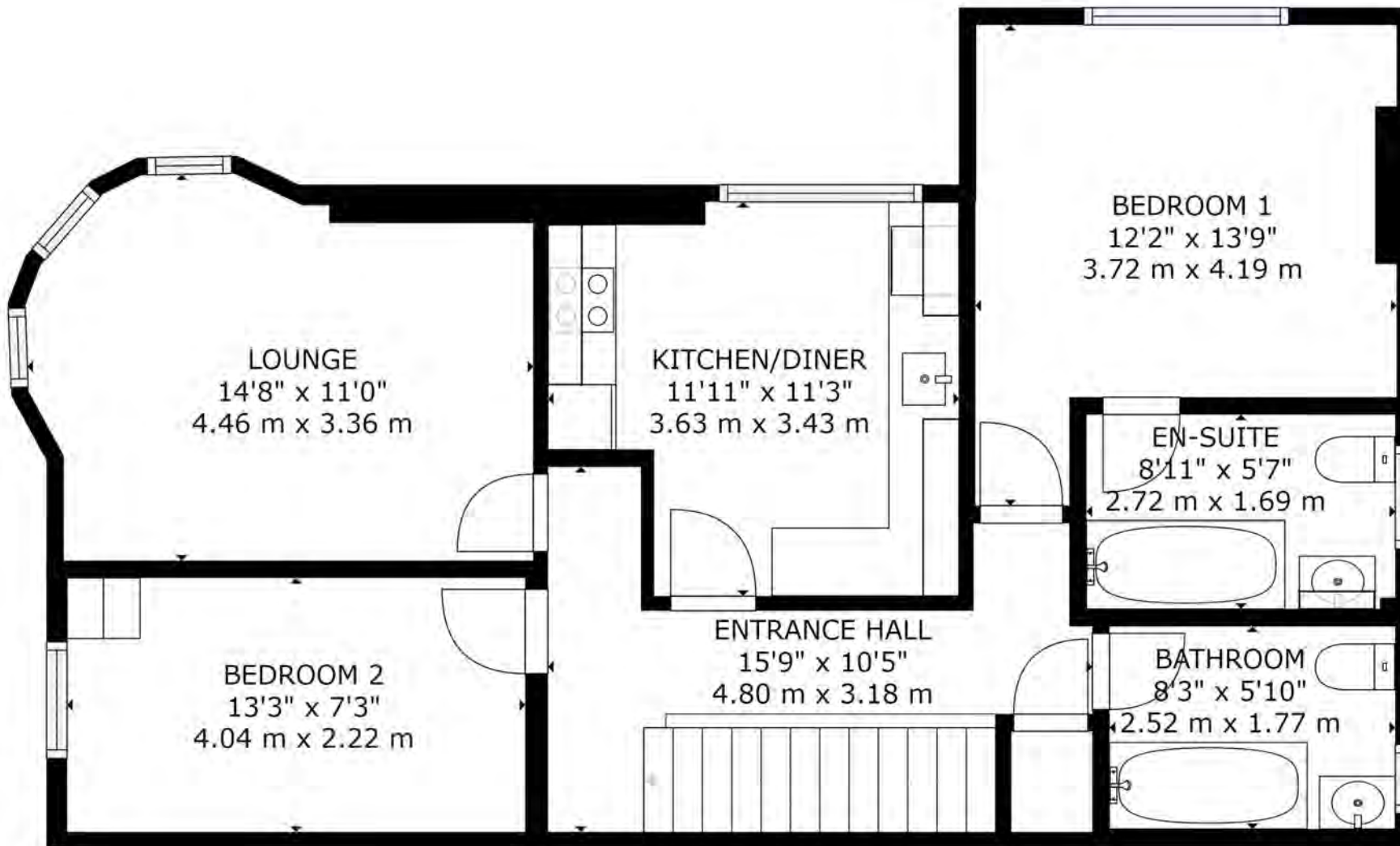
- Two Double Bedrooms
- Two Full Bathrooms
- Large Kitchen/Diner
- Spacious Lounge
- High Street Location
- Private Entrance

Pets By Consent | No Short Term Lets / Holiday Lets | Maintenance Fees: £50 PCM | Lease: 92 years

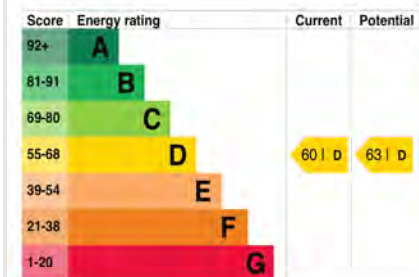
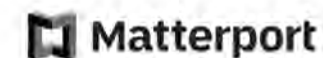
Southbourne is located on the south-east suburb of Bournemouth and neighbours both Christchurch and Boscombe. The area enjoys its own shopping experience with the main high street offering a varied range of shops, restaurants and bars. Southbourne itself enjoys the award-winning blue flag sandy beaches with a level walk promenade extending from Hengistbury Head through to Sandbanks. A local train station provides direct links to Southampton, Southampton Airport and London which is approximately 100 miles away.

Bournemouth International airport (6 miles) offers a varied schedule of flights to a number of European destinations.





GROSS INTERNAL AREA  
FLOOR 1: 761 sq ft, 71 m<sup>2</sup>  
TOTAL: 761 sq ft, 71 m<sup>2</sup>



1A JULIAN TERRACE  
128-134 SEABOURNE  
ROAD  
BOURNEMOUTH  
BH5 2JE

Energy rating

**D**

Valid until  
**13 December 2030**

Certificate number  
**5290-3341-0522-2090-**

**3203**

**Winkworth Southbourne**

29 Southbourne Grove, BH6 3QT  
01202 434365 | southbourne@winkworth.co.uk

[winkworth.co.uk/southbourne](https://www.winkworth.co.uk/southbourne)

**Winkworth**