



RUTLAND GATE, LONDON, SW7
£1,400,000 SHARE OF FREEHOLD

DESCRIPTION:

A superbly positioned lower ground floor conversion flat in one of Knightsbridge's finest garden squares. The main flat is wonderfully proportioned, with high ceilings and a wealth of fitted storage. Of particular interest is the large reception room with feature fireplace, dining area and open-plan kitchen. The rear area of the apartment has the unusual benefit of having direct access to the private Mews, located at the back of the building at ground floor level.

Knightsbridge & Chelsea | 0207 589 6616 | knightsbridge@winkworth.co.uk



for every step...

Rutland Gate, SW7
 Approximate Gross Internal Area
 72.17 sq m / 777 sq ft

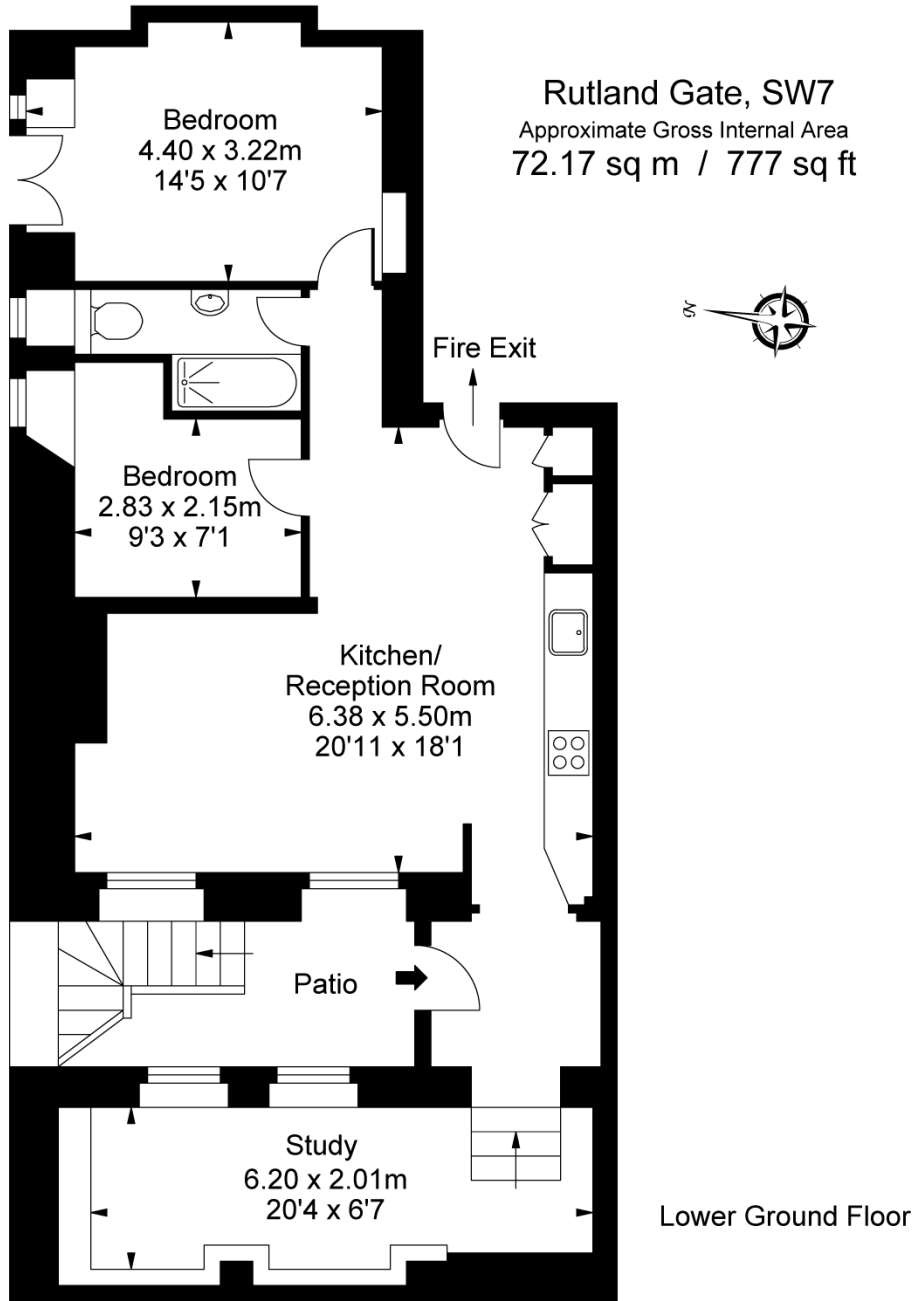
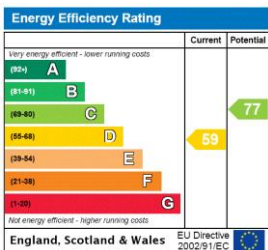


ILLUSTRATION FOR IDENTIFICATION PURPOSES ONLY
 ALL MEASUREMENTS ARE MAXIMUM, AND INCLUDE WINDOW BAYS AND WARDROBES WHERE APPLICABLE
 THIS PLAN MUST NOT BE REPRODUCED BY ANY OTHER PERSON WITHOUT PERMISSION

This floorplan is for illustration purposes only and is not to scale. The position and size of doors, windows, appliances and other features are approximate.



Tenure: Share of Freehold
Term: Expires - 25/12/2996
Service Charge: £4,035 per annum
Ground Rent: Peppercorn
Council Tax Band: F

Where no figures are shown, we have been unable to ascertain the information. All figures that are shown were correct at the time of printing.

Knightsbridge & Chelsea | 0207 589 6616 | knightsbridge@winkworth.co.uk



for every step...

winkworth.co.uk

Winkworth wishes to inform prospective buyers and tenants that these particulars are a guide and act as information only. All our details are given in good faith and believed to be correct at the time of printing but they don't form part of an offer or contract. No Winkworth employee has authority to make or give any representation or warranty in relation to this property. All fixtures and fittings, whether fitted or not are deemed removable by the vendor unless stated otherwise and room sizes are measured between internal wall surfaces, including furnishings.