



CHURCHILL GARDENS, SW1V

£499,950

LEASEHOLD

At a glance...

- Two Bedrooms
- Balcony
- Green Outlook
- Service Charge Includes Heating and Hot Water
- 2nd Floor with Lift

Winkworth

for every step...



Score	Energy rating	Current	Potential
92+	A		
81-91	B		
69-80	C	75 C	75 C
55-68	D		
39-54	E		
21-38	F		
1-20	G		

CHURCHILL GARDENS, SW1V

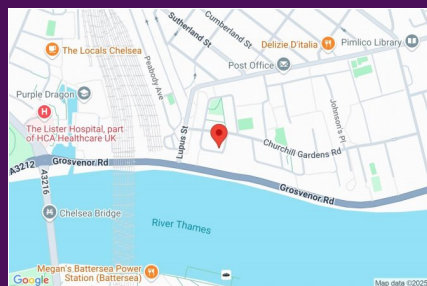
£499,950

LEASEHOLD

Situated on the 2nd floor (with lift) of this well-maintained building this flat covers some 703 square feet and is presented in excellent condition.

Briefly comprising a lovely balcony with a green outlook, two great bedrooms, separate kitchen and large reception room.

With an extended lease plus heating and hot water included in the service charges this flat would make an excellent London base or perfect central London home.

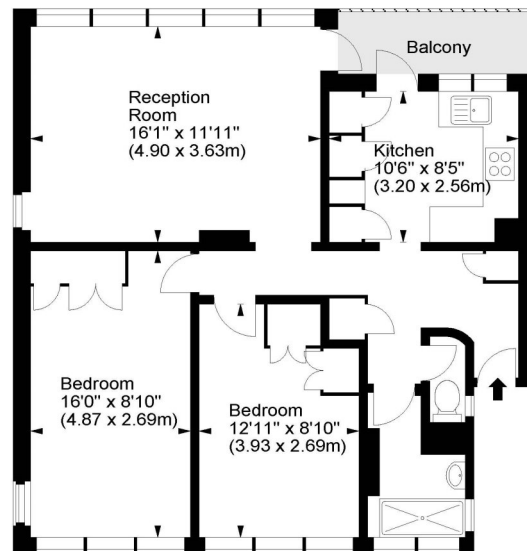


winkworth wishes to inform prospective buyers and tenants that these particulars are a guide and act as information only. All our details are given in good faith and believed to be correct at the time of printing but they don't form part of an offer or contract. No winkworth employee has authority to make or give any representation or warranty in relation to this property. All fixtures and fittings, whether fitted or not are deemed removable by the vendor unless stated otherwise and room sizes are measured between internal wall surfaces - including fire-chimneys.

Sheraton House, Churchill Gardens, SW1



Approx. Gross Internal Area = 703 sq ft / 65.31 sq m



Second Floor

For illustration purposes only. Not to scale.
All measurements are taken and shown at floor level.
www.r3photography.co.uk © Photography / Floor Plans / Lease Plans / EPCs



Pimlico & Westminster

020 7828 1786

pimlico@winkworth.co.uk

winkworth.co.uk/pimlico-westminster

Winkworth

for every step...